



# 2012-2013 Fact Book





## Preface

---

*“If we could first know where we are and where we are tending, we could better judge what to do and how to do it.”*

*– Abraham Lincoln*

The Office of Institutional Research and Planning is responsible for consistent, accurate, and timely official reporting of Clayton State institutional information; using research and analysis in support of institutional management, assessment and planning; to facilitate decision-making and institutional improvement.

The 2012-2013 FACT BOOK documents the characteristics of Clayton State University and the factors that cause change in these characteristics in order to inform strategic and long-range planning efforts.

Every effort has been made to ensure that the data contained in this document are accurate and easy to use. Prior to use of the data in policy development and/or analysis, you may wish to contact Jillian Jones or me to ensure that you receive any post-publication changes.

Narem Reddy, Ph.D.  
Director of Institutional Research  
Clayton State University  
215 University Center  
2000 Clayton State Boulevard  
Morrow, GA 30260  
678-466-4100

# Table of Contents

---

Preface.....	i
<b><i>Our University.....</i></b>	<b>4</b>
University History.....	5
Mission of the University.....	7
Strategic Plan.....	8
Organization Charts.....	9
Presidents Cabinet.....	10
Provost Level Organization Charts.....	11
Administrators & Deans.....	11
Other Administrators.....	12
Enrollment Management & Academic Success.....	13
Extended Programs.....	14
Library.....	15
Undergraduate Academics.....	16
Accreditations and Approvals.....	20
Degrees and Majors Authorized.....	21
Fall Enrollment History and Academic Highlights.....	23
Year In Review.....	24
Legends/Mythology.....	28
<b><i>Our Students.....</i></b>	<b>30</b>
Five Year Enrollment at Clayton State University.....	31
Fall Semesters.....	31
Spring Semesters.....	32
Summer Semesters.....	33
Fall Semester Full-Time Equivalency.....	34
Spring Semester Full-Time Equivalency.....	35
Summer Semester Full-Time Equivalency.....	36
Enrollment by Student Status.....	37
Fall Semesters.....	37
Spring Semesters.....	38
Summer Semesters.....	39
Fall Enrollment by Ethnic Group.....	40
Enrollment by Gender and College.....	41
Enrollment by Age.....	42
Enrollment by Full-Time/Part-Time Status.....	43
Student Course Loads.....	44
Student Credit Hours.....	45
Undergraduate Credit Hours by Department.....	45
Graduate Credit Hours by Program.....	47
New Student Enrollment.....	48
By Semester and Term.....	48
Fall Semesters.....	49
Spring Semesters.....	50
Summer Semesters.....	51

## Table of Contents *(continued)*

---

First-Time Full-Time Freshmen.....	52
Demographics.....	52
Test Scores and High School GPAs.....	53
One Year Retention Rates.....	54
Six Year Bachelors Degree Graduation Rates.....	55
Fall Enrollment by Georgia County.....	56
Fall 2012 Enrollment by State.....	57
Fall Enrollment by Country of Origin.....	58
<b><i>Our Faculty.....</i></b>	<b><i>59</i></b>
2011–12 Full-Time Instructional Faculty.....	60
Fall 2012 Full-Time Instructional Faculty.....	67
By College.....	67
By Rank.....	68
By Tenure Status.....	69
By Highest Degree.....	70
Graduate Faculty.....	71
Instructional Faculty Committee Memberships.....	73
<b><i>Our Finances.....</i></b>	<b><i>75</i></b>
Tuition Revenue.....	76
Grants & Contracts by Type.....	77
Education and General Fund Expenditures by Function.....	78
<b><i>Our Graduates.....</i></b>	<b><i>79</i></b>
FY 2010–2012 Degrees Conferred.....	80
Total Degrees Conferred by Degree Level.....	80
Degrees Conferred by College and Major.....	81
Survey of Graduating Students.....	85



# Our University



## University History

---

Clayton State University opened in 1969 as Clayton Junior College, with Dr. Harry S. Downs as the founding president. The Board of Regents of the University System of Georgia elevated the institution to baccalaureate status (as Clayton State College) in 1986, to university status (as Clayton College & State University) in 1996 and approved the present name on May 18, 2005.

Upon the retirement of Harry Downs in January 1994, Dr. Richard A. Skinner became the University's second president. In June 1999, Skinner left Clayton State to head the University System of Georgia's new distance learning initiative, Georgia GLOBE. Michael F. Vollmer, Clayton State's acting Vice President for Fiscal Affairs and former Interim President of Middle Georgia College, served as Interim President for one year.

In April 2000, Dr. Stephen R. Portch, Chancellor of the University System of Georgia, announced that the Board of Regents had selected Dr. Thomas K. Harden as the University's new president, effective in June of that year. When President Harden was named chancellor of the University of Wisconsin Green Bay in December 2008, Dr. Thomas J. "Tim" Hynes, Jr., provost of the University of West Georgia, was named interim president of Clayton State, starting in May 2009. On Feb. 9, 2010, the Board of Regents announced that Hynes' appointment as president of Clayton State had been made permanent.

The beginning of the University can be traced to 1965 when the Board of Regents authorized three new junior colleges for the University System, one of which was designated for south metropolitan Atlanta. The Board considered several locations in the region, and chose the present site in Clayton County because of the unique combination of natural beauty and easy access to the then recently-completed Interstate 75. The citizens of Clayton County subsidized the initial construction of the state institution by passing a bond issue for nearly \$5 million. Construction of the new campus began in fall 1968, and the doors opened to 942 students less than a year later on September 30, 1969.

In 1981, the University added a technical division offering applied associate degrees and certificates in cooperation with the Georgia Department of Technical and Adult Education. Five years later Clayton State began its baccalaureate mission with programs in business administration and nursing. The institution has continued to add majors at the bachelor's level since that time. One notable example was the establishment of the Bachelor of Applied Science degree in 1996, as Clayton State emerged as a national leader in promoting opportunities for graduates from applied associate degree programs to "bridge" to bachelor's degrees with little, if any, loss of credit.

Five years after initiating its baccalaureate programs in 1986, Clayton State opened the doors to the finest small performance facility in the southeastern United States, Spivey Hall. Now, more than 20 years later, Spivey Hall retains its local, national and international reputation by presenting the best in jazz and classical music and an education outreach program that serves thousands of school children from throughout metro Atlanta annually.

On November 16, 2005, Clayton State's first graduate level program, the Master of Arts in Liberal Studies, was approved by the Board of Regents of the University System of Georgia, opening the door to a whole new world of meeting the educational needs of students and citizens in metro Atlanta. The Master of Arts in Liberal Studies is the only degree of its kind in the state, and is designed to give students with highly focused undergraduate degrees the opportunity to explore a more multidisciplinary approach. A second graduate program, the Master of Science in Nursing, was approved by the Board of Regents in June 2006, a third, the

*(Continued on page 6)*

## University History *(continued)*

---

Master of Health Administration, was approved in August 2006, and a fourth, a Master of Business Administration, in January 2007. The University's fifth and sixth graduate programs, a Master of Arts in Teaching in English and a Master of Arts in Teaching in Mathematics, were approved by the Board of Regents in October 2008. Graduate programs in Archival Studies (2009) and Psychology (2010) became the University's seventh and eight master's programs.

Clayton State's mission commits it to developing an understanding of advanced applications of modern technology. To that end, in January 1998 Clayton State became the first public university in the Southeast and one of the first in the nation to issue notebook computers to all students at all levels in all majors. This "Information Technology Project" (ITP) has transformed the campus and made Clayton State a national pioneer in "ubiquitous computing." Starting fall 2001, the University entered a new phase called "ITP-Choice," which maintains the requirement for ubiquitous mobile computing, while giving students the opportunity to purchase notebook computers rather than having the institution supply them.

The James M. Baker University Center, Clayton State's signature building, was completed in August 2004 and named in honor of Clayton State alumnus James M. "Jim" Baker in November 2005, and provides the University with a true "Center" for student life. The building contains a food service area, a help desk for servicing notebook computers, state-of-the-art visual technology classrooms, offices and enhanced learning facilities including wireless capabilities and more than 2,000 data drops.

In a six week period between August and October 2008, the University dedicated three new buildings; the University's first student housing (Laker Hall), the Student Activities Center and a new building for the AACSB-accredited School of Business. The LAB, a new annex to the Business and Health Sciences Building – devoted to adding more laboratory space for science classes -- opened in January 2011.

The purchase of the Atlanta Bible College property, now known as Clayton State - East, on Trammell Road, provides newly-renovated space for numerous University departmental offices as well as additional classroom space. In summer 2011, the University expanded student housing options with the addition of Clayton Station apartments adjacent to campus, increasing the main campus to 192 acres. In addition, instructional sites in Fayette, Henry, and Rockdale counties provide outreach to neighboring community populations, and eCore online courses extend educational alternatives even further.

The past several years at Clayton State have also been highlighted by the establishment of the nation's only joint state and federal archives facilities adjacent to campus, the institution of a comprehensive strategic planning process, and the reaffirmation of the University's accreditation by the Commission on Colleges of the Southern Association of Colleges and Schools (SACS).

Clayton State University is an NCAA Division II member, fielding in; men's and women's soccer, men's and women's cross country, men's and women's basketball, men's and women's indoor track, men's and women's outdoor track, men's golf and women's tennis, and competing in one of the top conferences in the nation at that level - the Peach Belt Conference. The Clayton State Lakers have enjoyed much success in their 20-year history, capped in March 2011 when the women's basketball team won the national championship by sweeping the six games of the NCAA tournament by an average of 21 points per game.

Source: University History, About Clayton State



## Mission of the University

---

Clayton State University cultivates an environment of engaged, experienced-based learning, enriched by active community service, that prepares students of diverse ages and backgrounds to succeed in their lives and careers.

Through a distinctive combination of proven and innovative methods of teaching and learning, Clayton State University will excel in preparing students from many walks of life to meet the challenges of living and working in a dynamic, global society.

Clayton State University is committed to:

- Creating an outstanding educational experience that stimulates intellectual curiosity, critical thinking, and innovation.
- Engendering a spirit of openness, understanding, collaboration, and mutual respect throughout the University.
- Fostering learning that engages students, faculty, staff, alumni, and the greater community.
- Expanding and allocating resources strategically according to Mission and Values, to support overall institutional effectiveness.
- Providing an inviting and supportive campus community for faculty, staff, and students. Repositioning Clayton State University in the higher education marketplace and beyond.

Source: Mission of the University, About Clayton State

# Strategic Plan

---

## ***Mission***

Clayton State University cultivates an environment of engaged, experienced-based learning, enriched by active community service, that prepares students of diverse ages and backgrounds to succeed in their lives and careers.

## ***Vision***

Through a distinctive combination of proven and innovative methods of teaching and learning, Clayton State University will excel in preparing students from many walks of life to meet the challenges of living and working in a dynamic, global society.

## ***Values***

Clayton State University is committed to:

1. Active Learning and Student Success
2. Teaching and Scholarship
3. Inclusiveness
4. Ethics and Integrity
5. Community Engagement

## ***Goals***

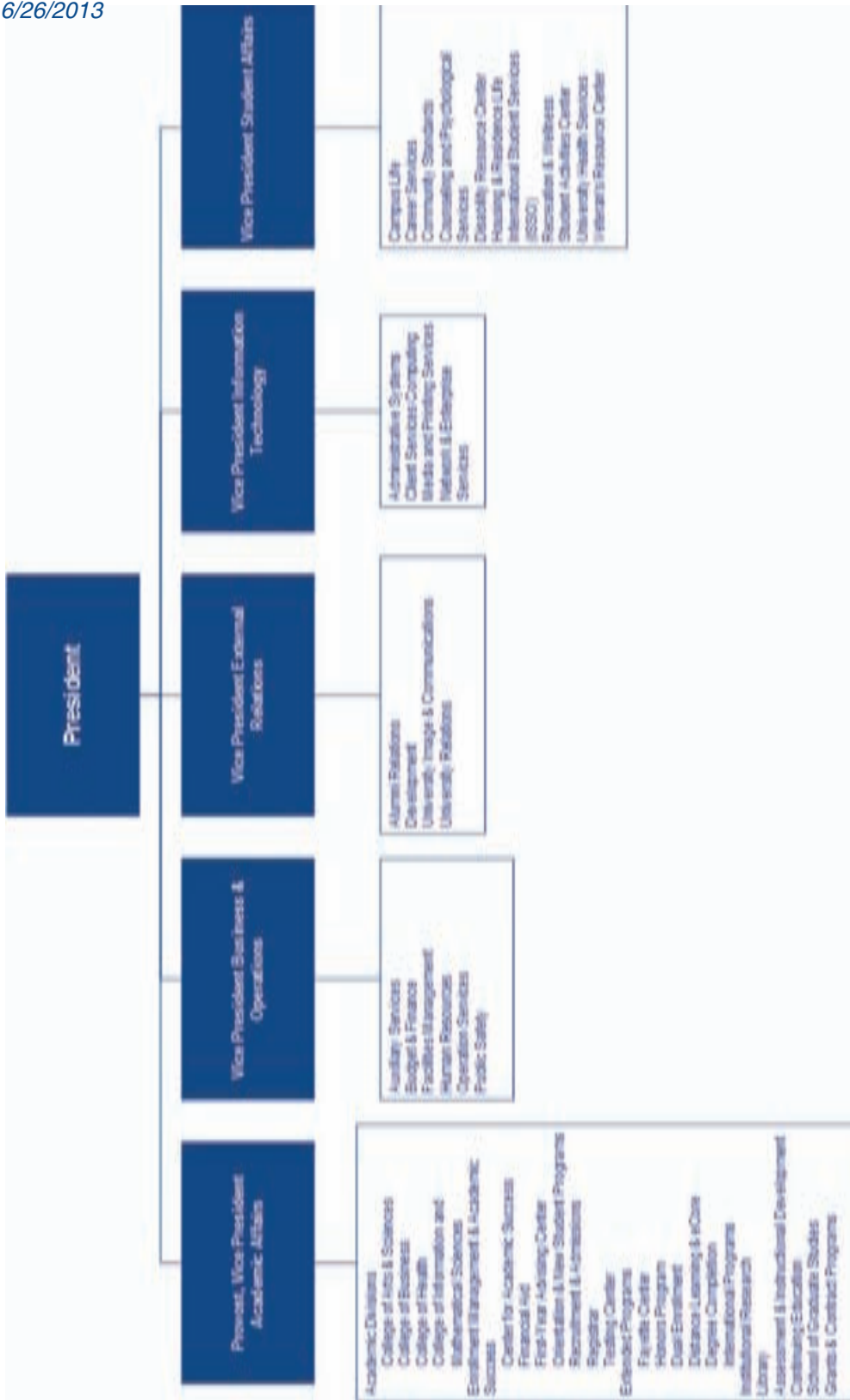
Clayton State University is committed to:

- Create an outstanding educational experience that stimulates intellectual curiosity, critical thinking, and innovation.
- Engender a spirit of openness, understanding, collaboration, and mutual respect throughout the University.
- Foster learning that engages students, faculty, staff, alumni, and the greater community.
- Expand and allocate resources strategically according to Mission and Values, to support overall institutional effectiveness.
- Provide an inviting and supportive campus community for faculty, staff, and students.
- Reposition Clayton State University in the higher education marketplace and beyond.

Source: Clayton State University's Strategic Plan

# Organization Charts

Effective 6/26/2013



---

## President's Cabinet

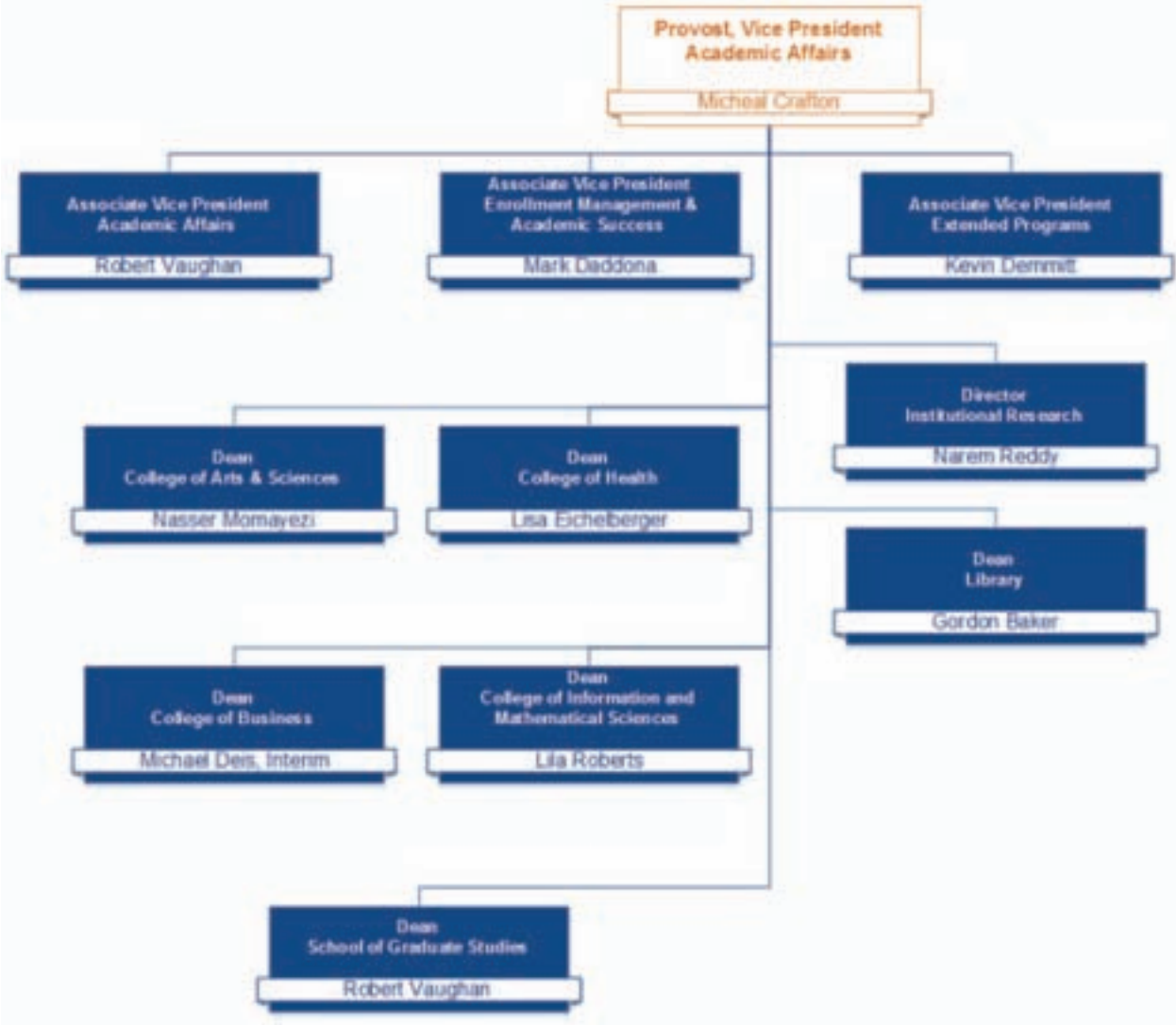
Effective 9/7/2013



# Provost Level Organization Charts

## Administrators & Deans

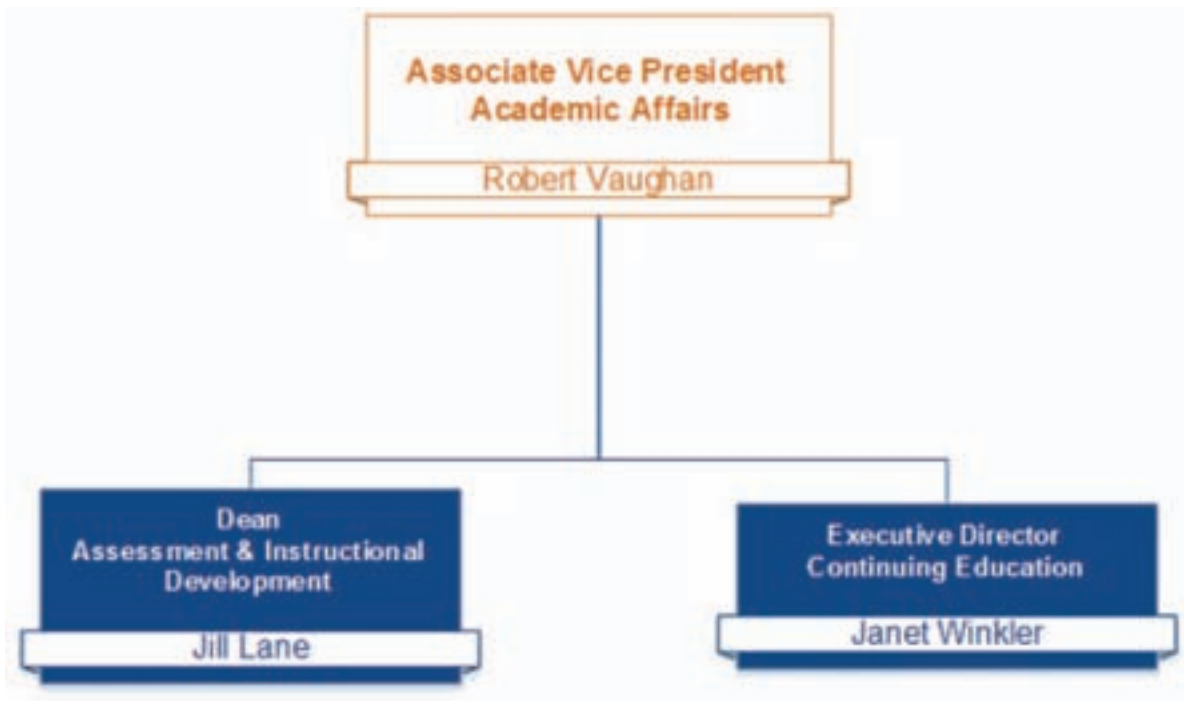
Effective 6/26/2013



---

## Other Administrators

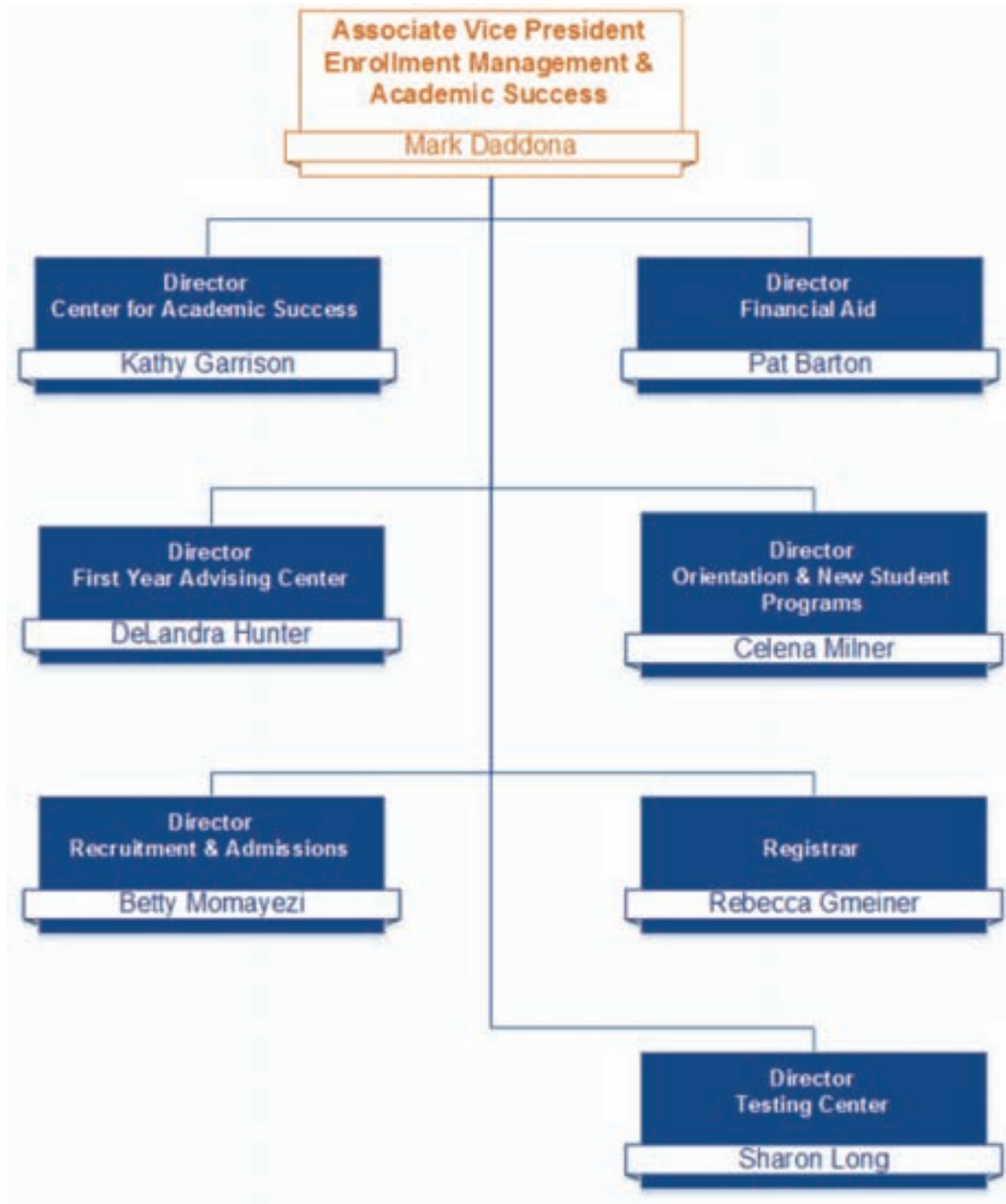
Effective 6/26/2013



---

## **Enrollment Management & Academic Success**

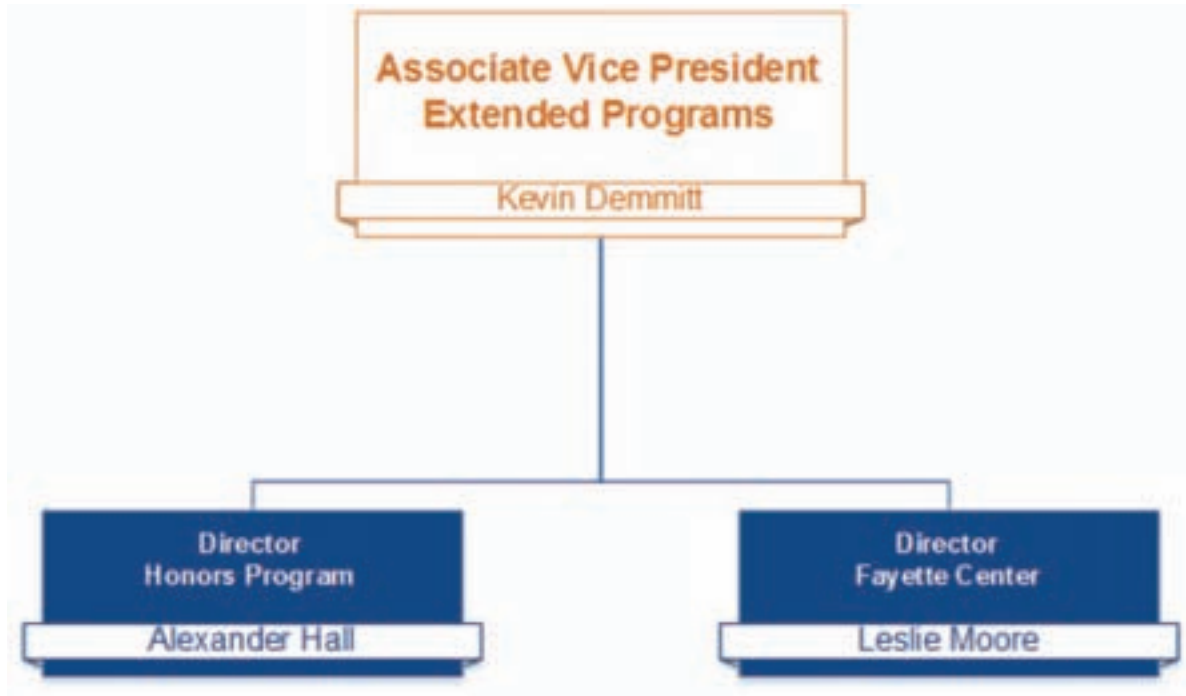
Effective 6/26/2013



---

## Extended Programs

Effective 6/26/2013

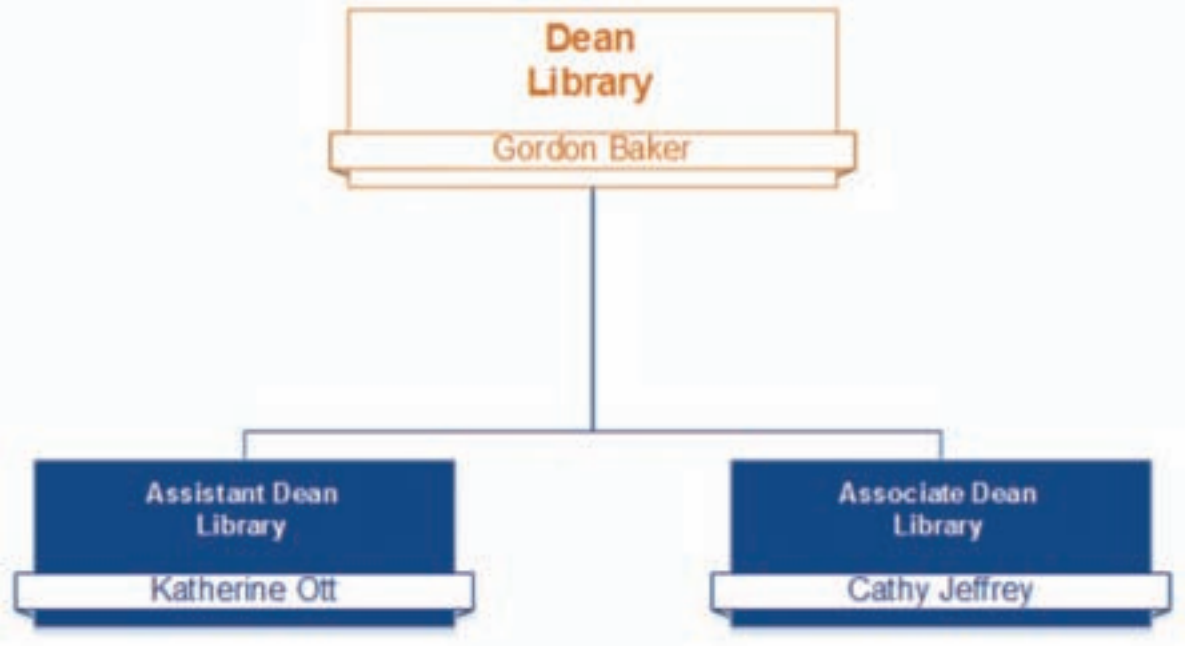




---

**Library**

Effective 6/26/2013



---

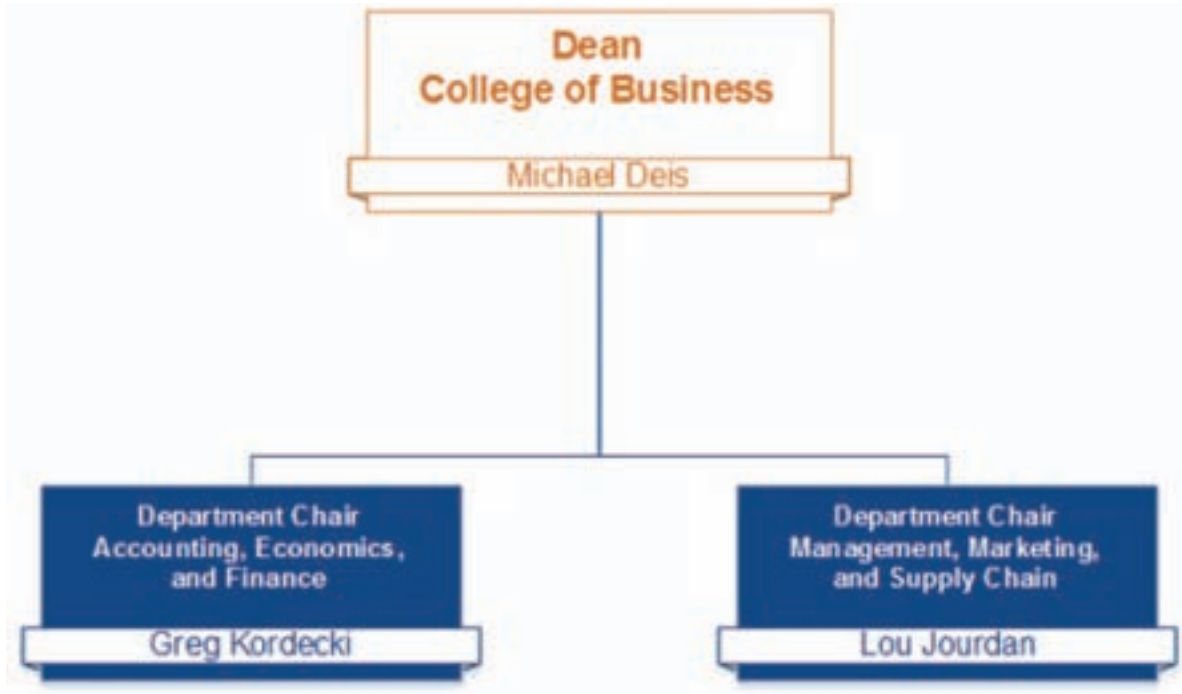
## Undergraduate Academics

College of Arts and Sciences – Effective 6/26/2013



---

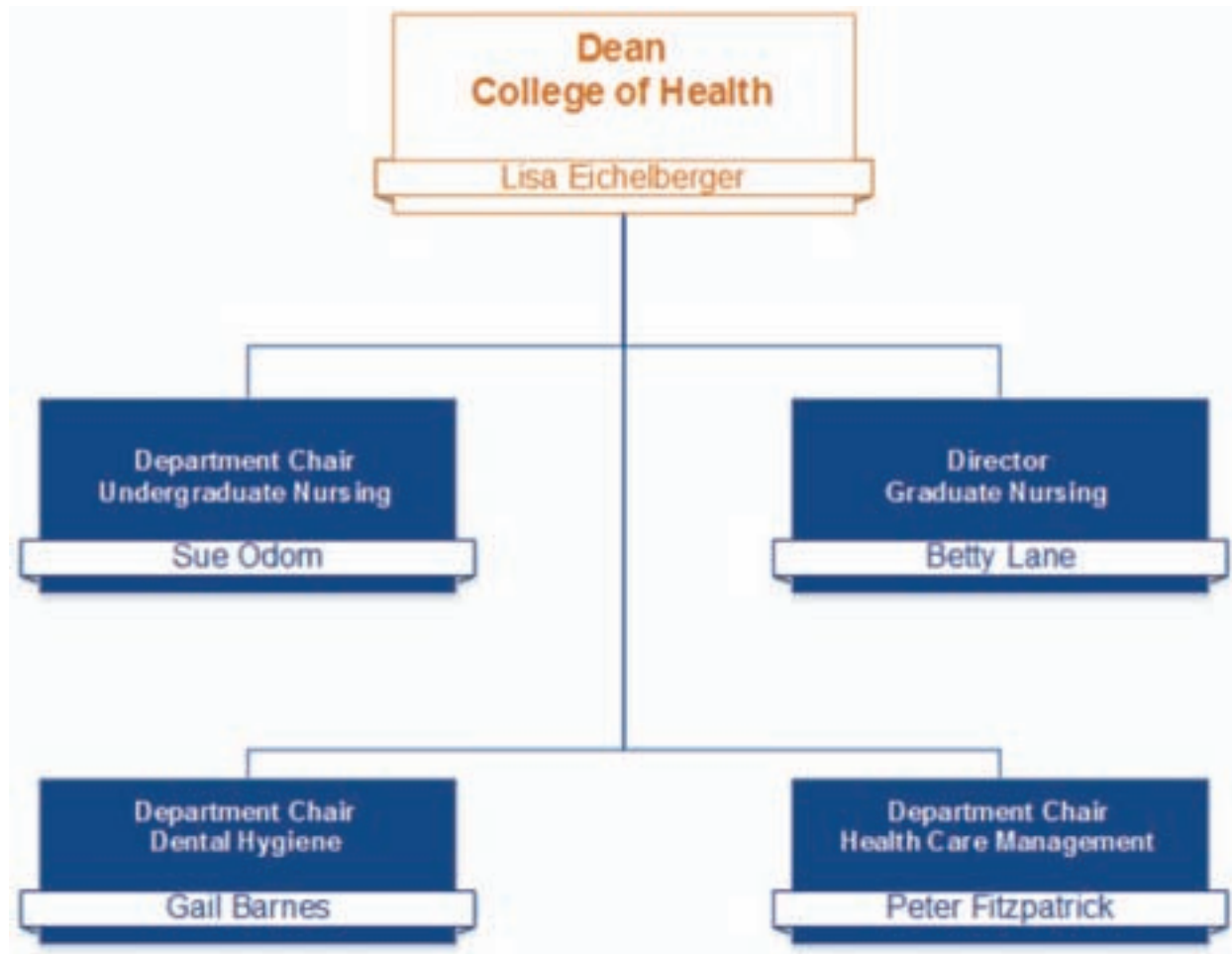
*College of Business – Effective 6/26/2013*



---

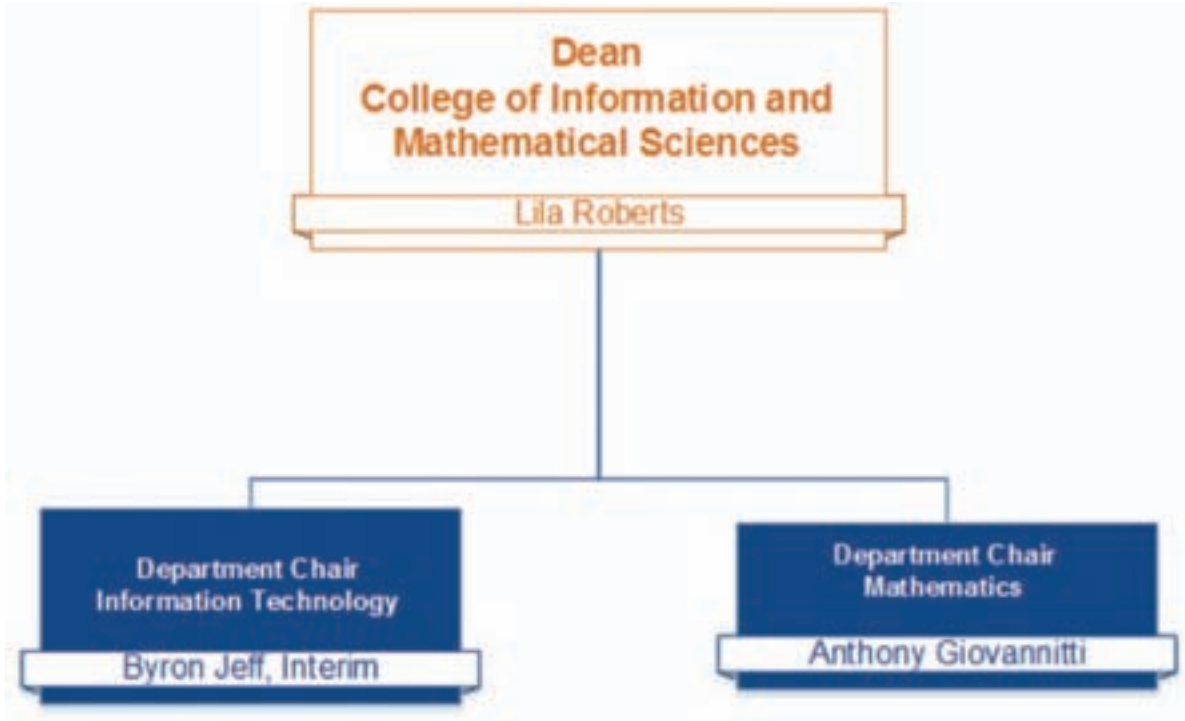
## **Undergraduate Academics**

*College of Health – Effective 6/26/2013*



---

*College of Information & Mathematical Sciences – Effective 6/26/2013*



# Accreditations and Approvals

---

## ***Regional Accreditations***

Commission on Colleges of the Southern Association of Colleges and Schools. Clayton State University is accredited by the Southern Association of Colleges and Schools Commission on Colleges to award associate, baccalaureate, and masters degrees. Contact the Commission on Colleges at 1866 Southern Lane, Decatur, Georgia 30033-4097 or call 404-679-4500 for questions about the accreditation of Clayton State University. Direct all other queries about programs, services, or admissions directly to Clayton State University, (678) 466-4000. For more information, visit [www.clayton.edu/sacs](http://www.clayton.edu/sacs).

## ***National Accreditations***

- Clayton State's College of Business is accredited by the Association to Advance Collegiate Schools of Business (AACSB).
- The Dental Hygiene Program is accredited by the American Dental Association Commission on Dental Accreditation (ADA).
- The Health Care Management Program holds the Association of University Programs in Health Administration Management (AUPHA) full certified undergraduate status.
- Clayton State University is an accredited institutional member of the National Association of Schools of Music (NASM).
- The Nursing program is accredited by the Commission on Collegiate Nursing Education (CCNE).
- The Paralegal Program is approved by the American Bar Association (ABA).
- The Teacher Education program is accredited by the National Council for Accreditation of Teacher Education (NCATE).

## ***State or Local Accreditations***

- The Nursing Program is approved by the Georgia Board of Nursing.
- The University's teacher preparation program is approved by the Georgia Professional Standards Commission.

## ***Financial Aid Programs***

The University has been approved for the following state and federal programs:

Veterans Administration Benefits	HOPE Scholarship & Grant Program
Federal Work Study Program	Zell Miller Scholarship
Federal Student Loans	Accel Program
Federal Pell Grants	Georgia's HERO Scholarship Program
Federal Supplemental Educational Opportunity Grants (SEOG)	Public Safety Memorial Grant
	The Student Loan Access Program

Source: Clayton State University Undergraduate Academic Catalog

# Degrees and Majors Authorized

---

## ***Masters***

Master of Archival Studies

Master of Arts in Teaching

*With Majors in:*

English (with Secondary Teacher Certification)

Mathematics (with Secondary Teacher Certification)

Master of Arts

*With Major in:*

Liberal Studies

Master of Business Administration

Master of Health Administration

Master of Science in Nursing

Master of Science

*With Major in:*

Psychology

Master of Arts in Teaching

*With Major in:*

Teacher Leadership

## ***Baccalaureate Majors***

Bachelor of Arts

*With Majors in:*

Communication and Media Studies

English

History

Liberal Studies

Middle Level Education

Music

Philosophy

Theatre

Bachelor of Applied Science

*With Majors in:*

Administrative Management

Technology Management

Bachelor of Business Administration

*With Majors in:*

Accounting

Business Marketing and Marketing Management

General Business

Logistics and Supply Chain Management

Management

Bachelor of Information Technology

Bachelor of Music

Bachelor of Science

*With Majors in:*

Biology

Chemistry

Computer Science

Criminal Justice

Health Care Management

Health Fitness Management

Integrative Studies

Legal Studies

Mathematics

Political Science

Psychology and Human Services

Sociology

Bachelor of Science in Dental Hygiene

Bachelor of Science in Information Technology

Bachelor of Science in Nursing

## ***Baccalaureate Minors***

African American Studies

Art

Aviation Administration

Business Administration for Non-Business Majors

Chemistry

Communication and Media Studies

Computer Science

Criminal Justice

English

Finance

French

Health & Fitness Management

History

*(Continued on page 22)*

---

### ***Baccalaureate Minors*** *(continued)*

Homeland Security / Emergency Management  
Information Technology  
Legal Studies  
Marketing  
Mathematics  
Music  
Philosophy

Political Science  
Psychology  
Sociology  
Spanish  
Supply Chain Management  
Theatre  
Women's Studies

### ***Associate***

Associate of Arts, Core Curriculum  
Associate of Science, Core Curriculum

### ***Applied Associate and Certificate***

Computer Networking Technology  
Information Technology  
Paralegal Studies

Source(s): USG Degrees and Majors Authorized for Clayton State University, Clayton State University Undergraduate Academic Catalog



## Fall Enrollment History and Academic Highlights

Year	Total	Annual % Change	Significant Developments of the Year
Fall 1969	942		Initial year as Clayton Junior College
Fall 1970	1,789	90	
Fall 1971	2,250	26	Accredited by SACS
Fall 1972	2,339	4	
Fall 1973	2,604	11	
Fall 1974	2,865	10	
Fall 1975	3,598	26	
Fall 1976	3,107	-14	
Fall 1977	3,139	1	
Fall 1978	2,963	-6	
Fall 1979	2,990	1	
Fall 1980	2,977	0	
Fall 1981	3,248	9	Established School of Technology
Fall 1982	3,692	14	
Fall 1983	3,603	-2	
Fall 1984	3,358	-7	
Fall 1985	3,131	-7	Granted Senior College Status
Fall 1986	3,290	5	
Fall 1987	3,484	6	Opened first off-campus facility in Jonesboro
Fall 1988	3,667	5	
Fall 1989	3,869	6	Awarded First Bachelor's Degree
Fall 1990	4,142	7	Opened Continuing Education Center
Fall 1991	4,548	10	Opened Spivey Hall
Fall 1992	4,866	7	
Fall 1993	4,760	-2	
Fall 1994	4,895	3	
Fall 1995	5,020	3	
Fall 1996	4,687	-7	
Fall 1997	4,714	1	
Fall 1998	4,274	-9	
Fall 1999	4,449	4	
Fall 2000	4,456	0	
Fall 2001	4,675	5	
Fall 2002	5,212	11	
Fall 2003	5,661	9	Opened Fayette County Hi Ed Center
Fall 2004	5,954	5	
Fall 2005	6,212	4	
Fall 2006	6,081	-2	Graduate Status Granted
Fall 2007	6,043	-1	
Fall 2008	6,074	1	Opened first campus housing building
Fall 2009	6,587	8	
Fall 2010	6,604	0	
Fall 2011	6,860	4	
Fall 2012	7,140	4	

Source(s): USG Semester Enrollment Reports, University Relations, Clayton State University

# Year In Review

---

## July 2012

- Kate Troelstra Named Vice President for External Relations
- Clayton State Ranks Third Among State Universities in Economic Impact
- Clayton State One of 10 Metro Atlanta Institutions to Participate in SunTrust Scholars Scholarship
- Clayton State Selected as a Lead Institution in Civic Learning Leadership National Initiative

## August 2012

- Clayton State Welcomes Third Group of Presidential Scholars
- Seventh Annual Clayton State New Student Convocation – Dreams Made Real
- Dr. Ali Dadpay Appointed Director of MBA Program
- Department of Information Technology Adds Computer Science to its Name
- Dr. Alexander Hall Named Winner of the Fourth Annual Gene Hatfield Scholar of the Year
- Dr. Virginia Bonner Wins Fourth Annual Gene Hatfield Teacher of the Year
- College of Business Embarks on Major Mentor Program
- Clayton State Enrollment Tops 7,000 for the First Time

## September 2012

- Attorney General Olens and Former Governor Barnes Highlight Clayton State's Annual Constitution Week
- Clayton State Holds 20th Annual Alumni Dinner at Turner Field's 755 Club
- Annual Clayton County College PROBE Fair Held at Clayton State
- Judith Leavitt Leads off School of Nursing Faculty Scholar Program for 2012/2013
- Clayton State Ranked Fifth Among Public Regional Colleges in the South by *U.S. News & World Report*
- Clayton State Hosts Business School Delegation from Senegal
- Myisha Garnes Appointed Director of Annual Fund
- Clayton State Adds Butterfly Garden/Hummingbird Garden

## October 2012

- Clayton State Student Gloria Le Receives Award for Undergraduate Research Fellowship from American Society for Microbiology
- Clayton State Business Students Winners at Mediation Tournaments
- Dr. Victoria Foster Presents on Capitol Hill for Hartford Policy Leadership Institute
- Department of Campus Life Holds Fourth Annual Diversity and Multicultural Conference
- Pat Barton and the HUB win Gold Medals at Chancellor's Customer Service Awards

## **Year In Review** *(continued)*

---

- Former Atlanta Mayor Shirley Franklin Speaks at Clayton State as a Faculty Scholar for the School of Nursing
- Professors Corrado and Dadpay Participate in WXIA-TV Presidential Debate Truth Test Watch Group
- Basketball Court Named in Honor of Former Long-time Athletic Director Mason Barfield
- Clayton State Previews its Future -- Dreams. Made Real -- in Spivey Hall
- Jarrett Terry Joins College of Information and Mathematical Sciences as Assistant Dean

### **November 2012**

- College of Business Dean's Distinguished Lecture Series Features UMB Bank's Peter deSilva
- Clayton State Theatre's Fall Production -- "Macbeth"
- The HUB Wins Video Contest at USG Computing Conference
- Clayton State Women's Forum Annual Auction, Chili Cook-Off, Quilt Raffle
- Caillouet Essay Wins Second National Award

### **December 2012**

- Georgia Power Acknowledges MAT Graduates Jabril Willis and Shaneeka Favors with New Teacher Assistance Grants
- The Loch Shop Launches New Custom Fan Shop; [www.claytonstategear.com](http://www.claytonstategear.com)
- Clayton State Makes Dreams Real for 440 Graduates at Commencement

### **January 2013**

- Dr. Michael Deis Named Interim Dean for College of Business
- Dr. Kurt-Alexander Zeller Directs National Opera Association Production
- College of Information and Mathematical Sciences Hosts First Lego League Super Regional Qualifier
- Clayton State Music Division Granted Full Membership in NASM
- Names Chosen for Clayton State – East Buildings... Arbor Hall and Woodlands Hall
- Dental Hygiene Students Provide Free Oral Health Screenings and X-rays
- Bartlett Index Named for Mathematics and Chemistry Double Major Marcus Bartlett

### **February 2013**

- Free VITA Tax Assistance Program from College of Business Accounting Students Starts
- Clayton State Library Hosts Metro Atlanta Helen Ruffin Reading Bowl
- Homecoming 2013 Highlighted by Parade, Basketball Doubleheader
- CBS Sports Network Features Clayton State Basketball Player Zac Bradley

## **Year In Review** *(continued)*

---

- Clayton State Hosts Sixth Annual Southeast Philosophy Congress
- Shirley Franklin Returns to Clayton State for School of Nursing Faculty Scholars Program
- College of Information and Mathematical Sciences Hosts Regional MathCounts Competition
- Teacher Education Professor Dr. Mary Hollowell Leaves for Xi'an, China on Fulbright Teaching Scholarship
- Clayton State Announces New Minor in Corporate Communication
- Clayton State Hosts Georgia Association of Women in Higher Education Annual Conference
- Clayton State Hosts Southern Chapter of College Music Society Conference

### **March 2013**

- Clayton State Hosts Georgia Psychology Society's Eighth Annual Meeting
- Undefeated Women's Basketball Team Ranked Number One in NCAA Division II
- Drameka Griggs Named Peach Belt Player of the Year
- Drameka Griggs Named Daktronics Player of Year for NCAA Division II Southeast Region
- Clayton State Holds its Academic Research Conference
- Georgia Senate Honors Clayton State Student Marcus Bartlett
- Math Students Excel at MAA Southeastern Section Meeting
- Clayton State Hosts NCAA Division II Women's Basketball Southeast Regional
- Clayton State Wins NCAA Division II Women's Basketball Southeast Regional
- Judith Leavitt Returns to Clayton State as School of Nursing Faculty Scholar
- National Archives at Atlanta, Clayton State Host Fifth Annual Civic Engagement Student Research Conference
- Dr. Michiko Otaki Plays at National Gallery of Art for 2013 National Cherry Blossom Festival
- Clayton State, Korean Health Sciences College Sign MOU
- Alpha Lambda Delta Honor Society Holds Induction Ceremony
- Drameka Griggs Named to WBCA All-American Team
- Georgia Legislature Approves Funding for Clayton State University Science Building

### **April 2013**

- Thomas Giffin Named Director of Development
- Clayton State Opera Presents Ruddigore, or The Witch's Curse
- Dr. Lisa Eichelberger Named Co-Director of New GNLC Grant
- Clayton State Announces the G. Robert Oliver Scholarship for Legal Studies
- Clayton State Theatre's Spring 2013 Production, "The Importance of Being Earnest"
- School of Nursing Hosts Annual Cultural Diversity Conference

## **Year In Review** *(continued)*

---

- Paul Harrison Named Men's Basketball Coach
- Clayton State Announces New Film Minor
- Pat Keane, Dr. James Keebler Named Winners of 2013 Alice Smith Awards
- Clayton State Named One of the Top 100 Workplaces in Atlanta for Second Consecutive Year

### **May 2013**

- Dr. Alexander Hall Named Director of Honors Program
- Governor Nathan Deal Address Graduates at Spring Commencement Ceremony
- Lanelle LaRue Named Alumni Association President
- Nursing Faculty Elicia Collins and Dr. Debra Cody Honored for Nursing Excellence by *AJC*
- AmeriCorps Program Honored by Local Mayors
- Teacher Education Unit Re-Accredited by NCATE

### **June 2013**

- College of Business Holds Annual SEBA Program
- Master of Health Administration and Director Dr. Thomas McIlwain Recognized for Excellence
- Nursing Alumna Leslie Branson Wins DAISY Award for Extraordinary Nursing

Source: University Relations, Clayton State University

## Legends / Mythology

---

### *Our Swans*

In early 1995, Dr. Barbara G. King, an assistant professor of Reading, donated two swans to Clayton State. She apparently had gotten these two mute swans (that's the type of swan they are) from somewhere, and found she couldn't keep them on her own property. The first two swans were named Rhett and Scarlet. All was ducky until April 1997. Rhett and Scarlet nested and produced several eggs. Unfortunately, a stray dog (one newspaper article described him a "a Yankee") found the nest, and Rhett was killed by the dog while defending the nest.

One egg eventually hatched. It was named, "Bonnie." However, Bonnie disappeared after a few weeks, we think the victim of a snapping turtle.

Paul Bailey of Media & Printing Services conducted a fund-raising effort of campus to buy a new swan. That effort brought Ashley, named in a campus-wide contest, to Clayton State in June 1997. He seemed to get along swimmingly with Scarlet. Sadly, though, Scarlet died in July 1997, the victim of lead poisoning from swallowing a fisherman's sinker. (This is why fishing was eventually banned from everywhere but the dam area at the far end of the lake.)

Paul jumped back in, raised more money, made more phone calls, and then brought another female swan to campus -- Melanie (the name the result of another campus-wide poll). Like the GWTW Melanie, this bird proved somewhat sickly, and died (of natural causes, we think) in January 1999. Next up was "Belle" who joined us in February 1999.

Belle and Ashley hatched four eggs on Mother's Day 2000, which was just after the lake was officially named "Swan Lake." Dr. Brad Rice of Academic Affairs and John Shiffert of University Relations were instrumental in the lake-naming effort. That happened in an impressive ceremony on March, 20, 2000, presided over by Mike Vollmer.

Unfortunately, Ashley died shortly after the eggs were hatched in June 2000, also of lead poisoning from a fisherman's sinker. Three of the four cygnets died... the one survivor continues to float around Swan Lake with Belle. In April 2002, the swans produced eggs once again and were protectively fenced from the ongoing University Center construction and foot traffic around the lake. After the mother swan's many long, hot days on the nest, the eggs failed to hatch.

Visit the University Legends webpage for updates on the continuing saga of Our Swans.

### *Our Mascot*

It's no mystery that Clayton State is home to a diverse setting of students, but deep within the walls of this university a mystery, a secret is hiding, a secret that remains to be solved.

In 1969, Clayton Junior College was established and along with the college was a beautiful setting of trees and eight gorgeous lakes. Now, the difficulty when the college was built was that it was in mid January and Atlanta was in the middle of one of the worst winter storms in its history. By the time construction was able to begin several of the lakes were just beginning to lose their icy covers.

When the construction crews were digging to make room for the dam, an amazing discovery was found deep below the surface. What looked to be a large piece of rock was actually a large chunk of ice. No one thought twice about and just assumed it was ice and left it at that.

---

With the work picking back up and the huge ice rock lying off to the side, no one noticed that the ice began to crack. Upon returning to the dam where the ice had been left, the workers were astonished to find the ice had split in two and a hollow inside was left, as if something had hatched from within. Immediately, questions began to arise and concerns shot across the community. "What had been let loose?"... "Should we be afraid?" After the initial shock of what may have happened had worn off, life on the construction site resumed back to normal.

Several years passed by until this story was brought up again. In 1990, a strange string of occurrences began to happen. Several of the ducks around the campus were turning up dead, looking as if some animal had feasted them on. When the campus police was filming a portion of the duck crime scene, they saw on the tape that a large, shadowy creature was walking amongst the trees and disappeared in the lake. Now, what had the police concerned was what animal could walk upright and then live underwater as well. Chaos began to stir up around the school, and several media outlets were clamoring to get a piece of this story. Rewards were offered to any student who could capture this beast on film, and anyone who could retrieve this thing alive would be granted immediate completion of a bachelor's degree.

Over the years hundreds of photos and video footage has turned up claiming to feature this famous creature of Clayton State, who has come to be known as Loch. While no solid proof has been offered to verify that this creature actually exists, many claim to have encountered Loch. Based on their accounts they say that he is in reality friendly, and just wants to interact with students, faculty and staff. This would explain Loch's many sightings at Soccer and Basketball games and several other university functions.

So, what is this "Loch?" Is it a beast? Is it a friend? We may never find out the answers to all of our many questions, but it is worth the risk to find out. Is this the reason why this elusive creature has become the mascot of our university? Many students think it is, and maybe you should as well.

Source: Legends, About Clayton State



# Our Students

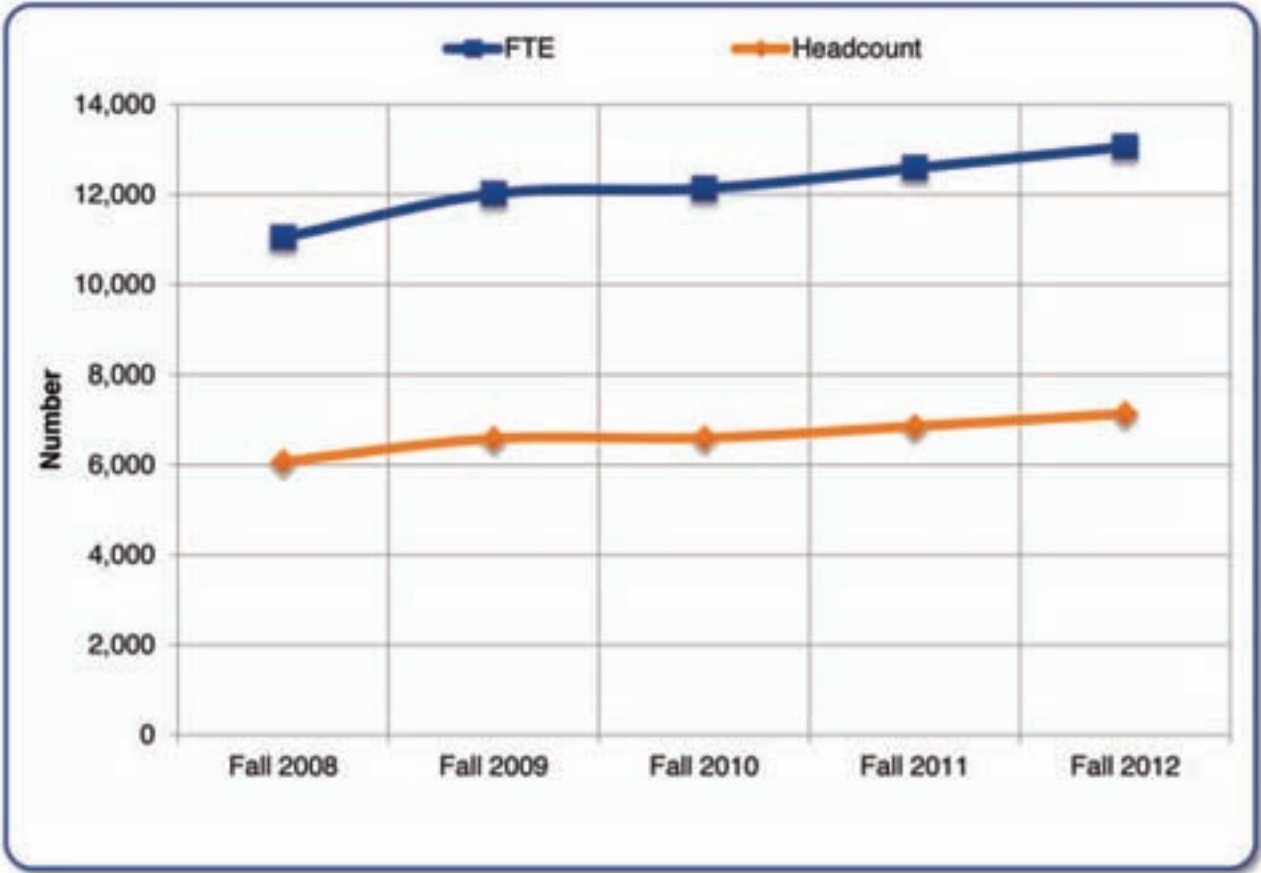




# Five Year Enrollment at Clayton State University

## Fall Semesters

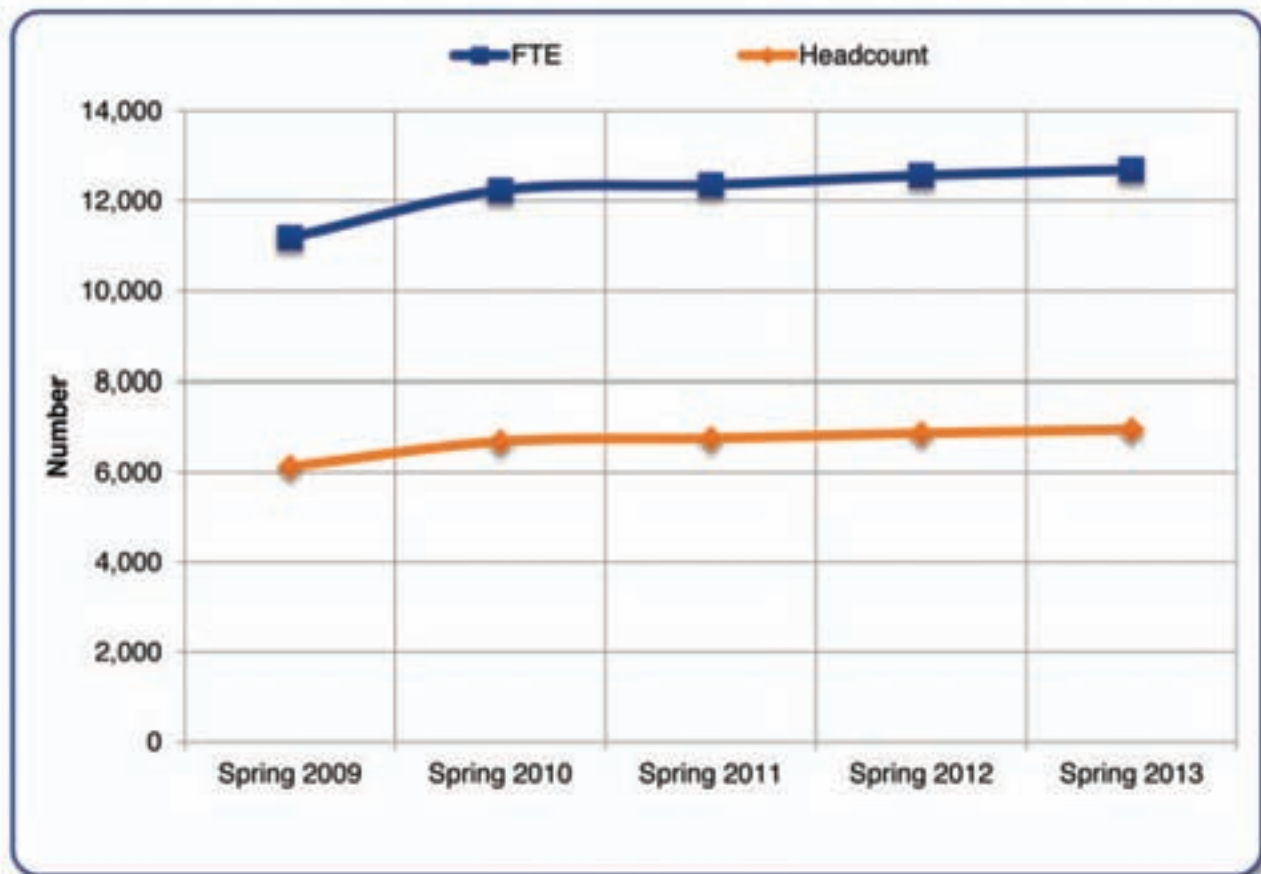
	Fall 2008	Fall 2009	Fall 2010	Fall 2011	Fall 2012
Headcount	6,074	6,587	6,604	6,860	7,140
FTE	4,972	5,430	5,530	5,730	5,920



Source: USG Semester Enrollment Reports

## Spring Semesters

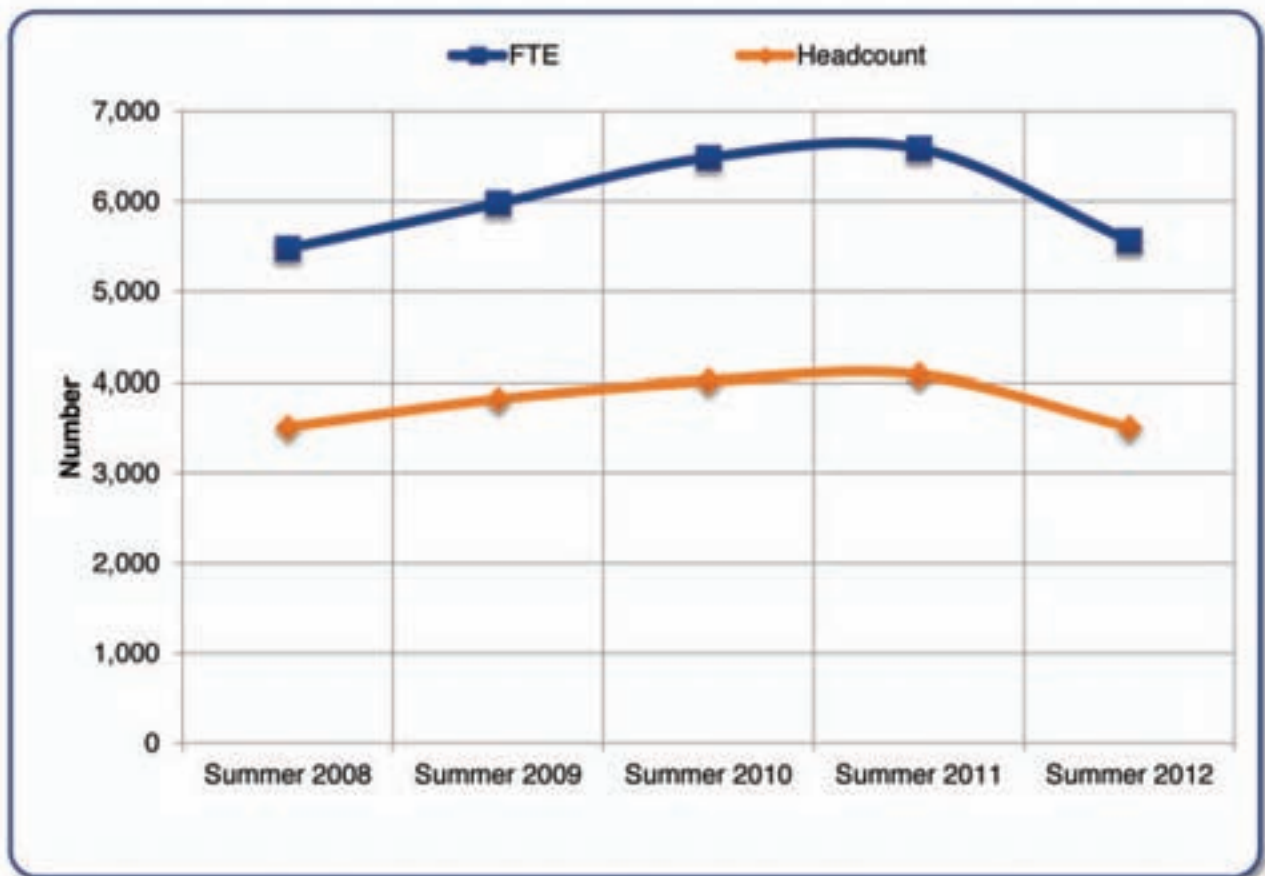
	Spring 2009	Spring 2010	Spring 2011	Spring 2012	Spring 2013
Headcount	6,127	6,687	6,759	6,872	6,955
FTE	5,057	5,550	5,599	5,694	5,739



Source: USG Semester Enrollment Reports

## Summer Semesters

	Summer 2008	Summer 2009	Summer 2010	Summer 2011	Summer 2012
Headcount	3,512	3,820	4,014	4,080	3,508
FTE	1,963	2,159	2,472	2,506	2,054

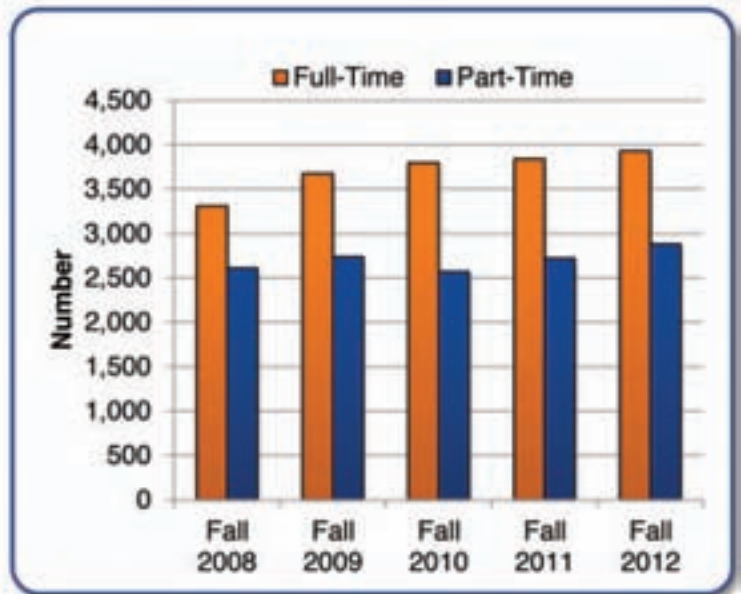


Source: USG Semester Enrollment Reports

## Fall Semester Full-Time Equivalency

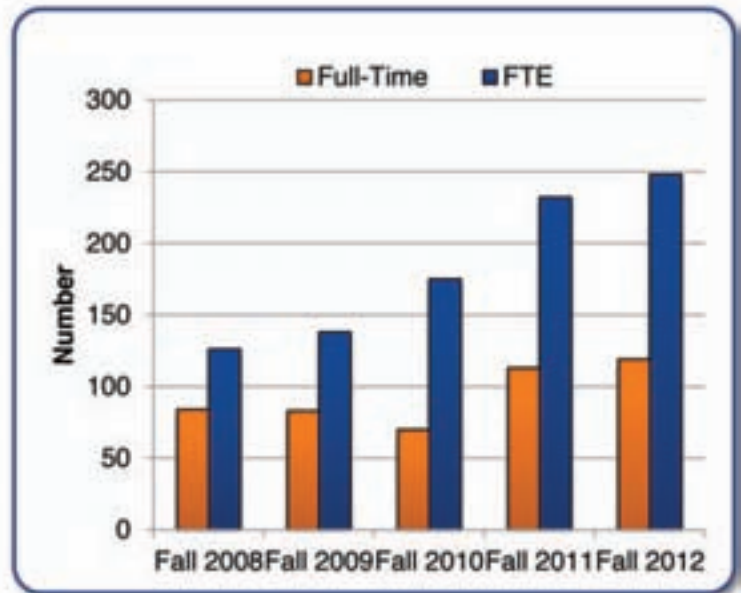
### Undergraduate

	Full-Time	Part-Time	FTE
Fall 2008	3,311	2,610	4,846
Fall 2009	3,675	2,738	5,292
Fall 2010	3,798	2,568	5,355
Fall 2011	3,842	2,719	5,498
Fall 2012	3,929	2,879	5,672



### Graduate

	Full-Time	Part-Time	FTE
Fall 2008	84	69	126
Fall 2009	83	91	138
Fall 2010	70	168	175
Fall 2011	113	186	232
Fall 2012	119	213	248

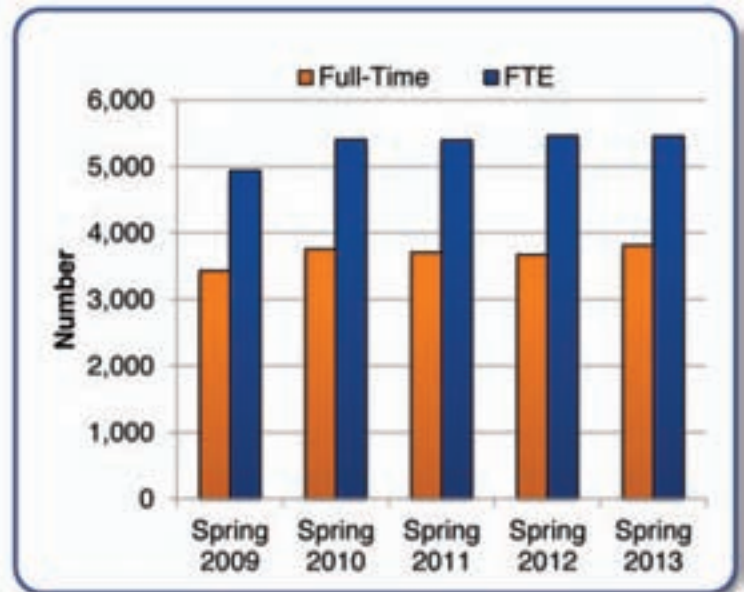


Source: Banner SIS

## Spring Semester Full-Time Equivalency

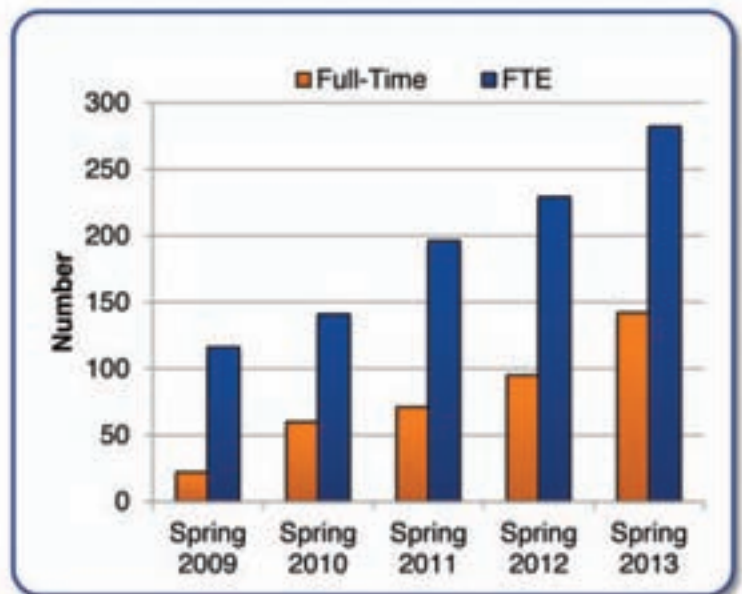
### Undergraduate

	Full-Time	Part-Time	FTE
Spring 2009	3,436	2,526	4,941
Spring 2010	3,761	2,736	5,409
Spring 2011	3,714	2,780	5,403
Spring 2012	3,678	2,892	5,465
Spring 2013	3,818	2,772	5,457



### Graduate

	Full-Time	Part-Time	FTE
Spring 2009	22	143	116
Spring 2010	60	130	141
Spring 2011	71	194	196
Spring 2012	95	134	229
Spring 2013	142	223	282

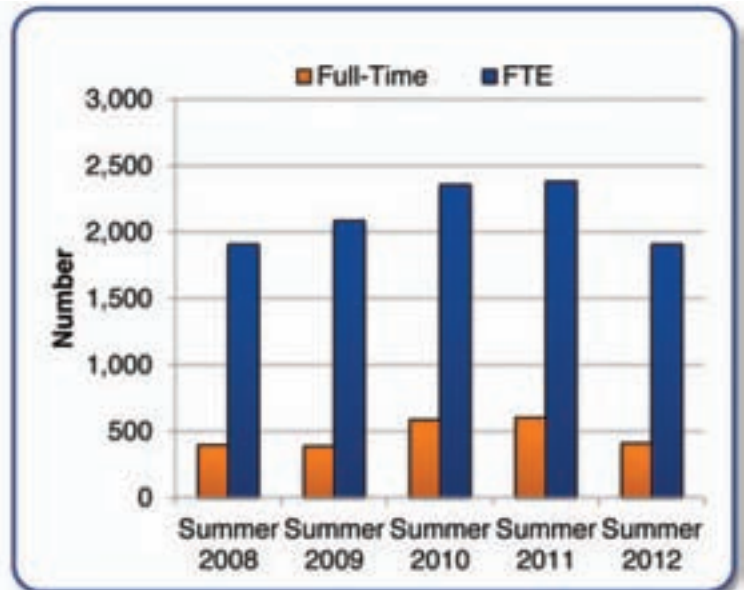


Source: Banner SIS

# Summer Semester Full-Time Equivalency

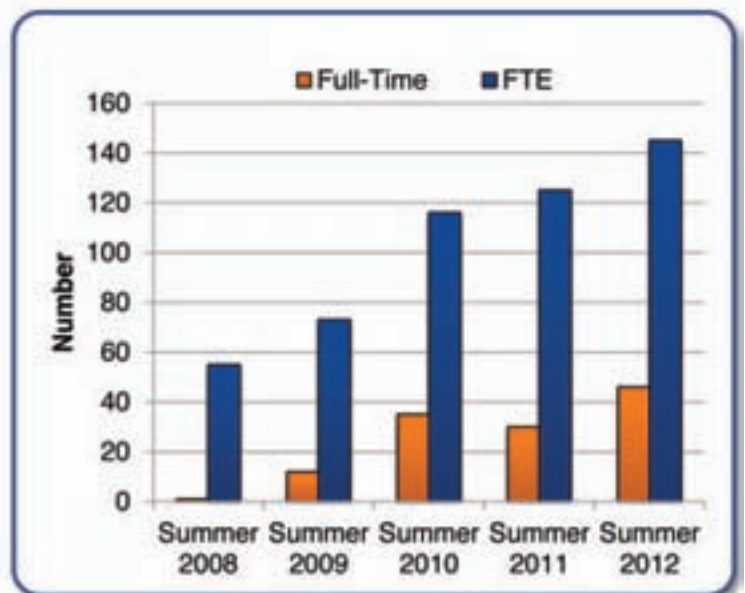
## Undergraduate

	Full-Time	Part-Time	FTE
Summer 2008	398	3024	1908
Summer 2009	389	3314	2086
Summer 2010	588	3250	2356
Summer 2011	604	3291	2381
Summer 2012	410	2889	1908



## Graduate

	Full-Time	Part-Time	FTE
Summer 2008	1	89	55
Summer 2009	12	105	73
Summer 2010	35	141	116
Summer 2011	30	155	125
Summer 2012	46	163	145

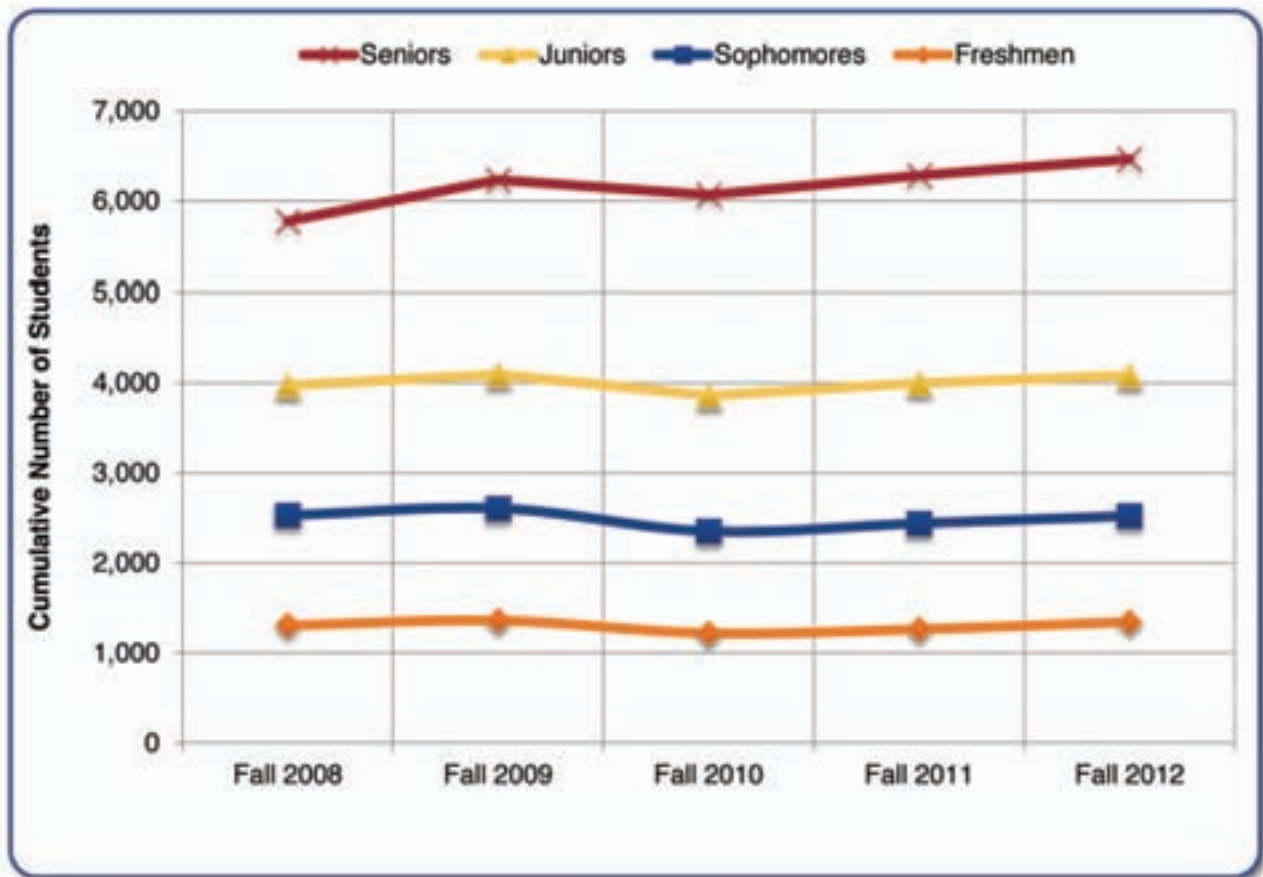


Source: Banner SIS

# Enrollment by Student Status

## Fall Semesters

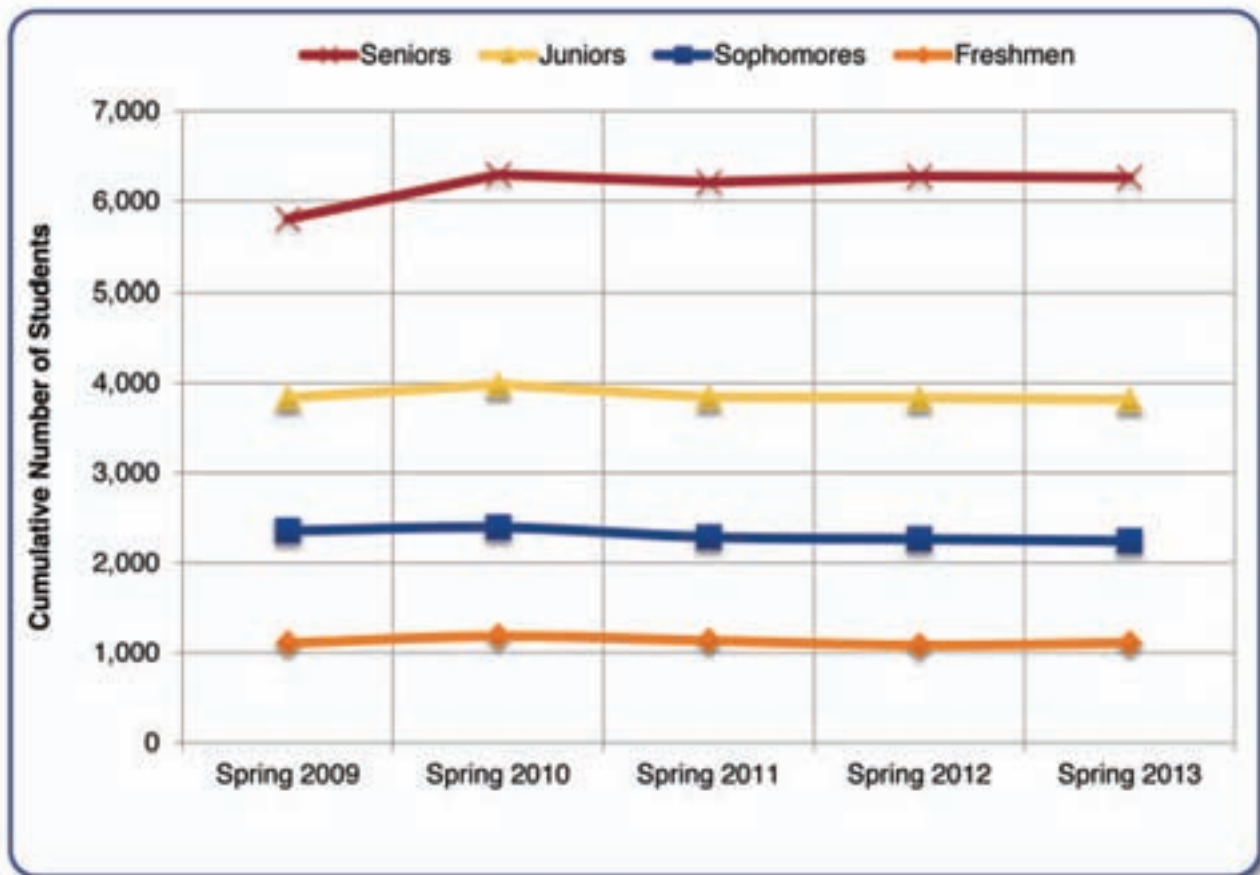
	Fall 2008	Fall 2009	Fall 2010	Fall 2011	Fall 2012
Freshmen	1,306	1,359	1,219	1,263	1,344
Sophomores	1,223	1,247	1,132	1,176	1,178
Juniors	1,444	1,487	1,507	1,559	1,560
Seniors	1,800	2,141	2,207	2,285	2,383
Graduate	153	174	238	299	332
Other	148	179	301	278	343
<b>Total</b>	<b>6,074</b>	<b>6,587</b>	<b>6,604</b>	<b>6,860</b>	<b>7,140</b>



Source: USG Semester Enrollment Reports

## Spring Semesters

	Spring 2009	Spring 2010	Spring 2011	Spring 2012	Spring 2013
Freshmen	1,107	1,185	1,135	1,084	1,109
Sophomores	1,248	1,209	1,151	1,180	1,133
Juniors	1,483	1,589	1,556	1,571	1,575
Seniors	1,964	2,310	2,364	2,439	2,443
Graduate	165	190	265	302	364
Other	160	204	288	296	331
<b>Total</b>	<b>6,127</b>	<b>6,687</b>	<b>6,759</b>	<b>6,872</b>	<b>6,955</b>

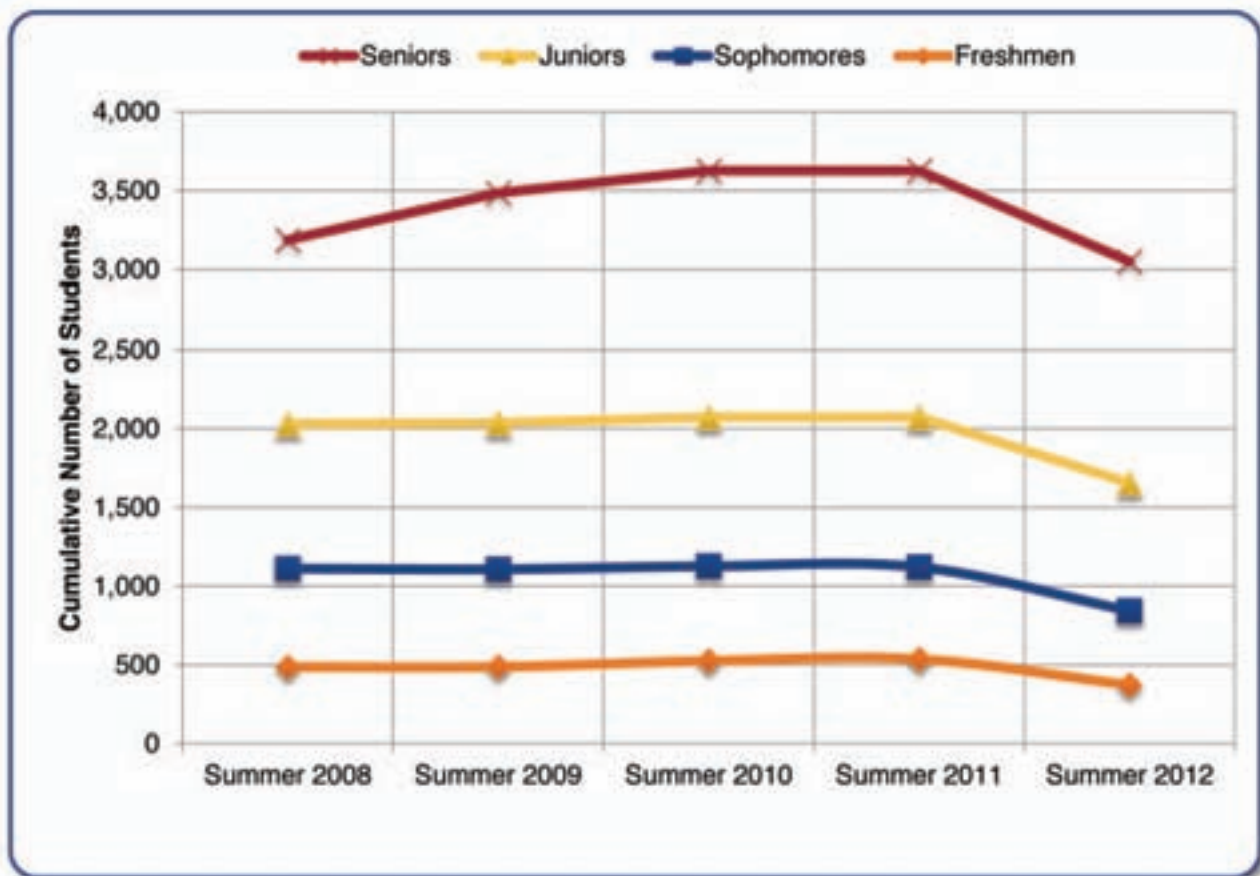


Source: USG Semester Enrollment Reports



## Summer Semesters

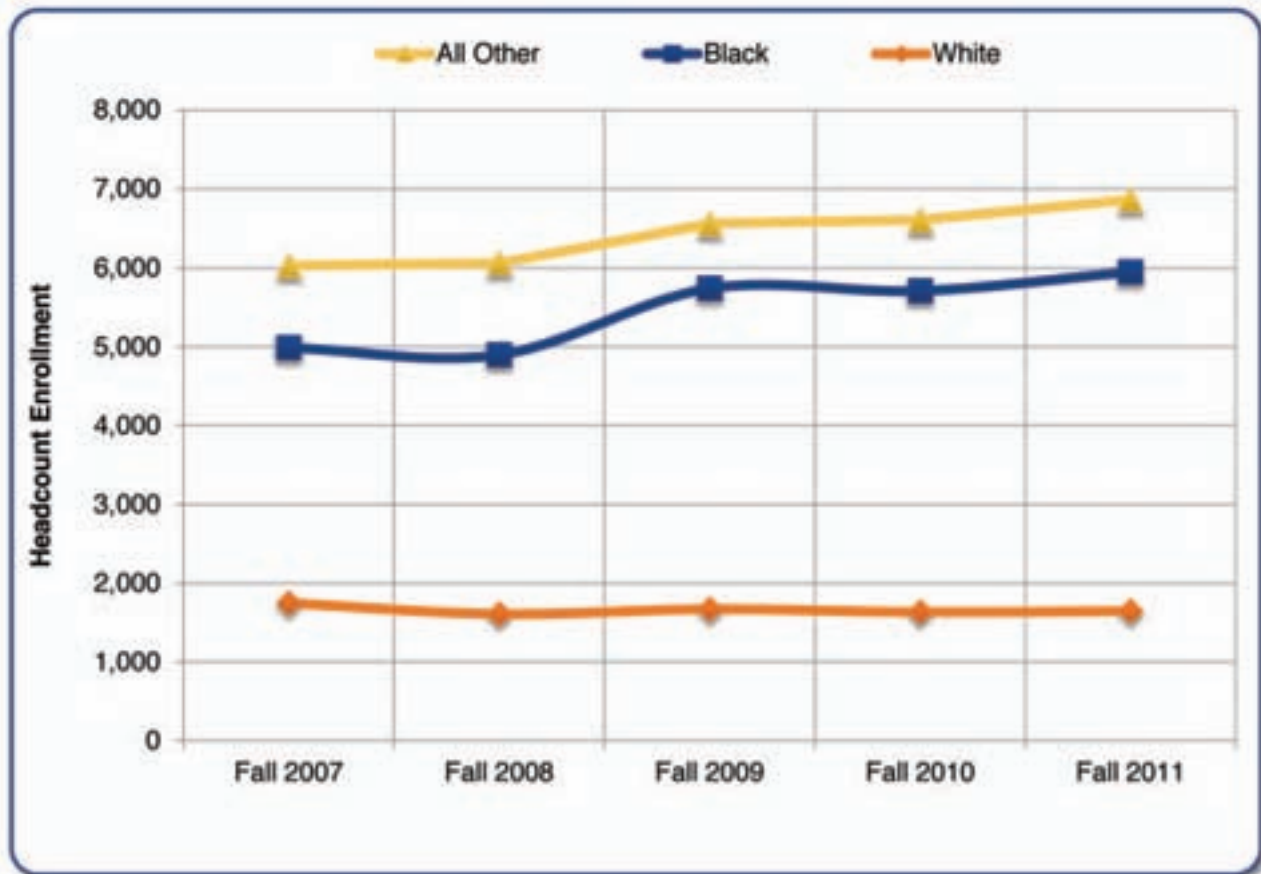
	Summer 2008	Summer 2009	Summer 2010	Summer 2011	Summer 2012
Freshmen	486	487	525	536	372
Sophomores	625	620	601	584	471
Juniors	919	929	946	953	812
Seniors	1,156	1,448	1,554	1,554	1,395
Graduate	90	117	176	185	209
Other	236	219	212	268	249
<b>Total</b>	<b>3,512</b>	<b>3,820</b>	<b>4,014</b>	<b>4,080</b>	<b>3,508</b>



Source: USG Semester Enrollment Reports

## Fall Enrollment by Ethnic Group

	Fall 2008	Fall 2009	Fall 2010	Fall 2011	Fall 2012
Am. Indian or Alaskan Native	13	28	24	12	11
Asian	299	291	292	305	321
Black	3,291	4,071	4,078	4,304	4,496
Hispanic (of any race)	172	295	241	194	149
Multiracial	247	180	126	154	182
Native Hawaiian or Other Pacific Islander		21	10	9	7
White	1,608	1,670	1,632	1,645	1,697
Unknown	444	31	201	237	277
<b>Total Enrollment</b>	<b>6,061</b>	<b>6,559</b>	<b>6,604</b>	<b>6,860</b>	<b>7,140</b>
<b>% Minority</b>	<b>66.1</b>	<b>74.2</b>	<b>72.2</b>	<b>72.6</b>	<b>72.4</b>

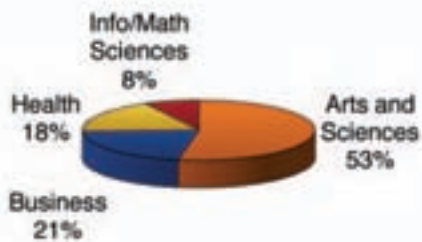


Source: USG Semester Enrollment Reports

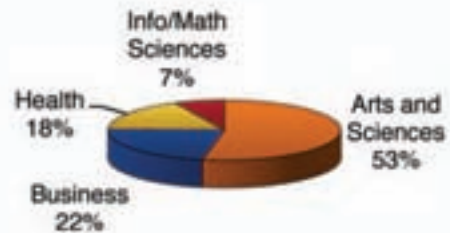
## Enrollment by Gender and College

College	Male	Female	Total	Percent of Total	Male Percent	Female Percent
<b>Fall 2012</b>						
Arts and Sciences	1,135	2,641	3,776	52.9	30.1	69.9
Business	491	1,028	1,519	21.3	32.3	67.7
Health	132	1,175	1,307	18.3	10.1	89.9
Info/Math Sciences	373	165	538	7.5	69.3	30.7
<b>Total</b>	<b>2,131</b>	<b>5,009</b>	<b>7,140</b>	<b>100.0</b>	<b>29.8</b>	<b>70.2</b>
<b>Spring 2013</b>						
Arts and Sciences	1,077	2,536	3,613	51.9	29.8	70.2
Business	485	1,068	1,553	22.3	31.2	68.8
Health	134	1,108	1,242	17.9	10.8	89.2
Info/Math Sciences	385	162	547	7.9	70.4	29.6
<b>Total</b>	<b>2,081</b>	<b>4,874</b>	<b>6,955</b>	<b>100.0</b>	<b>29.9</b>	<b>70.1</b>

**Fall 2012 Enrollment by College**



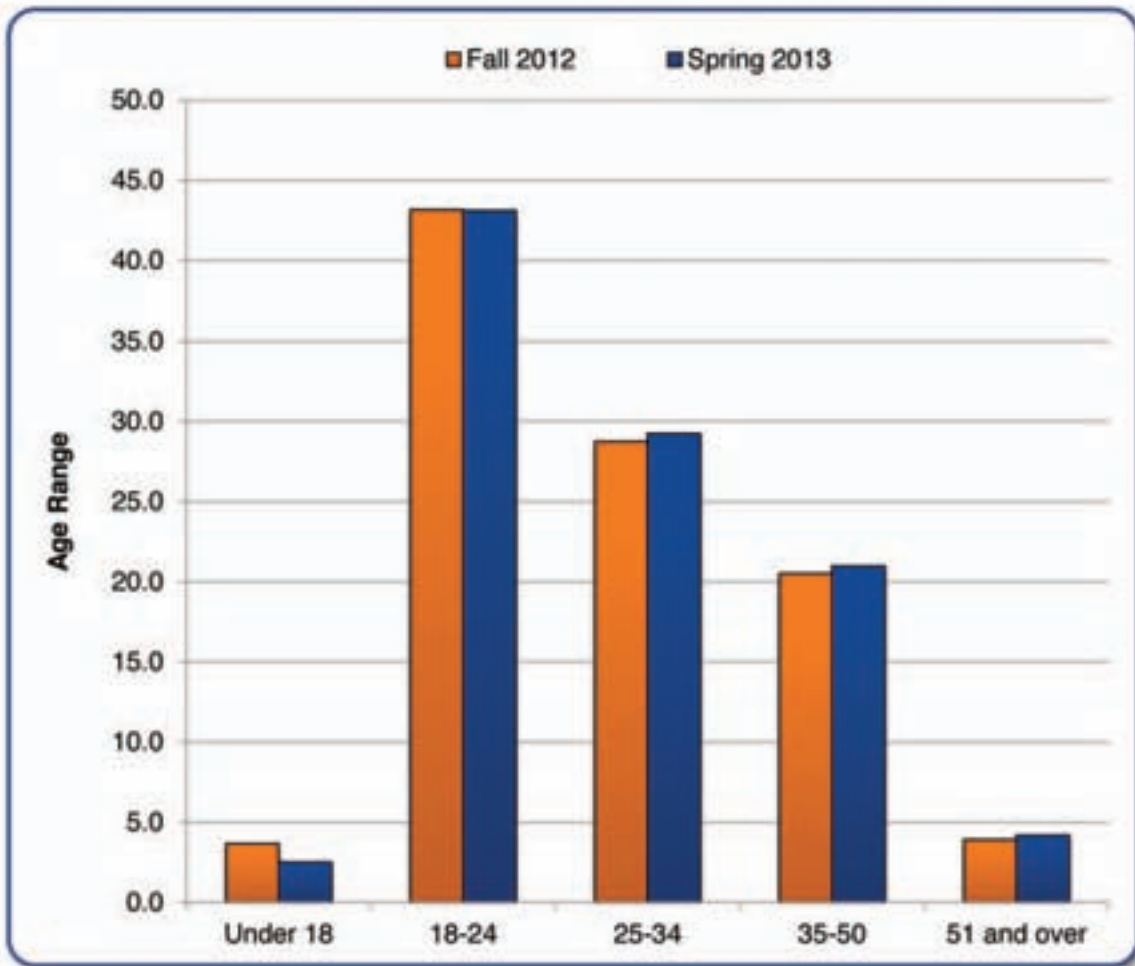
**Spring 2012 Enrollment by College**



Source: Banner SIS

## Enrollment by Age

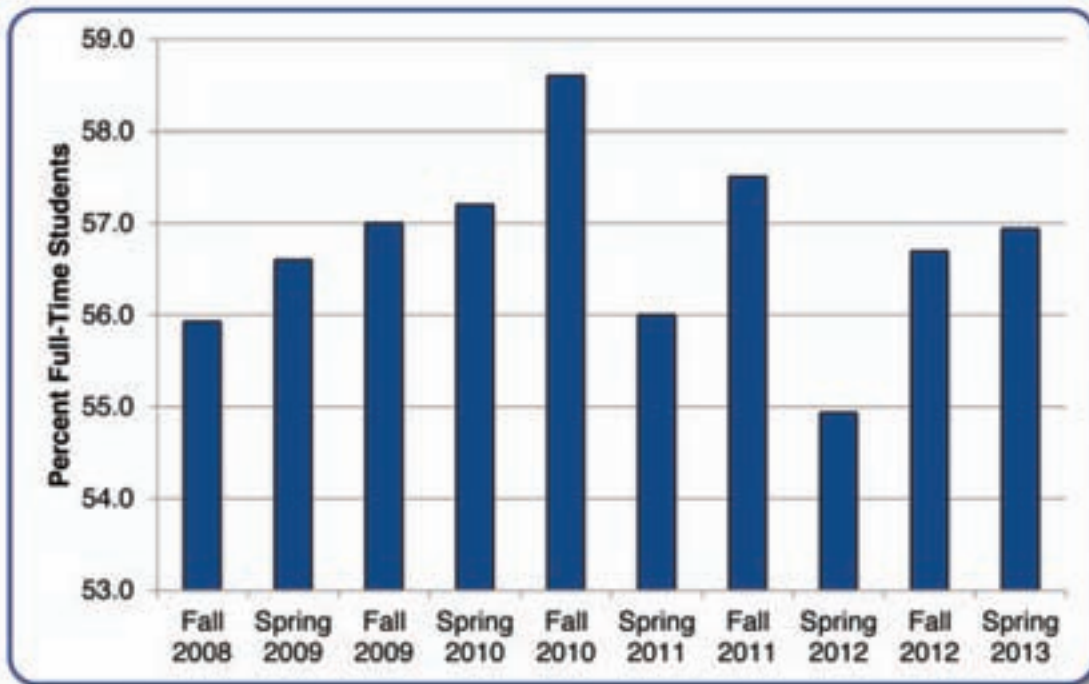
Age Range	Fall 2012		Spring 2013	
	Number of Students	Percent of Students	Number of Students	Percent of Students
Under 18	261	3.7	174	2.5
18-24	3,082	43.2	2,998	43.1
25-34	2,053	28.8	2,034	29.2
35-50	1,465	20.5	1,459	21.0
51 and over	279	3.9	290	4.2
<b>Total</b>	<b>7,140</b>	<b>100.0</b>	<b>6,955</b>	<b>100.0</b>
Average Age	29		29	
Oldest Age	76		80	
Youngest Age	14		15	



Source: USG Data Warehouse

## Enrollment by Full-Time / Part-Time Status

Semester	Full Time	Part Time	Total	% Full Time
Fall 2008	3,397	2,677	6,074	55.9
Spring 2009	3,468	2,659	6,127	56.6
Fall 2009	3,755	2,823	6,587	57.0
Spring 2010	3,825	2,682	6,687	57.2
Fall 2010	3,868	2,736	6,604	58.6
Spring 2011	3,785	2,974	6,759	56.0
Fall 2011	3,945	2,915	6,860	57.5
Spring 2012	3,775	3,097	6,872	54.9
Fall 2012	4,048	3,092	7,140	56.7
Spring 2013	3,960	2,995	6,955	56.9



Source: USG Semester Enrollment Reports

## Student Course Loads

Fall 2012		
Status/Credit Hours	Number of Students	Percent of Students
<b>Part-Time</b>		
1-5	361	5.1
6-11	2,518	35.3
Graduate (1-8)	213	3.0
<b>Total</b>	<b>3,092</b>	<b>43.3</b>
<b>Full-Time</b>		
12-15	3,509	49.1
16+	420	5.9
Graduate (9+)	119	1.7
<b>Total</b>	<b>4,048</b>	<b>56.7</b>
Spring 2013		
<b>Part-Time</b>		
1-5	365	5.2
6-11	2,407	34.6
Graduate (1-8)	223	3.2
<b>Total</b>	<b>2,995</b>	<b>43.1</b>
<b>Full-Time</b>		
12-15	3,325	47.8
16+	493	7.1
Graduate (9+)	142	2.0
<b>Total</b>	<b>3,960</b>	<b>56.9</b>

Source: USG Data Warehouse

## Student Credit Hours

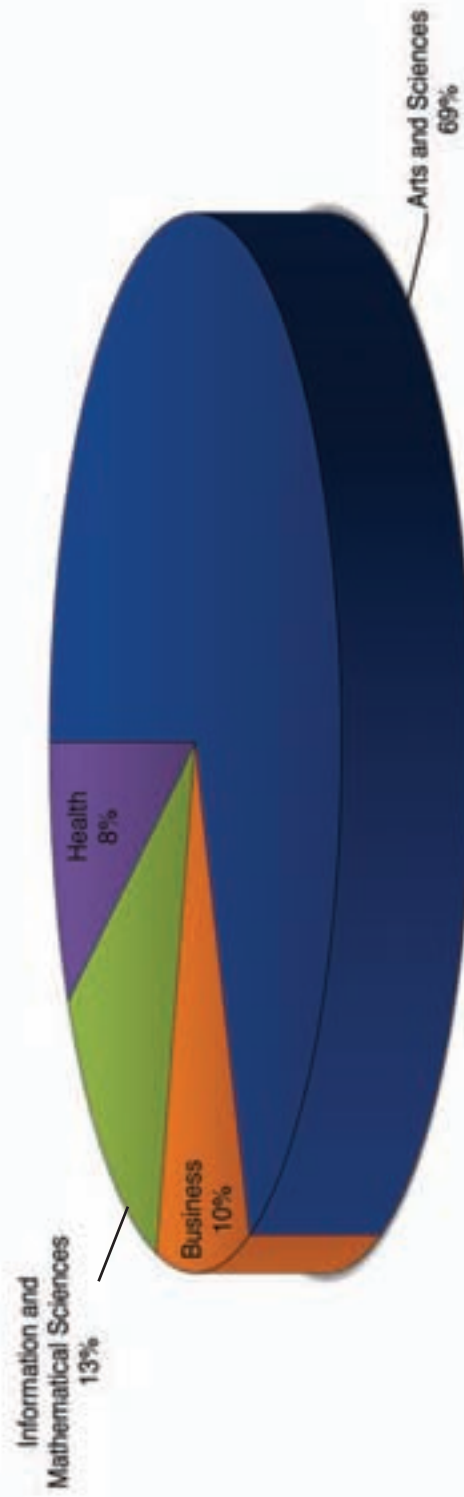
### Undergraduate Credit Hours by Department

		Fall 2008	Fall 2009	Fall 2010	Fall 2011	Fall 2012
<b>University Total</b>		<b>66,635</b>	<b>69,813</b>	<b>69,681</b>	<b>70,916</b>	<b>73,367</b>
<b>Arts and Sciences</b>	<b>Department</b>					
	Communicative Arts and Integrative Studies	6,749				
	English		6,462	6,384	5,409	5,709
	Humanities		9,390	9,111	9,800	9,738
	Interdisciplinary Studies		294	414	481	1,775
	Language and Literature	6,168				
	Music	1,525				
	Natural Sciences	7,317	8,111	8,021	8,316	8,156
	Psychology	4,671	5,118	5,247	5,649	6,060
	Social Sciences	9,888	9,740	8,819	8,796	8,066
	Teacher Education	1,127	1,135	1,077	1,142	1,002
	Visual and Performing Arts		4,576	4,246	4,518	4,990
<b>Total</b>		<b>37,445</b>	<b>44,826</b>	<b>43,319</b>	<b>44,111</b>	<b>45,496</b>
<b>Business</b>	<b>Department</b>					
	Business	6,904	8,326	7,300	7,397	
	Law, Economics, Accounting, and Finance					3,522
<b>Total</b>		<b>6,904</b>	<b>8,326</b>	<b>7,300</b>	<b>7,397</b>	<b>6,859</b>
<b>Information and Mathematical Sciences</b>	<b>Department</b>					
	Information Technology	1,365	2,396	2,417	2,686	2,773
<b>Total</b>		<b>6,112</b>	<b>5,881</b>	<b>5,169</b>	<b>5,254</b>	<b>5,566</b>
<b>Total</b>		<b>7,477</b>	<b>8,277</b>	<b>7,586</b>	<b>7,940</b>	<b>8,339</b>
<b>Professional Studies</b>	<b>Department</b>					
	Administrative and Technology Management	2,917				
<b>Total</b>		<b>2,917</b>				
<b>Health</b>	<b>Department</b>					
	Nursing	3,641	3,917	5,127	4,636	4,707
	Dental Hygiene	668	647	605	759	628
<b>Total</b>		<b>4,309</b>	<b>4,564</b>	<b>5,732</b>	<b>5,395</b>	<b>5,335</b>
	Health Care Management	2,665	2,067	2,550	2,910	3,417
	Health Fitness Management	540	443	580	706	1,058
<b>Total</b>		<b>3,205</b>	<b>2,510</b>	<b>3,130</b>	<b>3,616</b>	<b>4,475</b>
<b>Learning Support</b>						
<b>Total</b>		<b>831</b>	<b>834</b>	<b>1,994</b>	<b>1,534</b>	<b>1,787</b>
<b>Other</b>						
<b>Total</b>		<b>630</b>	<b>476</b>	<b>620</b>	<b>923</b>	<b>1,076</b>

Due to reorganization in Spring 2007, Fall 2009, and Spring 2013, some departments and colleges may have been adjusted.

Source: Banner SIS

## Graduate Credit Hours by Program





## Graduate Credit Hours by Program

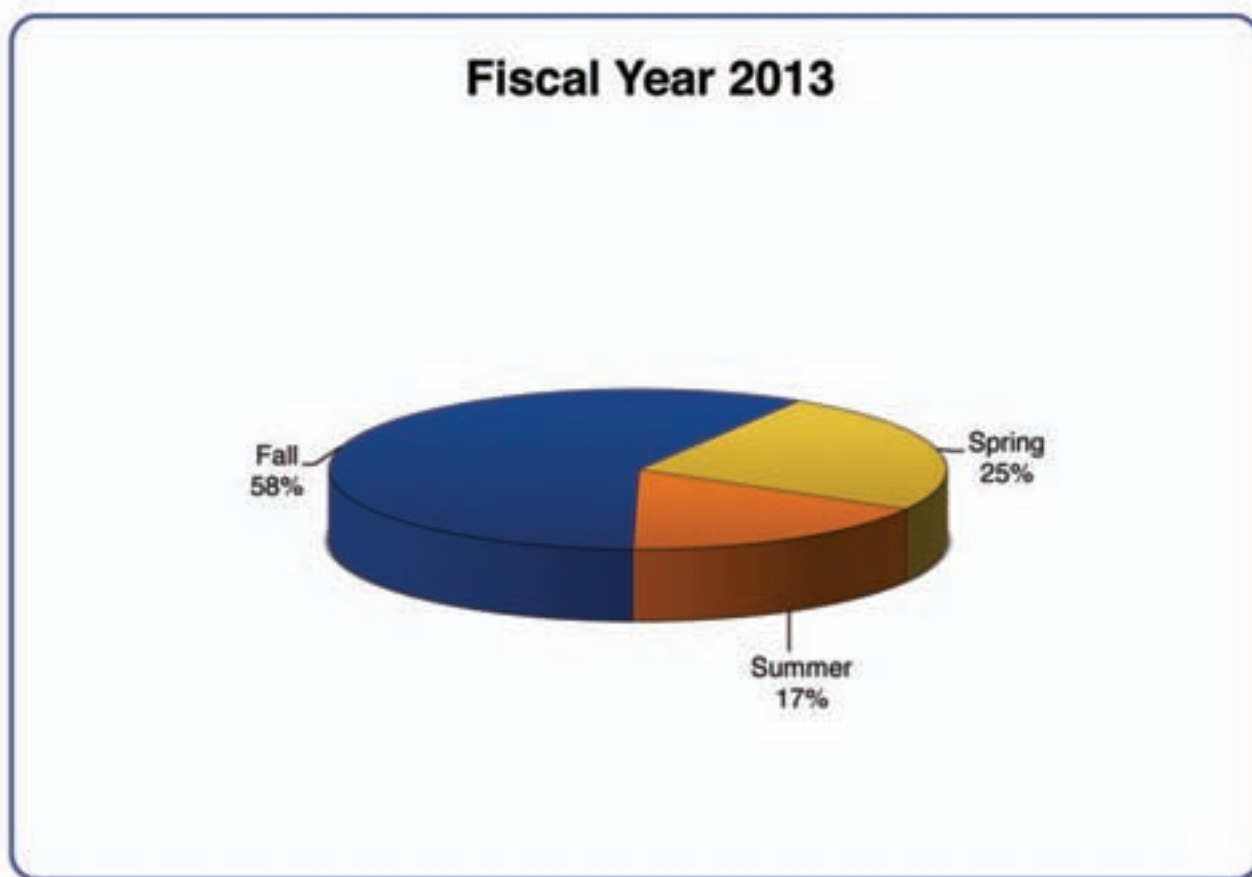
		Fall 2008	Fall 2009	Fall 2010	Fall 2011	Fall 2012
<b>University Total</b>		<b>942</b>	<b>982</b>	<b>1,305</b>	<b>1,704</b>	<b>1,855</b>
<b>Arts and Sciences</b>	<b>Degree Program</b>					
	Master of Arts in Liberal Studies	88	150	135	225	260
	Master of Teaching in English		68	106	89	96
	Master of Psychology			54	171	278
<b>Total</b>		<b>88</b>	<b>218</b>	<b>295</b>	<b>485</b>	<b>634</b>
<b>Business</b>	<b>Degree Program</b>					
	Master of Business Administration	730	597	709	868	812
<b>Total</b>		<b>730</b>	<b>597</b>	<b>709</b>	<b>868</b>	<b>812</b>
<b>Information and Mathematical Sciences</b>	<b>Degree Program</b>					
	Master of Teaching in Mathematics		56	72	81	78
	Master of Archival Studies			60	123	174
<b>Total</b>			<b>56</b>	<b>132</b>	<b>204</b>	<b>252</b>
<b>Nursing</b>	<b>Degree Program</b>					
	Master of Science in Nursing	124	111	169	147	157
<b>Total</b>		<b>124</b>	<b>111</b>	<b>169</b>	<b>147</b>	<b>157</b>
	Master of Health Administration	213	287	283	432	442
<b>Total</b>		<b>213</b>	<b>287</b>	<b>283</b>	<b>432</b>	<b>442</b>

Source: Banner SIS

## New Student Enrollment

### *By Semester and Term*

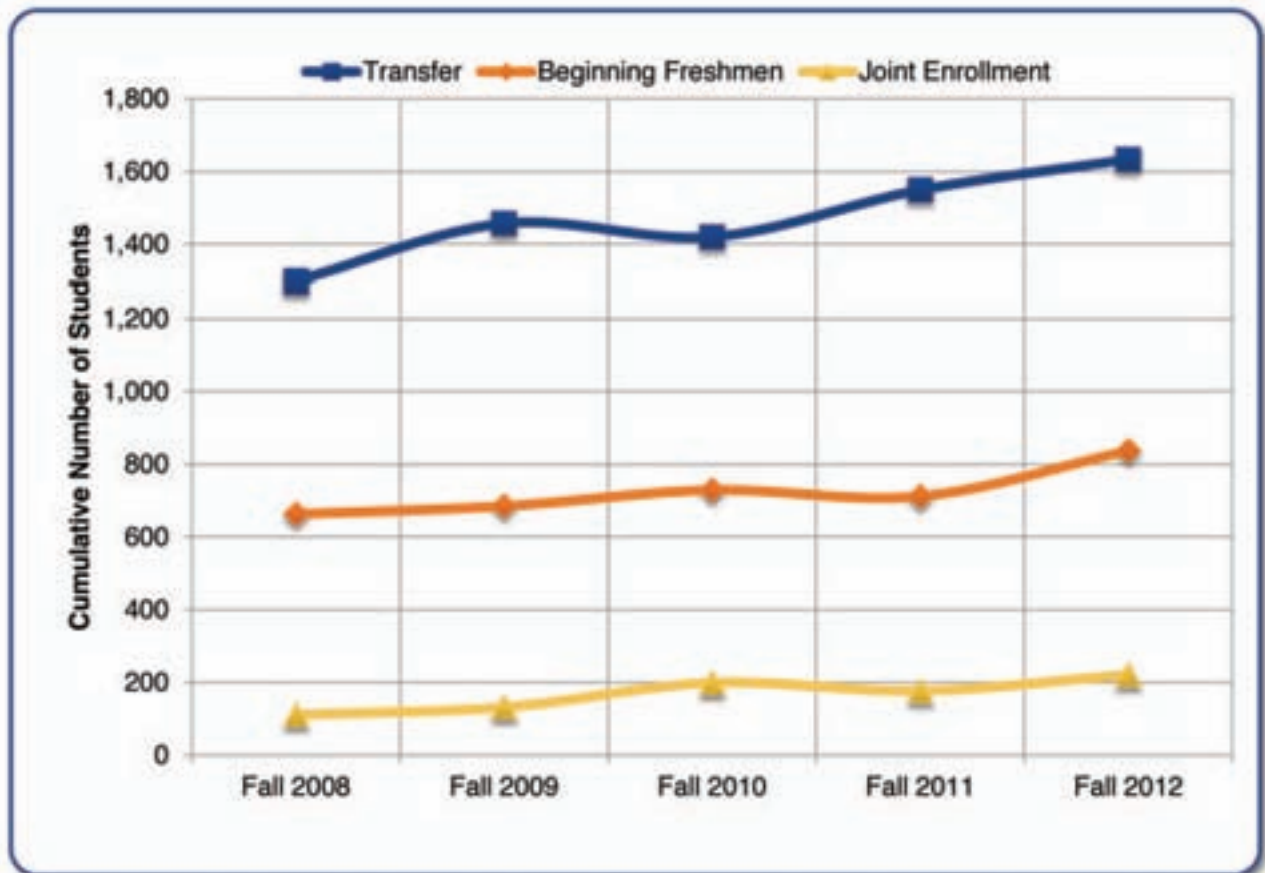
Term	FY 2009	FY 2010	FY 2011	FY 2012	FY 2013
Summer	548	595	581	602	519
Fall	1,360	1,542	1,535	1,699	1,779
Spring	689	852	804	768	755
<b>Total</b>	<b>2,597</b>	<b>2,989</b>	<b>2,920</b>	<b>3,069</b>	<b>3,053</b>



Source: USG Semester Enrollment Report

## Fall Semesters

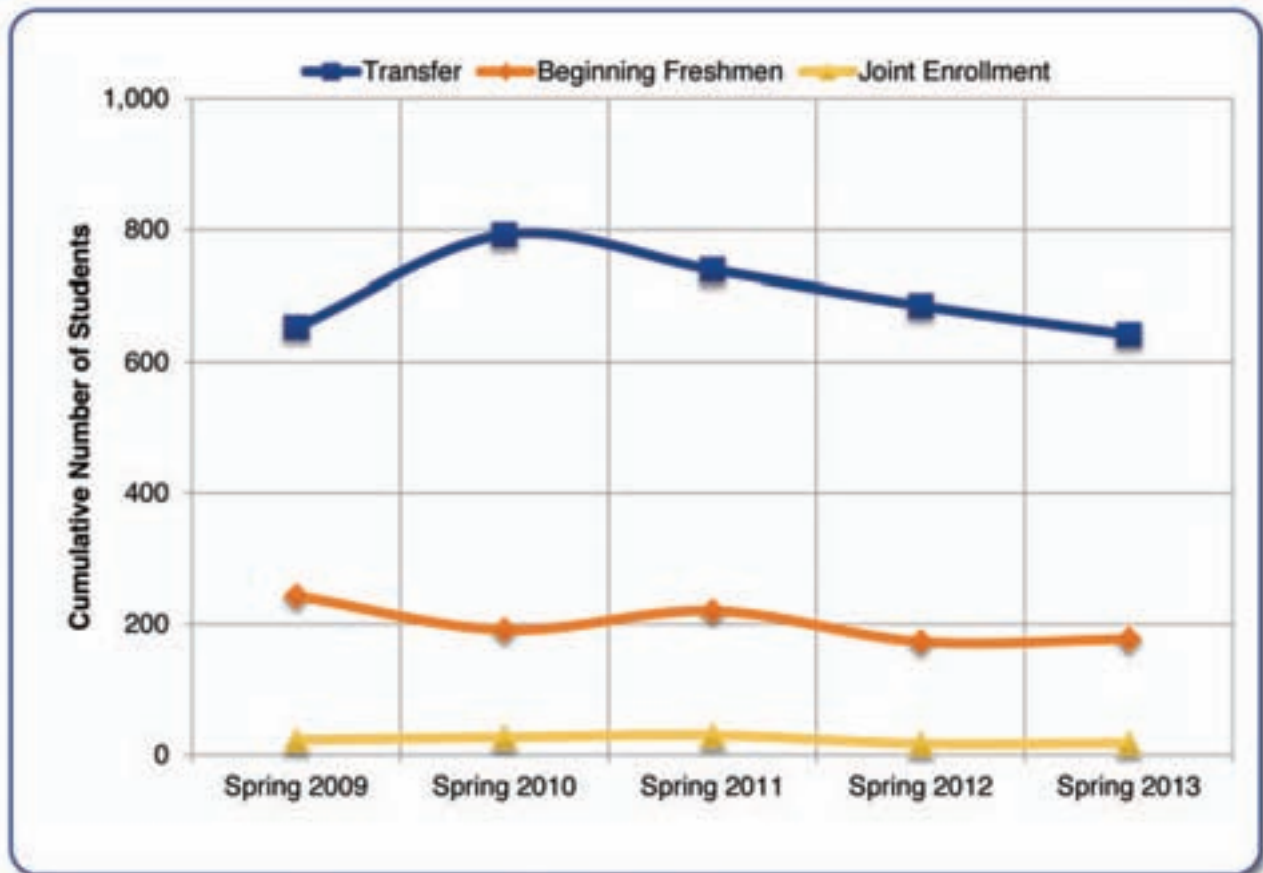
	Fall 2008	Fall 2009	Fall 2010	Fall 2011	Fall 2012
Joint Enrollment	111	132	199	177	221
Beginning Freshmen	552	553	530	535	616
Transfer	637	772	691	837	796
Graduate	51	69	71	114	104
Other	9	16	44	36	42
<b>Total</b>	<b>1,360</b>	<b>1,542</b>	<b>1,535</b>	<b>1,699</b>	<b>1,779</b>



Source: USG Semester Enrollment Report

## Spring Semesters

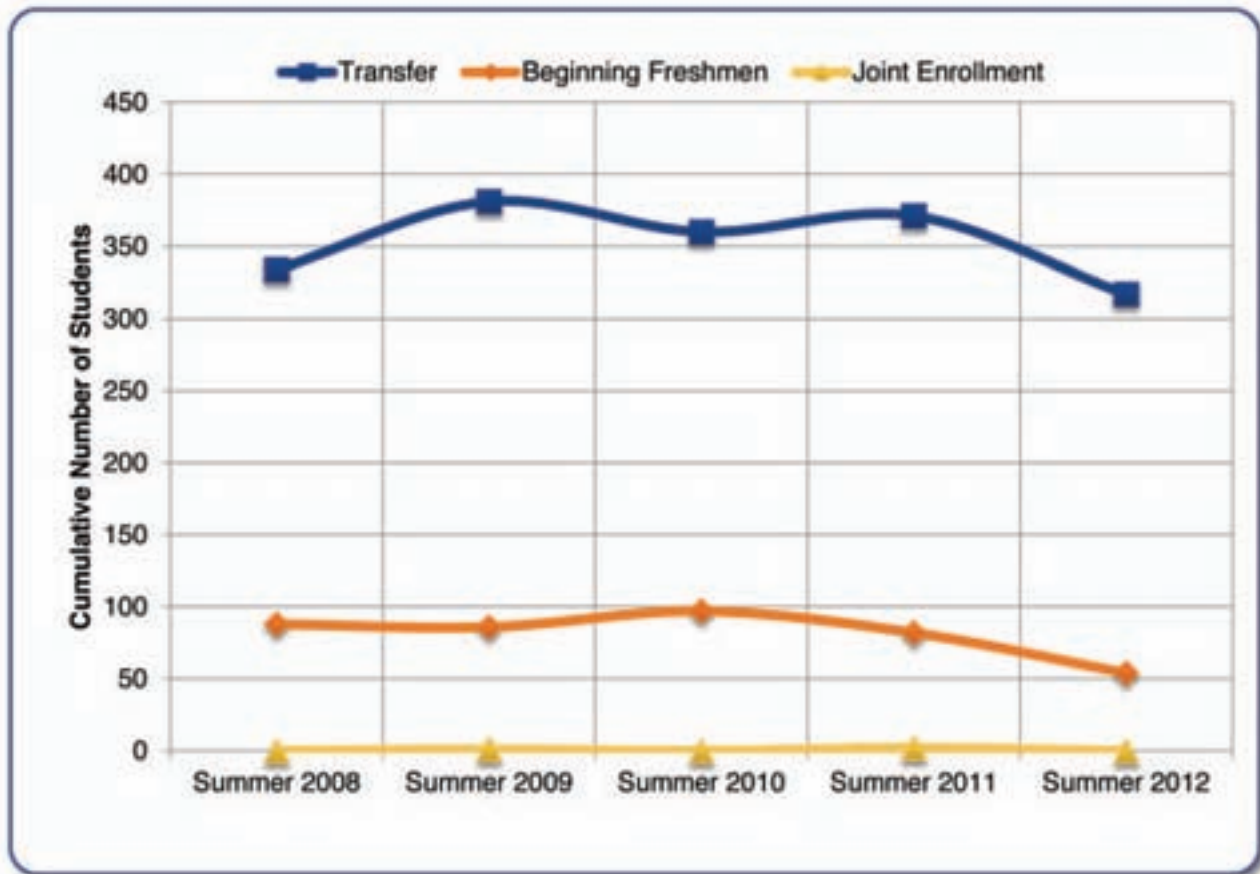
	Spring 2009	Spring 2010	Spring 2011	Spring 2012	Spring 2013
Joint Enrollment	23	27	30	17	18
Beginning Freshmen	220	164	190	156	159
Transfer	410	601	519	513	465
Graduate	25	44	45	46	77
Other	11	16	20	36	36
<b>Total</b>	<b>689</b>	<b>852</b>	<b>804</b>	<b>768</b>	<b>755</b>



Source: USG Semester Enrollment Report

## Summer Semesters

	Summer 2008	Summer 2009	Summer 2010	Summer 2011	Summer 2012
Joint Enrollment	0	1	0	2	0
Beginning Freshmen	88	85	97	80	54
Transfer	246	295	263	289	263
Graduate	4	14	49	18	13
Other	210	200	172	213	189
<b>Total</b>	<b>548</b>	<b>595</b>	<b>581</b>	<b>602</b>	<b>519</b>

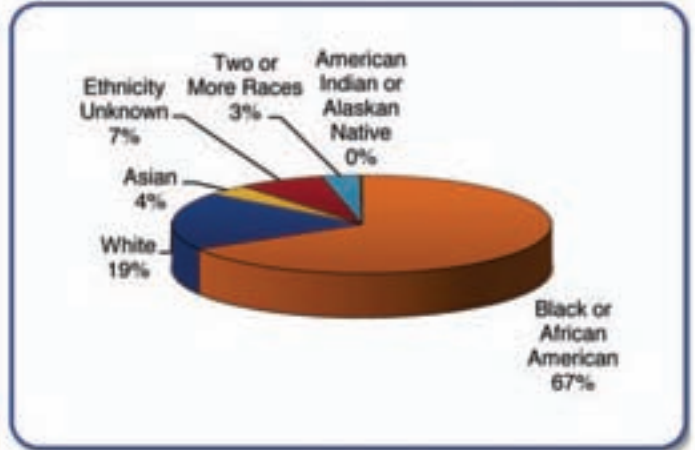
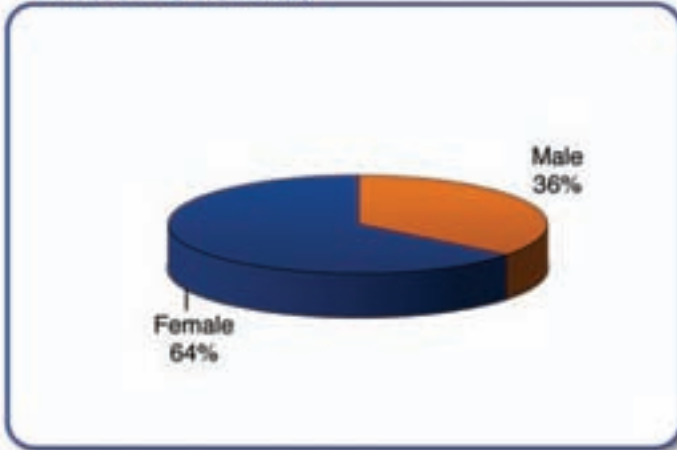


Source: USG Semester Enrollment Report

# First-Time Full-Time Freshmen

## Demographics

### Gender and Ethnicity



### Top Five Feeder High Schools

High School	Number of Students
Morrow High School	17
Forest Park Senior High School	15
Stockbridge High School	14
Lovejoy High School	13
Mundy's Mill High School	12

### Top Five Majors

Major	Number of Students
Pre-BSN (Basic Licensure)	82
Pre-Business	52
Biology	49
Undeclared	44
Psychology & Human Services	34

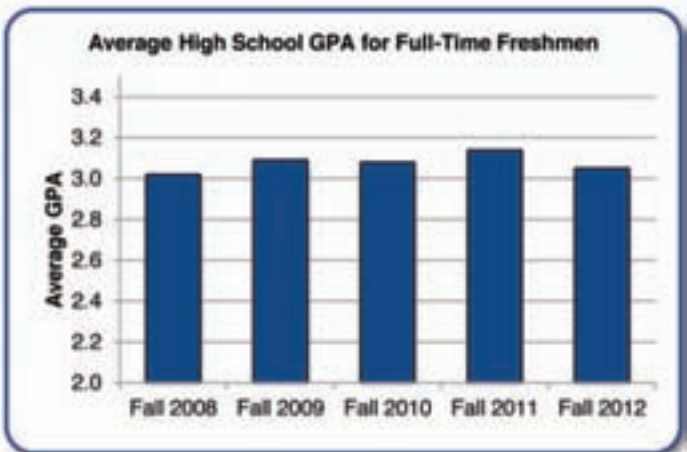
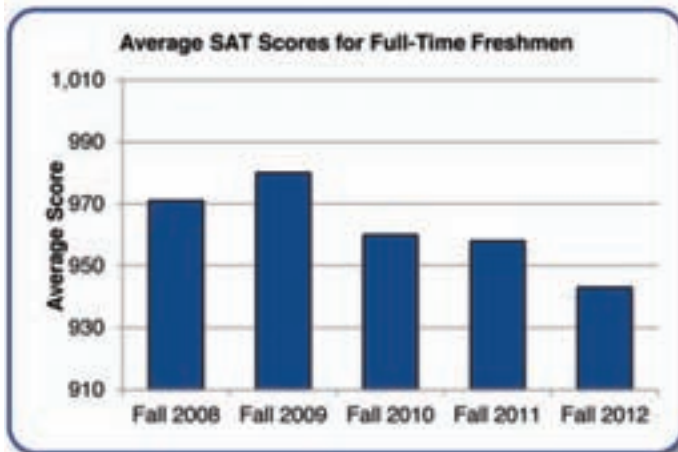
### Top Ten Counties

County	Number of Students
Clayton	126
Henry	68
Fayette	52
Fulton	44
DeKalb	40
Bibb	13
Gwinnett	13
Newton	10
Cobb	8
McDuffie	8

Source(s): USG Data Warehouse, Banner SIS

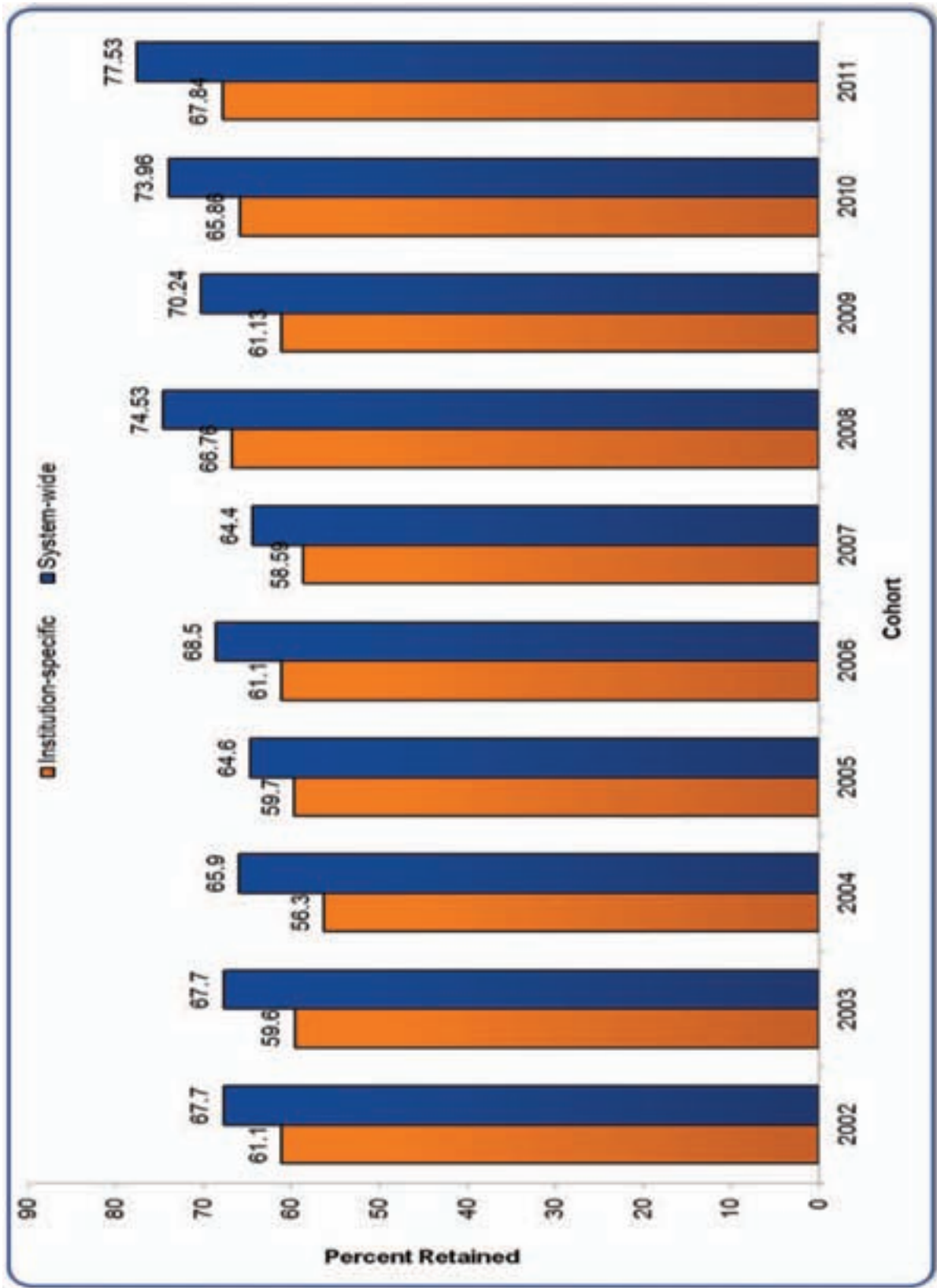
## Test Scores and High School GPAs

	Fall 2008	Fall 2009	Fall 2010	Fall 2011	Fall 2012
<b>ACT Composite</b>					
Number	157	136	151	178	214
Average	20.1	19.8	19.9	19.6	19.5
<b>SAT Total</b>					
Number	283	274	294	298	371
Average	971	980	960	958	943
<b>High School GPA</b>					
3.50-4.00	46	71	67	96	79
3.00-3.49	136	124	125	125	148
2.50-2.99	122	98	118	106	166
2.00-2.49	32	27	21	22	55
<2.00	0	1	0	0	0
<b>Total</b>	<b>336</b>	<b>321</b>	<b>331</b>	<b>349</b>	<b>448</b>
<b>Average</b>	<b>3.02</b>	<b>3.09</b>	<b>3.08</b>	<b>3.14</b>	<b>3.05</b>



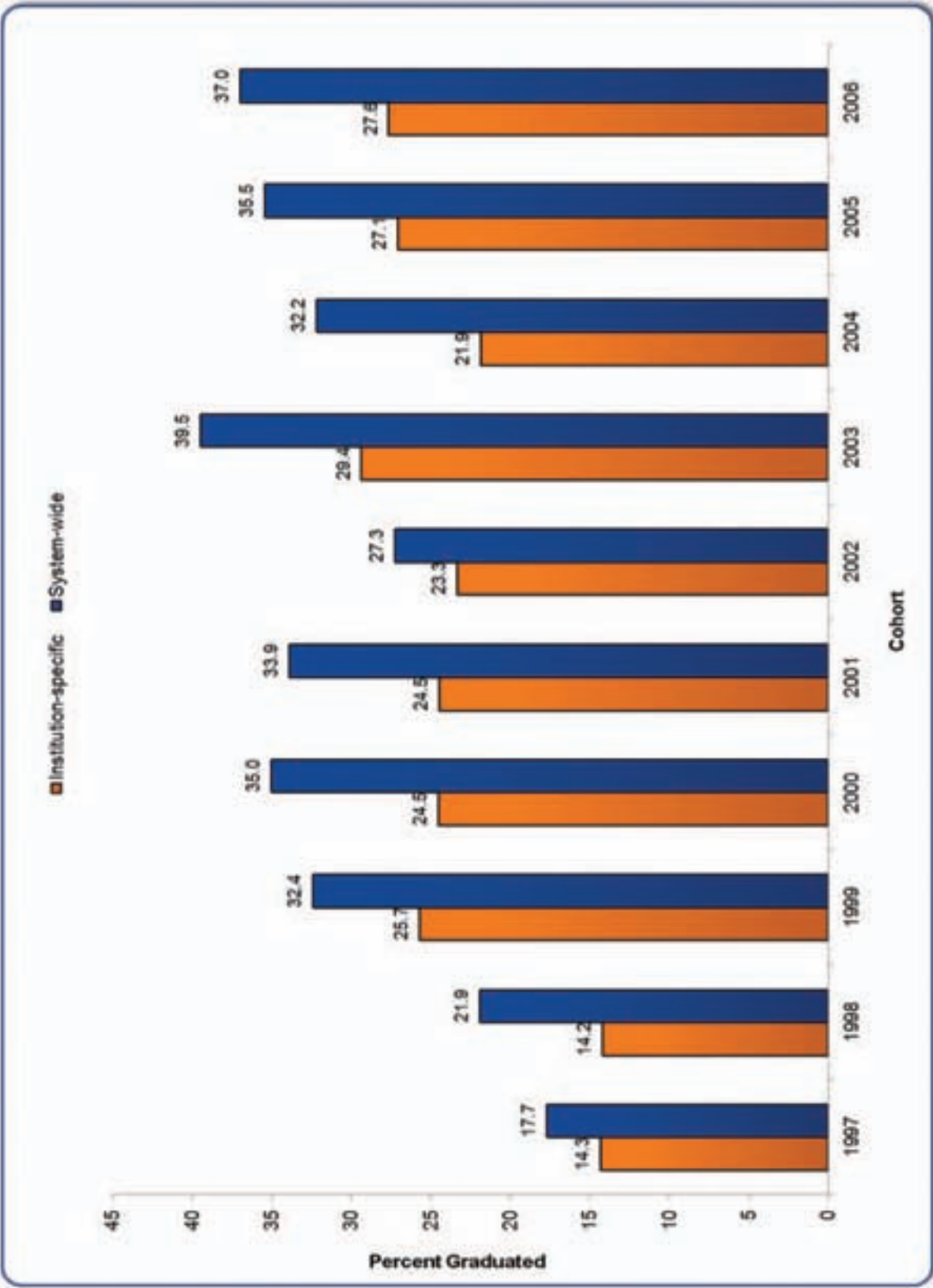
Source: USG Semester Enrollment Report

# One Year Retention Rates





# Six Year Bachelor's Degree Graduation Rates

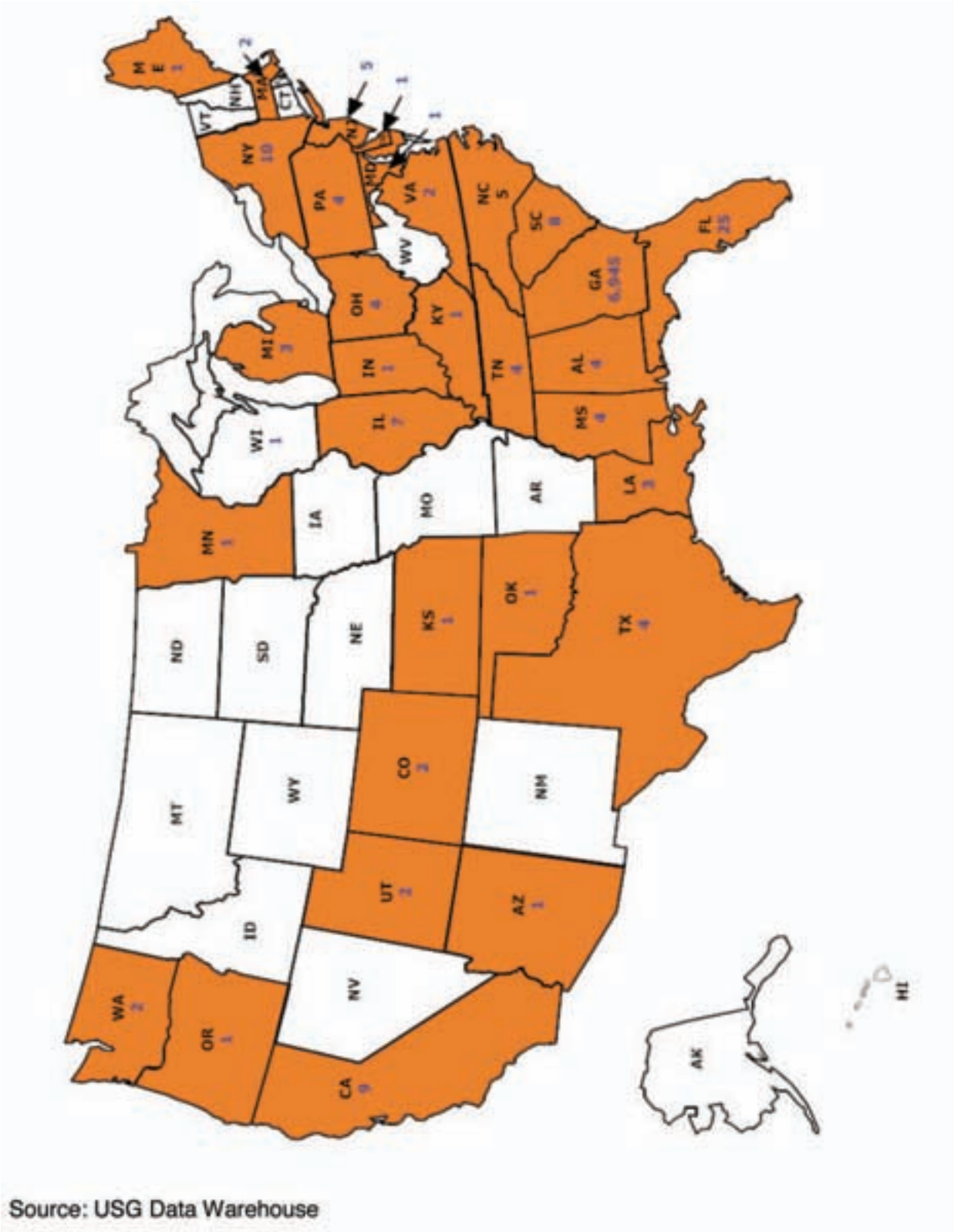


## Fall Enrollment by Georgia County

County	Fall 2008	Fall 2009	Fall 2010	Fall 2011	Fall 2012
Clayton	1,569	1,669	1,573	1,751	1,811
Henry	1,208	1,119	1,317	1,205	1,279
Fulton	699	757	853	856	855
Dekalb	701	745	741	835	785
Fayette	484	510	556	603	619
Rockdale	127	146	141	151	176
Coweta	112	116	150	116	123
Spalding	77	86	79	98	102
Gwinnett	133	120	144	181	195
Newton	69	65	99	109	117
Cobb	96	101	91	107	116
Other	561	477	432	654	672
<b>Total Georgia Residents</b>	<b>5,836</b>	<b>5,911</b>	<b>6,176</b>	<b>6,666</b>	<b>6,850</b>
<b>Out-of-State</b>	<b>238</b>	<b>676</b>	<b>428</b>	<b>194</b>	<b>290</b>
<b>Total Enrollment</b>	<b>6,074</b>	<b>6,587</b>	<b>6,604</b>	<b>6,860</b>	<b>7,140</b>

Source: USG Data Warehouse

# Fall 2012 Enrollment by State



## Fall Enrollment by Country of Origin

---

Country	Fall 2008	Fall 2009	Fall 2010	Fall 2011	Fall 2012
Canada	3	3	4	4	2
India	0	3	0	2	1
Kenya	2	3	3	2	3
Nigeria	5	6	4	3	1
Pakistan	4	2	1	0	1
South Africa	5	7	5	4	3
United Kingdom	8	11	9	9	11
Other	48	62	28	32	38
<b>Total</b>	<b>75</b>	<b>97</b>	<b>54</b>	<b>56</b>	<b>60</b>
<b>Total Countries Represented</b>	<b>35</b>	<b>39</b>	<b>28</b>	<b>30</b>	<b>31</b>

Source: Banner SIS



# Our Faculty



## 2011–12 Full-Time Instructional Faculty

---

*Effective 6/26/2013*

### **COLLEGE OF ARTS & SCIENCES**

#### **Dean**

Nasser Momayezi, PhD, Professor, Tenured

#### **Associate Dean**

John G. Campbell, PhD, Professor, Tenured

#### **Assistant Dean**

R.B. Rosenberg, PhD, Professor, Tenured

### **English**

---

#### **Department Chair**

Barbara Goodman, PhD, Professor, Tenured

#### **Professors**

Gwendolyn Jones-Harold, PhD, Tenured  
John Micheal Crafton, PhD, Tenured  
Provost, Vice President, Academic Affairs

#### **Associate Professors**

Brigette Byrd, PhD, Tenured  
Susan Copeland, PhD, Tenured  
Gregory James Flail, PhD, Tenured  
Gregory McNamara, PhD, Tenured  
Kathryn J. Pratt Russell, PhD, Tenured  
Patricia A. Smith, EdD, Tenured  
Robert A. Vaughan, PhD  
Assoc. Vice President, Academic Affairs

#### **Assistant Professors**

Cantice G. Green, PhD  
Sipai Klein, PhD  
Mary Lamb, PhD  
Eugene Ngezem, PhD  
Robert R. Pfeiffer, PhD  
Amy D. Sanford, PhD

#### **Lecturers**

Benie Colvin, PhD  
Margaret W. Fletcher, PhD  
Debbie S. Lowe, MAT  
Stephen D. Mills, MA  
Mary Ellen Zaglewski, MAT

### **Humanities**

---

#### **Department Chair**

Edward Joe Johnson, PhD, Professor, Tenured

#### **Professors**

Ronald L. Jackson, PhD, Tenured  
Adam Tate, PhD, Tenured  
Director, Honors Program

#### **Associate Professors**

Alexander Hall, PhD, Tenured  
Todd Janke, PhD, Tenured  
Kathryn W. Kemp, PhD, Tenured  
Marko Maunula, PhD, Tenured  
Christopher Ward, PhD, Tenured  
Robert A. Vaughan, PhD

#### **Assistant Professors**

Charles J. Elfer, Sr., PhD

#### **Assistant Professors (cont.)**

David Gilbert, PhD  
Randall S. Gooden, PhD  
Dennis Miller, PhD  
Joseph L. Venosa, PhD  
Maria Vickery, PhD  
Carol L. White, PhD

#### **Lecturers**

Benjamin L. Buckley, PhD  
Aaron A. Dopf, PhD  
John Kevin Dunn, MA  
Roberto E. Gibraltarik, PhD  
Sanjay Lal, PhD

---

## Interdisciplinary Studies

---

### Department Chair

LaJuan E. Simpson, PhD, Associate Professor, Tenured

### Assistant Professor

Shannon M. Cochran, PhD

### Lecturer

Vangela C. Humphries, MA

## Natural Sciences

---

### Department Chair

Michelle Furlong, PhD, Professor, Tenured

### Professors

James R. Braun, PhD, Tenured  
Stephen C. Burnett, PhD, Tenured  
Thomas Eaves, EdD, Tenured  
Tatiana A. Krivosheev, PhD, Tenured

### Associate Professors

Jere Ann Boudell, PhD, Tenured  
Caroline E. Clower, PhD, Tenured  
J. Yvette Gardner, PhD, Tenured  
Susan F. Hornbuckle, PhD, Tenured  
Jacqueline A. Jordan, PhD, Tenured  
Christopher H. Kodani, PhD, Tenured  
Paul Melvin, PhD, Tenured  
Barbara Muslof, PhD, Tenured  
Francine Norflus, PhD, Tenured  
Patricia Todebush, PhD, Tenured

### Assistant Professors

Augustine Agyeman, PhD  
Bram Seth Boroson, PhD  
Samantha Fowler, PhD  
Jonathan Lyon, PhD  
Joshua M. Parker, PhD  
Richard Singiser, PhD

### Senior Lecturers

Harold R. Banke, MEd  
Renee E. McFarlane, MS

### Lecturers

Diane E. Day, PhD  
Michael P. Kirberger, PhD  
Nikki T. Sawyer, ABD

## Psychology

---

### Department Chair

Donna W. McCarty, PhD, Professor, Tenured

### Professors

Catherine G. Deering, PhD, Tenured  
Antoinette R. Miller, PhD, Tenured

### Associate Professors

Eric M. Bridges, PhD, Tenured  
Deborah F. Deckner, PhD, Tenured  
Erica J. Gannon, PhD, Tenured  
Brian Goldman, PhD, Tenured  
Samuel J. Maddox, PhD, Tenured  
Mario Norman, PhD, Tenured  
J. Celeste Walley-Jean, PhD, Tenured

### Assistant Professors

Charlie L. Harris, PhD  
Mark Daddona, PhD  
Assoc. Vice President, Enrollment  
Management and Student Success  
Pinar Gurkas, PhD

### Lecturers

Uma P. Dorn, PhD  
Nichelle Gause, MA

---

## Social Sciences

---

### Department Chair

A. Rafik Mohamed, PhD, Associate Professor, Tenured

### Professors

Rodger Bates, PhD, Professor, Tenured  
Kevin P. Demmitt, PhD, Tenured  
Assoc. Vice President, Extended Programs

### Associate Professors

Augustine Ayuk, PhD, Tenured  
Christie H. Burton, EdD, Tenured  
Matthew S. Cornick, JD  
Joseph Corrado, PhD, Tenured  
Thomas Garsombke, PhD  
Erman Khan, PhD, Tenured  
Mara A. Mooney, JD  
Sheryne M. Southard, JD  
Karen B. Young, PhD, Tenured

### Assistant Professors

James M. Adcock, PhD  
Jason Davis, PhD  
Lisa Holland-Davis, PhD  
Sean Mattie, PhD  
Anastasia Tosouni, PhD

### Senior Lecturers

Virginia Bass, EdS  
Bryan LaBrecque, MBA

### Lecturers

Lawrence K. Menter, JD  
Robert B. Peterson, MA  
Sarah L. Stein, MS

---

## Teacher Education

---

### Department Chair

Ruth Caillouet, PhD, Associate Professor

### Professor

Mary Hollowell, PhD, Tenured

### Associate Professor

David W. Messer, EdD, Tenured

### Assistant Professors

Dennis Attick, PhD  
Erica K. Dotson, PhD  
Shayla Mitchell, PhD  
Mari Ann Roberts, PhD

### Lecturer

Shirley T. Mills, EdS

---

## Visual and Performing Arts

---

### Department Chair

Susan Tusing, PhD, Associate Professor, Tenured

### Professors

Shaun M. Amos, DMA, Tenured  
Thomas J. Hynes, Jr., PhD, Tenured  
President  
Michiko Otaki, DMA, Tenured  
Kurt-Alexander N. Zeller, DMA, Tenured

### Associate Professors

Virginia A. Bonner, PhD, Tenured  
Randall Clark, PhD, Tenured  
Mark May, PhD, Tenured  
Steven A. Spence, PhD, Tenured  
Alan Caomin Xie, MFA, Tenured

### Assistant Professors

Richard E. Bell, DMA  
Jonathan Mark Harris, MFA  
Christina Howell, PhD  
Kathleen M. Kelly, MFA  
Kristin Lyman, PhD  
Susan L. McFarlane-Alvarez, PhD  
Keisha Tassie, PhD  
Shontelle Thrash, MFA  
Mark J. Watson, PhD  
Shawn D. Young, PhD

### Lecturer

Patricia F. Heinritze, MFA



---

## **COLLEGE OF BUSINESS**

### **Dean**

Michael H. Deis, EdD, Professor, Tenured, Interim

## **Law, Economics, Accounting and Finance**

---

### **Department Chair**

Gregory S. Kordecki, MDS, Tenured

### **Professors**

Canchepura Narayanaswamy, PhD, Tenured  
Adel Novin, PhD, Tenured

### **Associate Professors**

Scott Butterfield, PhD, Tenured  
Nikki M. Finlay, PhD, Tenured  
Reza Kheirandish, PhD, Tenured  
Chen-Miao Lin, PhD  
Judith Ogden, JD, Tenured

### **Assistant Professors**

Ali Dadpay, PhD  
Louis Orchard, PhD

### **Lecturer**

Gay Solomon, MA

## **Management, Marketing and Supply Chain Management**

---

### **Department Chair**

Louis F. Jourdan, PhD, Tenured

### **Professors**

James Keebler, PhD  
Gary L. May, PhD, Tenured  
George E. Nakos, DBA, Tenured  
Alphonso Ogbuehi, PhD, Tenured

### **Associate Professors**

Diane Fulton, PhD, Tenured  
David Furman, PhD, Tenured  
Craig Hill, PhD, Tenured  
Margaret Thompson, PhD, Tenured  
Anita Whiting, PhD, Tenured

### **Assistant Professors**

Leon C. Prieto, PhD  
Beverly Wright, PhD

### **Senior Lecturer**

John Mascaritolo, MBA

### **Lecturer**

Ronald Dulaney, MBA

---

## **COLLEGE OF HEALTH**

### **Dean**

Lisa W. Eichelberger, DSN, Professor, Tenured

### **School of Nursing**

---

#### **Department Chair**

Sue Ellen Odom, DSN, Professor, Tenured

#### **Associate Professors**

Susan A. Ashford, PhD  
Jennell P. Charles, PhD, Tenured  
Betty Glenn Lane, PhD, Tenured  
Lynn Stover, DSN  
Susan Walsh, PhD  
Karen E. Weaver, PhD

#### **Assistant Professors**

Katrina R. Barnes, MS  
Debra J. Cody, PhD  
Victoria Foster, PhD  
Jennifer K. Lawson, MSN  
Misi Grace Nteff, DNP  
Sharon Jane Shaw, MS

#### **Assistant Professors (cont.)**

Terri Summers, PhD  
Charolette E. Swint, DNP  
Deonna Tanner, MSN  
Isadora E. Weir, MN

#### **Instructors**

Nancy Capponi, MSN  
Elicia S. Collins, MSN  
Han Ngoc Dong, MSN  
Emily Kilburg, MSN  
Pamela B. Roberson, MS  
Judith Ruvalcaba, MSN  
Dina Swearngin, MSN  
Keri Varner, MSN

### **Dental Hygiene**

---

#### **Department Chair**

Gail Barnes, Professor, PhD, Tenured

#### **Associate Professor**

Ximena Zornosa, DMD, Tenured

#### **Assistant Professor**

Lois C. Manning-Burke, MHE

#### **Instructor**

Joanna Harris, MS

---

## Health Care Management

---

### Department Chair

Peter G. Fitzpatrick, EdD, Professor, Tenured

### Professors

Thomas McIlwain, PhD

### Associate Professor

Scott Stegall, PhD

### Assistant Professors

Michael E. Dalmat, PhD

Qiu Fang, PhD

Ronald Fuqua, PhD

### Senior Lecturer

Deborah M. Gritzmacher, RN, MS

### Lecturers

Maria K. Butler, MPH

Kendolyn Smith, DPh

Jocelyn L. Steward, MS

Latrina Walden, MHA

## Health and Fitness Management

---

### Associate Professor

Melaine Poudevigne, PhD, Tenured

### Assistant Professor

Chris Pitsikoulis, EdD

---

## **COLLEGE OF INFORMATION AND MATHEMATICAL SCIENCES**

### **Dean**

Lila Roberts, PhD, Professor, Tenured

### **Information Technology**

---

#### **Department Chair**

Byron A. Jeff, PhD, Associate Professor, Tenured, Interim

#### **Professors**

Shakil Aktar, PhD, Tenured  
Muhammad Rahman, PhD, Tenured

#### **Associate Professor**

Junfeng Qu, PhD, Tenured

#### **Assistant Professor**

Ken D. Nguyen, PhD

#### **Senior Lecturers**

Larry D. Booth, MS  
John S. Burningham, DIT

#### **Lecturers**

Mary H. Hudachek-Buswell, MAM  
Sandra Jones, MA

### **Mathematics**

---

#### **Department Chair**

Anthony Giovannitti, PhD, Professor, Tenured

#### **Professors**

Weihu Hong, PhD, Tenured  
Linda E. Nash, PhD, Tenured

#### **Associate Professors**

Christian Barrientos, PhD, Tenured  
Michael Dancs, PhD  
Catherine A. Matos, PhD, Tenured  
Kelli Nipper, PhD, Tenured  
David B. Williams, PhD, Tenured

#### **Assistant Professors**

Scott M. Bailey, PhD  
Keith Driscoll, PhD  
Elliot Krop, PhD  
Tamara Pearson, PhD  
Christopher Raridan, PhD  
Anthony Stinson, PhD

#### **Lecturers**

Bille May, MAT  
Aaron A. Rafter, MAT  
Jelinda Spotorno, MS  
Patrick Taylor, PhD

### **Archival Studies**

---

Richard Pearce Moses, MS, Assistant Professor

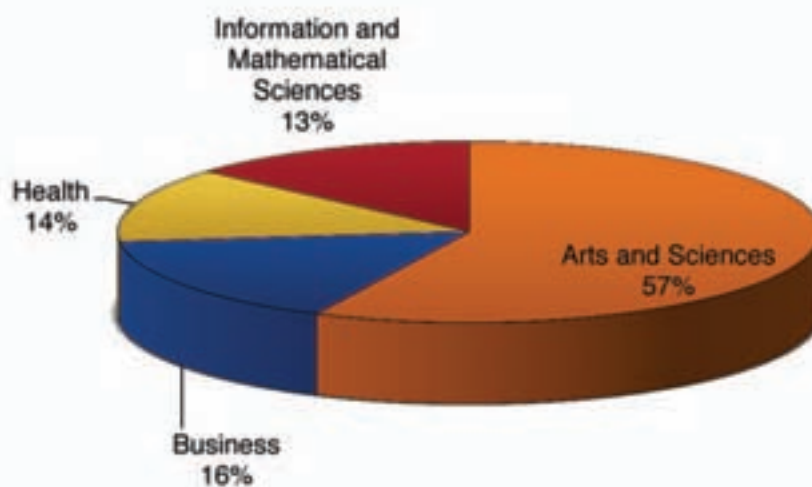
Source: Office of the Provost & Vice President for Academic Affairs, Clayton State University

## Fall 2012 Full-Time Instructional Faculty

### By College

College/School	Total Faculty	% Tenured	% Female	% Male	% Minority
Arts and Sciences	128	28.1	50.8	49.2	23.4
Business	36	50.0	36.1	63.9	19.4
Health	30	20.0	100.0	0.0	20.0
Information and Mathematical Sciences	30	36.7	30.0	70.0	26.7
<b>Total</b>	<b>224</b>	<b>43.8</b>	<b>52.2</b>	<b>47.8</b>	<b>22.8</b>

### Fall 2012 Clayton State Faculty

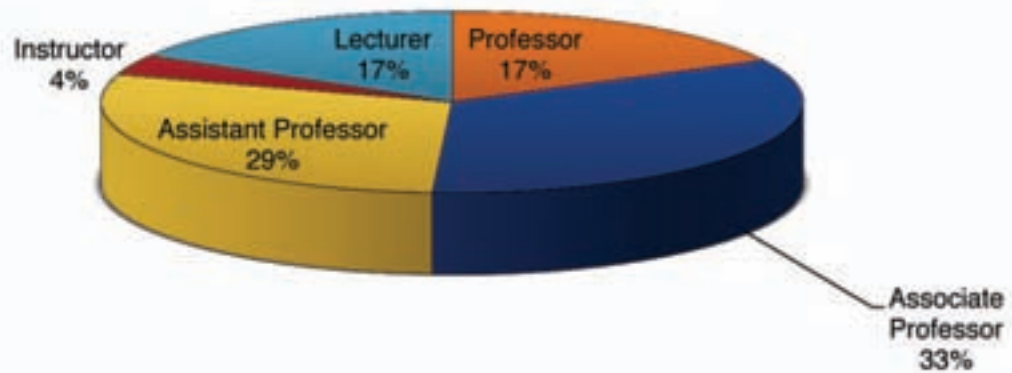


Source: Office of the Provost & Vice President for Academic Affairs, Clayton State University

## By Rank

College/School	Professor		Associate Professor		Assistant Professor		Instructor		Lecturer		Total	
	#	%	#	%	#	%	#	%	#	%	#	%
Arts & Sciences	21	16.4	48	37.5	39	30.5	0	0.0	20	15.6	128	57.1
Business	10	27.8	12	33.3	7	19.4	0	0.0	7	19.4	36	16.1
Health	2	6.7	8	26.7	11	36.7	8	26.7	1	3.3	30	13.4
Information and Mathematical Sciences	6	20.0	7	23.3	8	26.7	0	0.0	9	30.0	30	13.4
<b>Total</b>	<b>39</b>	<b>17.4</b>	<b>75</b>	<b>33.5</b>	<b>65</b>	<b>29.0</b>	<b>8</b>	<b>3.6</b>	<b>37</b>	<b>16.5</b>	<b>224</b>	<b>100.0</b>

### Fall 2012 Clayton State Faculty

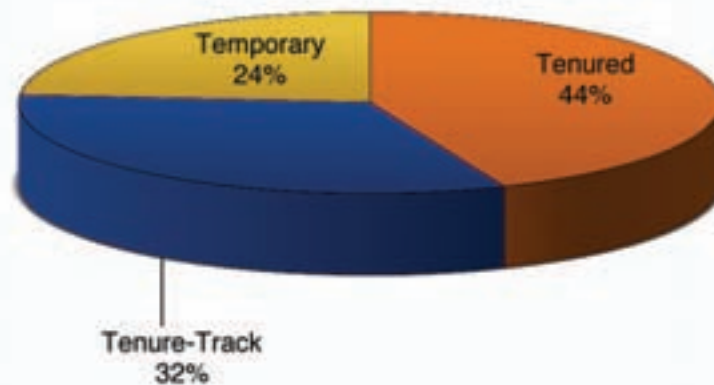


Source: Office of the Provost & Vice President for Academic Affairs, Clayton State University

## By Tenure Status

College/School	Tenured		Tenure-Track		Temporary		Total	
	#	%	#	%	#	%	#	%
Arts and Sciences	63	49.2	45	35.2	20	15.6	128	57.1
Business	18	50.0	11	30.6	7	19.4	36	16.1
Health	6	20.0	7	23.3	17	56.7	30	13.4
Information and Mathematical Sciences	11	36.7	10	33.3	9	30.0	30	13.4
<b>Total</b>	<b>98</b>	<b>43.8</b>	<b>73</b>	<b>32.6</b>	<b>53</b>	<b>23.7</b>	<b>224</b>	<b>100.0</b>

### Fall 2012 Clayton State Faculty



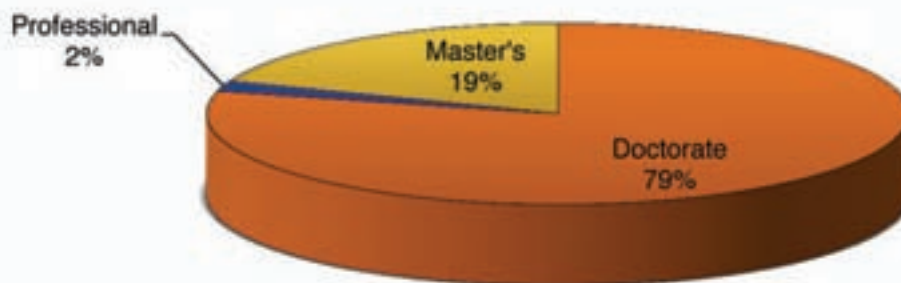
Source: Office of the Provost & Vice President for Academic Affairs, Clayton State University

---

## By Highest Degree

College/School	Doctorate	Professional	Master's	Total
Arts and Sciences	113	4	11	128
Business	29	0	7	36
Health	14	0	16	30
Information and Mathematical Sciences	21	0	9	30
<b>Total</b>	<b>177</b>	<b>4</b>	<b>43</b>	<b>224</b>

### Fall 2012 Clayton State Faculty



Source: Office of the Provost & Vice President for Academic Affairs, Clayton State University



# Graduate Faculty

---

## School of Graduate Studies Dean

---

Robert Vaughan, PhD

## Graduate Program Directors

---

Ruth R. Caillouet, Master of Arts in Teaching English  
Ali Dadpay, Master of Business Administration  
Deborah F. Deckner, Master of Science in Psychology  
Victoria Foster, Master of Science in Nursing  
Thomas McIlwain, Master of Health Administration  
Linda E. Nash, Master of Arts in Teaching  
Mathematics

Richard Pearce-Moses, Master of Archival Studies  
Mari Ann Roberts, Master of Arts in Teaching  
R.B. Rosenburg, Master of Arts in Liberal Studies  
Patricia A. Smith, Master of Arts in Teaching  
Mathematics

## Graduate Faculty

---

Susan A. Ashford, Associate Professor of Nursing  
Dennis G. Attick, Assistant Professor of Teacher  
Education  
Augustine E. Ayuk, Associate Professor of Political  
Science  
Scott Bailey, Assistant Professor of Mathematics  
Ronald S. Barden, Distinguished Visiting Professor  
of Accounting  
Christian Barrientos, Associate Professor of  
Mathematics  
Rodger A. Bates, Professor of Sociology  
Virginia Bonner, Associate Professor of Film and  
Media Studies  
Jere A. Boudell, Associate Professor of Biology  
Eric M. Bridges, Associate Professor of Psychology  
Benjamin L. Buckley, Lecturer of Philosophy  
Stephen C. Burnett, Professor of Biology  
Scott Butterfield, Associate Professor of Accounting  
Brigitte F. Byrd, Associate Professor of English  
Christina M. Camp, Assistant Professor of  
Psychology  
John G. Campbell, Associate Dean of the College of  
Arts and Sciences and Professor of Physics  
Jennell Charles, Associate Professor of Nursing  
A. Randall Clark, Associate Professor of Journalism  
Shannon M. Cochran, Assistant Professor of  
Interdisciplinary Studies and English  
Debra J. Cody, Clinical Assistant Professor of  
Nursing  
Susan C. Copeland, Associate Professor of English  
Joseph Andrew Corrado, Associate Professor of  
Political Science

Michael Dalmat, Assistant Professor of Health Care  
Management  
Michael Dancs, Associate Professor of Mathematics  
Catherine Deering, Professor of Psychology  
Michael H. Deis, Professor of Management  
Erica K. Dotson, Assistant Professor of Education  
Thomas Eaves, Professor of Education  
Lisa Wright Eichelberger, Dean of College of Health  
and Professor of Nursing  
Nikki M. Finlay, Associate Professor of Economics  
Peter G. Fitzpatrick, Professor of Health Care  
Management  
Victoria Foster, Assistant Professor of Nursing  
Samantha R. Fowler, Assistant Professor of Biology  
Diane J. Fulton, Associate Professor of Business  
Ronald M. Fuqua, Assistant Professor of Health Care  
Management  
Michelle A. Furlong, Professor of Biology  
David Furman, Professor of Marketing  
Erica J. Gannon, Associate Professor of Psychology  
David Gilbert, Assistant Professor of History  
Anthony Giovannitti, Professor of Mathematics  
Brian M. Goldman, Associate Professor of  
Psychology  
Barbara Goodman, Professor of English  
Pinar Gurkas, Assistant Professor of Psychology  
Alexander Hall, Associate Professor of Philosophy  
Gwendolyn Jones-Harold, Professor of English  
Charlie L. Harris, Assistant Professor of Psychology  
Craig A. Hill, Associate Professor of Supply Chain  
Management

---

Lisa D. Holland-Davis, Assistant Professor of Criminal Justice  
Mary Nix Hollowell, Professor of Education  
Weihsu Hong, Professor of Mathematics  
Ronald L. Jackson, Professor of Philosophy  
Edward Joe Johnson, Professor of Foreign Languages  
Louis F. Jourdan, Jr., Professor of Management  
James S. Keebler, Conklin Chair/Eminent Scholar and Professor of Logistics and Supply Chain Management  
Emran W. Khan, Associate Professor of Criminal Justice  
Reza Kheirandish, Associate Professor of Economics  
Sipai Klein, Assistant Professor of English and Director of Writers Studio  
Elliot J. Krop, Assistant Professor of Mathematics  
Mary R. Lamb, Assistant Professor of English and Director of First Year Writing  
Betty Glenn Lane, Associate Professor of Nursing  
Chen-Miao Lin, Associate Professor of Finance  
Samuel J. Maddox, Associate Professor of Psychology  
Sean Mattie, Assistant Professor of Political Science  
Marko Maunula, Associate Professor of History  
Gary L. May, Professor of Management  
Donna W. McCarty, Professor of Psychology  
Gregory V. McNamara, Associate Professor of English  
Lawrence Menter, Lecturer of Legal Studies  
Antoinette R. Miller, Professor of Psychology  
Shayla L. Mitchell, Assistant Professor of Education  
A. Rafik Mohamed, Associate Professor of Sociology and Criminology  
Nasser Momayezi, Professor of Political Science  
George E. Nakos, Professor of Marketing  
C.R. Narayanaswamy, Professor of Finance and Economics  
Eugene Ngezem, Assistant Professor of English  
Ken D. Nguyen, Assistant Professor of Information Technology  
Kelli L. Nipper, Associate Professor of Mathematics  
Francine N. Norflus, Associate Professor of Biology

Mario V. Norman, Associate Professor of Psychology  
Adel M. Novin, Professor of Accounting  
M. Grace Nteff, Assistant Professor of Nursing  
Sue Ellen Odom, Professor of Nursing  
Alphonso O. Ogbuehi, Professor of Business  
Judith Ogden, Associate Professor of Business Law and Taxation  
Louis (Lou) Xavier Orchard, Assistant Professor of Accounting  
Melanie Poudevigne, Professor of Health Fitness Management  
Junfeng Qu, Associate Professor of Information Technology  
Christopher P. Raridan, Assistant Professor of Mathematics  
Lila F. Roberts, Professor of Mathematics  
Kathryn J. Pratt Russell, Associate Professor of English  
LaJuan E. Simpson, Associate Professor of English  
Steven A. Spence, Associate Professor of English and Media Studies  
Michiel Scott Stegall, Associate Professor of Health Care Management  
Anthony B. Stinson, Assistant Professor of Mathematics Education  
Lynn Stover, Associate Professor of Nursing  
Terri Williams Summers, Assistant Professor of Nursing  
Charlotte Swint, Assistant Professor of Nursing  
Deonna Tanner, Assistant Professor of Nursing  
Adam Tate, Professor of History  
Margaret A. Thompson, Associate Professor of Management  
Patricia Todebush, Associate Professor of Chemistry  
Susan Tusing, Associate Professor of Music  
J. Celeste Walley-Jean, Associate Professor Psychology and Director, Integrative Studies  
Susan A. Walsh, Associate Professor of Nursing  
Christopher J. Ward, Associate Professor of History  
Anita H. Whiting, Associate Professor of Business  
David B. Williams, Associate Professor of Mathematics  
Beverly Wright, Assistant Professor of Marketing  
Shawn Young,

Source: School of Graduate Studies, Clayton State University

# Instructional Faculty Committee Memberships

---

## 2012 – 2013

### Faculty Senate

---

Scott Butterfield  
Jennell Charles  
Randall Gooden  
Todd Janke  
James Keebler

Kathryn Kemp  
Barbara Musolf  
Ken Nguyen  
Muhammad Rahman  
Terri Summers

J. Celeste Walley-Jean  
David Williams  
Ximena Zornosa

### Undergraduate Curriculum Committee

---

#### (Subcouncil of Faculty Senate)

Scott Bailey  
Christian Barrientos  
David Furman  
Randall Gooden  
Charlie Harris

Joanna Harris  
Susan Hornbuckle  
Kathryn Kemp  
Tatiana Krivosheev  
Mary Lamb

Mara Mooney  
George Nakos  
Christopher Raridan  
Dina Swearngin

### Academic Policy Committee

---

#### (Subcouncil of Faculty Senate)

Scott Butterfield  
Debra Cody  
Pinar Gurkas

Lisa Holland-Davis  
Anthony Stinson  
Terri Summers

### Faculty Affairs Committee

---

#### (Subcommittee of the Provost's Office)

Victoria Foster  
Craig Hill  
Emran Khan  
Barbara Musolf

Richard Pearce-Moses  
Muhammad Rahman  
Keisha Tassie

### Student Affairs Committee

---

#### (Subcommittee of the Provost's Office)

Augustine Ayuk  
Scott Bailey  
Jennell Charles  
Dennis Miller

Scott Stegall  
Lynn Stover  
J. Celeste Walley-Jean

### University Promotions and Tenure Committee

---

Rodger Bates  
James Braun  
Stephen Burnett

Lou Jourdan  
Linda Nash  
Michiko Otaki

---

## Faculty Development Committee

---

### (Subcommittee of the Provost's Office)

Nancy Capponi	Jill Lane
Micheal Dancs	Dennis Miller
Reza Kherandish	

## Honor Program Council

---

David Gilbert	Diane Fulton
William Hong	Judith Ruvalcaba
Mario Norman	Adam Tate

## Graduate Council

---

### (Subcommittee of the Provost's Office)

Deborah Deckner	Linda Nash	Patricia Smith
Craig Hill	Alphonso Ogbuehi	Lynn Stover
William Hong	Richard Pearce-Moses	J. Celeste Walley-Jean
Betty Lane	Mari Roberts	
Thomas McIlwain	R.B. Rosenburg	

## Institutional Review Board

---

### (Subcommittee of the Provost's Office)

Melanie Poudevigne	Muhammad Rahman	Michael Dalmat
Erica Dotson	Jennell Charles	Ali Dadpay
Jill Lane	Susan Walsh	Stephen Burnett
Elliot Krop	Misi Grace Nteff	

## University Faculty Smith Award Committee

---

### (Subcommittee of the Provost's Office)

Scott Bailey	Francine Norflus
Victoria Foster	Louis Orchard

Source: Office of the Provost & Vice President for Academic Affairs, Clayton State University



# Our Finances

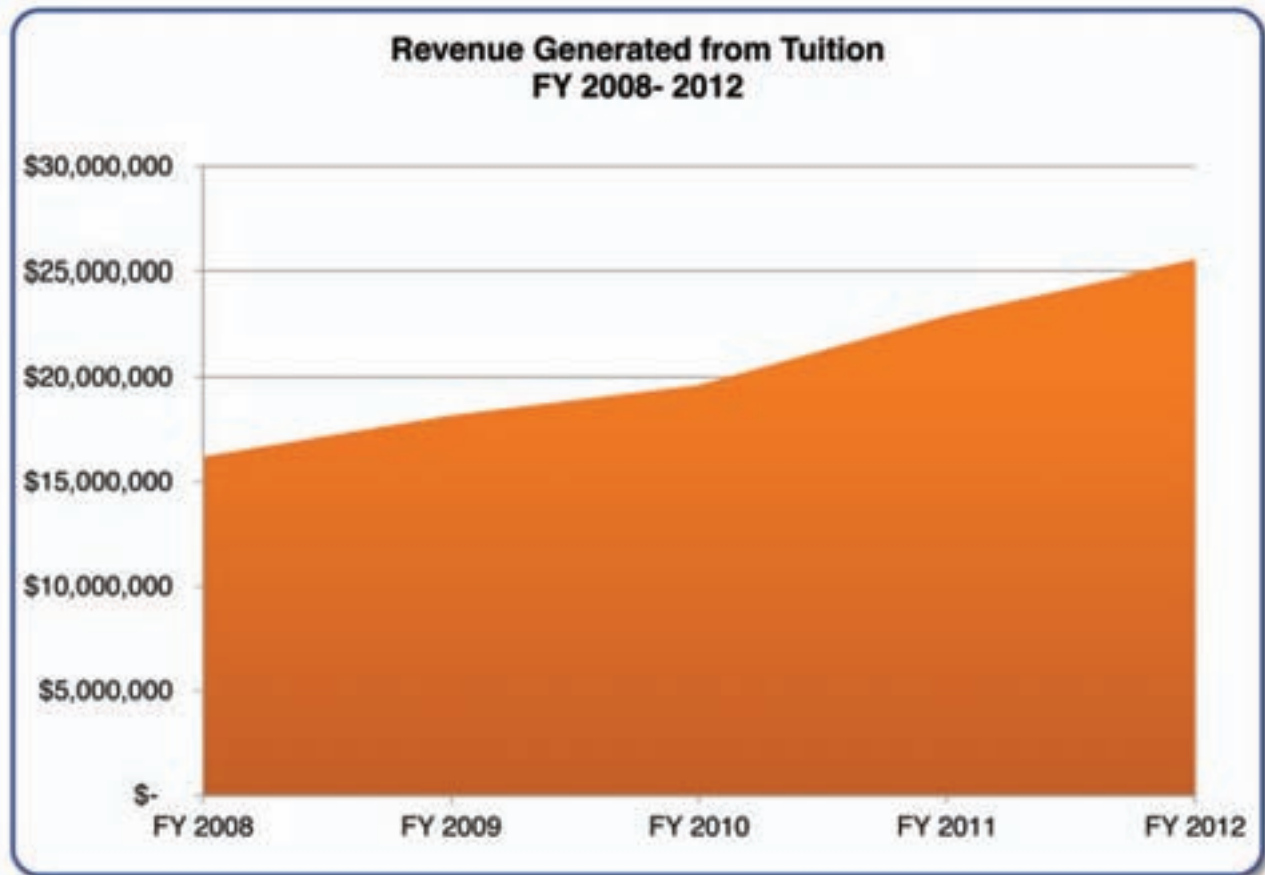


# Tuition Revenue

---

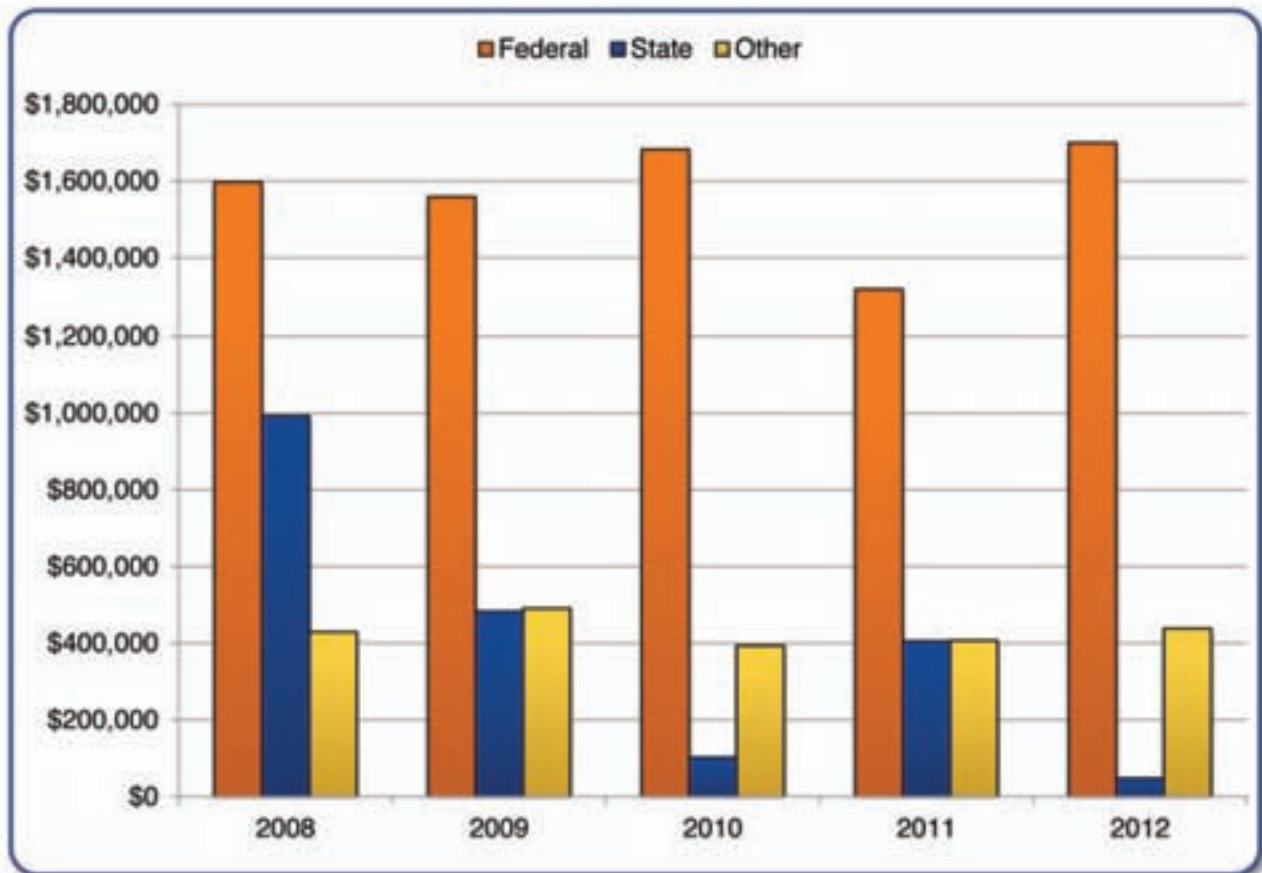
*FY 2008 – 2012*

Fiscal Year	Revenue
2008	\$16,198,028
2009	\$18,171,895
2010	\$19,615,429
2011	\$22,945,975
2012	\$25,539,502



## Grants & Contracts by Type

	2008	2009	2010	2011	2012
Federal	\$1,597,598	\$1,559,289	\$1,682,656	\$1,317,854	\$1,699,610
State	\$992,927	\$482,820	\$101,968	\$405,746	\$47,607
Other	\$429,828	\$490,965	\$393,895	\$407,221	\$438,290
<b>Total</b>	<b>\$3,020,352</b>	<b>\$2,535,083</b>	<b>\$2,178,520</b>	<b>\$2,130,821</b>	<b>\$2,185,507</b>



## Education and General Fund Expenditures by Function

Function of Expenditures	FY 2008		FY 2009		FY 2010		FY 2011		FY 2012	
		%		%		%		%		%
Instruction	\$21,317,827	43%	\$25,037,329	47%	\$27,218,900	45%	\$29,006,935	42%	\$32,628,765	53%
Research	\$19,957	0%	\$20,634	0%	\$9,869	0%	\$13,689	0%	\$8,788	0%
Public Service	\$704,551	1%	\$730,819	1%	\$869,790	1%	\$848,903	1%	\$844,541	1%
Academic Support	\$8,255,477	17%	\$8,521,498	16%	\$9,144,834	15%	\$10,501,386	15%	\$11,014,258	18%
Student Services	\$4,664,687	9%	\$5,818,111	11%	\$7,184,541	12%	\$8,319,435	12%	\$7,556,589	12%
Institutional Support	\$8,377,625	17%	\$8,013,033	15%	\$8,332,433	14%	\$9,155,955	13%	\$9,331,134	15%
Operation & Maint. of Plant	\$6,018,438	12%	\$5,373,202	10%	\$7,185,535	12%	\$10,550,730	15%	*	*
Unallocated Expenses	\$0	0%	\$0	0%	\$0	0%	\$0	0%	\$0	0%
Total	\$49,358,562	100%	\$53,514,626	100%	\$59,946,302	100%	\$68,367,033	100%	\$61,384,175	100%

\* Due to recent IPEDS reporting changes, the Operation & Maint. of Plant Expenditure for FY 2012 is allocated between other functions





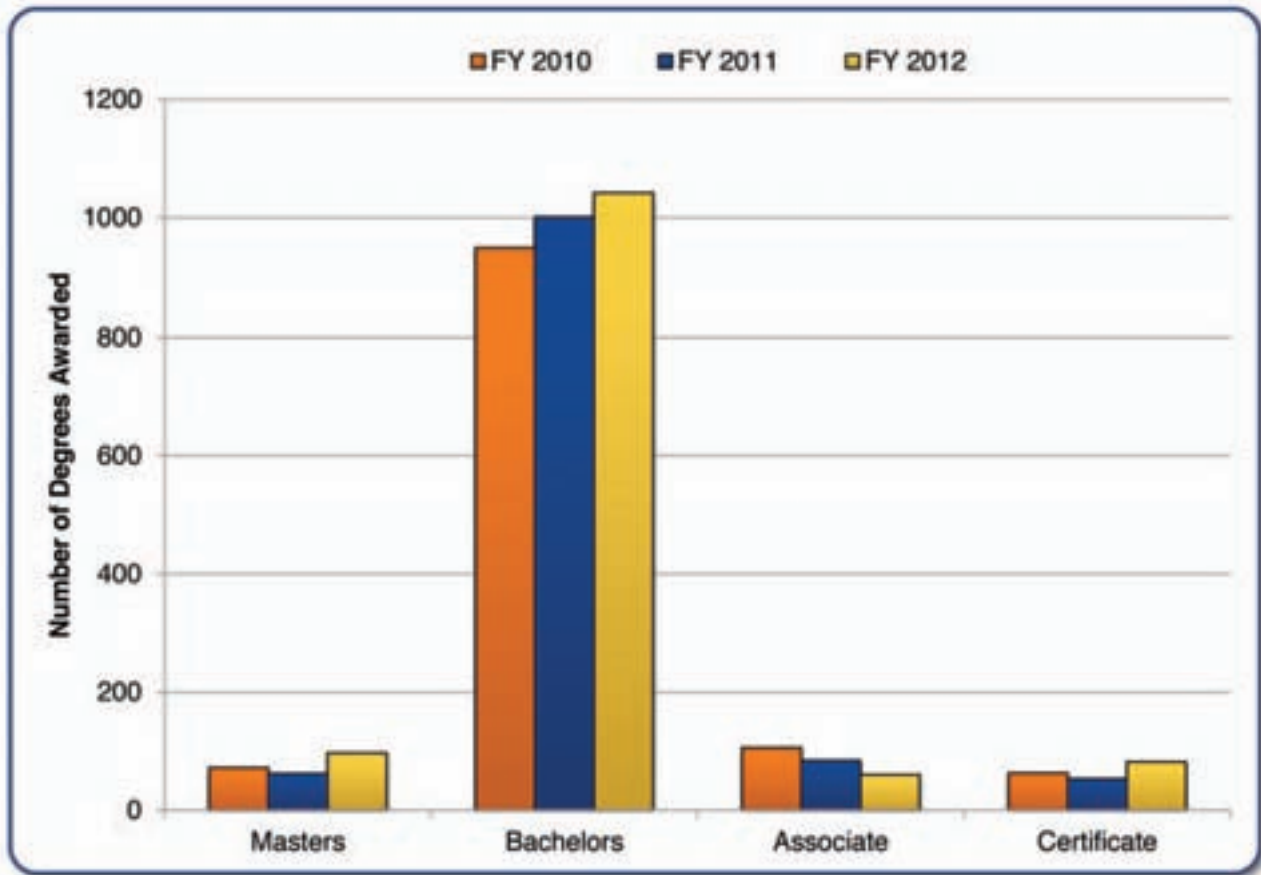
# Our Graduates



## FY 2010 – 2012 Degrees Conferred

### Total Degrees Conferred by Degree Level

	FY 2010	FY 2011	FY 2012
Masters	72	62	97
Bachelors	949	1001	1042
Associate	106	84	60
Certificate	63	53	82
<b>Total Degrees</b>	<b>1,190</b>	<b>1,200</b>	<b>1,281</b>



Source: USG Degrees Conferred

## Degrees Conferred by College and Major

### College of Arts & Sciences

	FY 2010	FY 2011	FY 2012
<b>Masters</b>			
Liberal Studies (MA)	6	8	3
Teaching English (MAT)		6	4
Teaching Mathematics (MAT)		3	5
<b>Total Masters Degrees</b>	<b>6</b>	<b>17</b>	<b>12</b>
<b>Bachelors</b>			
Middle Level Education (BA)	47	48	43
Integrative Studies (BS)	117	153	154
Music (BA; BM)	8	6	5
Biology (BS)	56	31	39
Communication & Media Studies (BA)	17	9	19
Psychology (BS)	102	120	120
History (BA)	16	11	17
Criminal Justice (BS)	64	48	38
Political Science (BS)	17	20	20
English (BA)	18	13	19
Theatre (BA)	5	9	4
Sociology (BS)	2	14	13
Health Fitness Management (BS)	6	6	11
Administrative Management (BAS)	40	37	37
Technology Management (BAS)	23	24	36
Legal Studies (BS; BSPS)		2	15
Chemistry (BS)			2
<b>Total Bachelors Degrees</b>	<b>538</b>	<b>551</b>	<b>592</b>
<b>Associates</b>			
Associate of Arts; Core Curriculum (AACC; ASCC)	23	27	25
Marketing and Merchandising (AASMMT)	6	3	
Paralegal Studies (AASPS)	14	9	9
Medical Assisting (AAS)	12	4	
Office Administration (AASOA)	16	9	5
<b>Total Associates Degrees</b>	<b>71</b>	<b>52</b>	<b>39</b>
<b>Certificate</b>			
Marketing and Merchandising			
Paralegal Studies	34	44	73
Medical Assisting	10	2	
Office Technology/Assistant	9	1	2
<b>Total Certificates</b>	<b>53</b>	<b>47</b>	<b>75</b>
<b>Total Degrees</b>	<b>668</b>	<b>667</b>	<b>718</b>

---

## College of Business

	FY 2010	FY 2011	FY 2012
<b>Masters</b>			
General Business (MBA)	55	38	58
Health Care Administration (MHA)	5	5	21
<b>Total Masters Degrees</b>	<b>60</b>	<b>43</b>	<b>79</b>
<b>Bachelors</b>			
General Business (BBA)	31	21	19
Management (BBA)	69	59	59
Accounting (BBA)	45	37	41
Business Marketing and Marketing Management (BBA)	35	26	19
Health Care Management (BS)	77	105	113
Logistics and Supply Chain Management (BBA)		15	23
<b>Total Bachelors Degrees</b>	<b>257</b>	<b>263</b>	<b>161</b>
<b>Total Degrees</b>	<b>317</b>	<b>306</b>	<b>240</b>

---

*College of Health*

	FY 2010	FY 2011	FY 2012
<b>Masters</b>			
Nursing (MSN)	6	2	5
<b>Total Masters Degrees</b>	<b>6</b>	<b>2</b>	<b>5</b>
<b>Bachelors</b>			
Nursing (BSN; BSNC)	93	125	115
Dental Hygiene (BSDH)	30	25	26
<b>Total Bachelors Degrees</b>	<b>123</b>	<b>150</b>	<b>141</b>
<b>Total Degrees</b>	<b>129</b>	<b>152</b>	<b>146</b>

---

*College of Information and Mathematical Sciences*

	FY 2010	FY 2011	FY 2012
<b>Masters</b>			
Archival Studies (MAS)	6	2	1
<b>Total Masters Degrees</b>	<b>6</b>	<b>2</b>	<b>1</b>
<b>Bachelors</b>			
Information Technology (BIT; BSIT)	26	30	26
Mathematics (MS)	5	7	9
<b>Total Bachelors Degrees</b>	<b>31</b>	<b>37</b>	<b>35</b>
<b>Associates</b>			
Information Technology (AASIT)	17	22	13
Computer Networking Technology (AAS)	18	10	8
<b>Total Associate Degrees</b>	<b>35</b>	<b>32</b>	<b>21</b>
<b>Certificate</b>			
Computer Network Technician	10	6	7
<b>Total Certificate Degrees</b>	<b>10</b>	<b>6</b>	<b>7</b>
<b>Total Degrees</b>	<b>76</b>	<b>75</b>	<b>63</b>

## Survey of Graduating Students

In the spring of 2008, Clayton State began an annual survey of its Bachelors, Associates, and Certificate recipients. The data collected from this survey provides useful information about these students during their time at the University and their plans for the future. The following table is a summary of these findings:

	Spring 2009	Spring 2010	Spring 2011	Spring 2012	Spring 2013
<b># of Respondents</b>	364	444	437	415	157
<b>Age</b>					
Under 21	0.8%	0.5%	0.7%	1.2%	0.6%
21-25	46.7%	51.1%	39.8%	43.9%	38.9%
26-35	31.6%	29.3%	34.1%	33.3%	30.6%
36-55	19.5%	17.6%	24.0%	20.7%	25.5%
Over 55	1.1%	1.6%	1.4%	1.0%	3.8%
<b>Marital Status</b>					
Married	30.5%	25.0%	31.6%	24.1%	28.0%
Single	68.7%	73.6%	67.0%	73.3%	70.7%
<b>Gender</b>					
Male	21.4%	24.3%	26.5%	22.7%	26.8%
Female	76.1%	71.4%	70.5%	75.9%	72.6%
<b>Ethnicity</b>					
Hispanic or Latino Origin		5.0%	3.9%	5.5%	3.8%
<b>Race</b>					
White	34.1%	27.3%	21.5%	20.2%	22.3%
Black or African American	48.9%	57.4%	65.0%	61.7%	60.5%
Asian	6.0%	7.7%	4.1%	5.5%	5.1%
Native Hawaiian or Other Pacific Islander		0.9%			
<b>Degree Type</b>					
Bachelor's	96.7%	94.4%	87.6%	98.3%	90.4%
Associates	2.5%	1.1%	2.1%	1.7%	1.9%
<b>Attended school...</b>					
as a first generation college student	24.2%	25.5%	19.9%	23.9%	25.5%
only at Clayton State	26.9%	30.6%	30.0%	24.3%	22.9%
as a full-time student	83.0%	88.1%	83.8%	85.3%	79.6%
<b>during the...</b>					
daytime	48.9%	50.0%	50.6%	45.3%	42.7%
evening	19.8%	20.7%	20.8%	24.1%	26.1%
<b>Financial Aid</b>					
Received financial aid while attending Clayton State	85.2%	87.8%	89.0%	94.0%	93.6%
<b>Completed a degree in...</b>					
4 years or less (Associates)	36.3%	31.8%	37.3%	35.4%	28.7%
6 years or less (Bachelor's)	82.1%	79.3%	81.0%	83.9%	75.2%

	Spring 2009	Spring 2010	Spring 2011	Spring 2012	Spring 2013
<b>Employed during school</b>					
In a job related to Clayton State major	24.2%	25.2%	24.7%	23.4%	21.7%
<b>Off-Campus...</b>					
Full-Time	37.1%	33.6%	39.8%	39.3%	31.8%
Part-Time	38.2%	37.2%	34.3%	29.2%	20.4%
<b>On-Campus...</b>					
Full-Time	2.2%	2.3%	1.4%	1.9%	2.5%
Part-Time	4.1%	6.5%	4.6%	6.7%	12.1%
<b>After completing their degree plan to...</b>					
Continue working in current job	19.0%	17.3%	21.5%	16.4%	9.6%
Work at a new job	31.9%	34.7%	38.0%	30.6%	35.0%
Look for a new job	25.8%	27.3%	27.5%	32.5%	33.8%
<b>Continue their education</b>					
Additional courses or specialized training	4.9%	6.3%	5.9%	4.8%	8.3%
Another bachelor's degree or certificate	3.8%	4.5%	6.4%	3.6%	1.3%
Masters Degree	61.5%	59.5%	55.4%	60.5%	55.4%
Doctoral Degree	15.1%	18.7%	18.8%	21.4%	21.7%
<b>#1 reason for choosing Clayton State</b>					
Nearby Location	57.7%	55.4%	56.3%	51.6%	36.9%
Low cost of attending	10.4%	11.3%	12.4%	14.2%	12.1%
Good academic reputation	6.9%	7.7%	9.8%	7.5%	7.6%
Good faculty	0.8%	0.9%	1.1%	1.7%	1.3%
Liked the social atmosphere	1.1%	0.5%	1.4%		0.6%
Unable to attend first choice school	3.0%	1.8%	0.7%	3.4%	1.9%
Offered the program I wanted	9.3%	10.1%	7.3%	10.8%	21.0%
Liked the size of the college	1.6%	2.0%	3.2%	2.4%	5.7%
Advice of parents or relatives/friends	1.4%	3.4%	1.4%	2.2%	2.5%
Advice of high school staff	0.0%		0.2%		0.0%
Wanted to be with friends	0.3%		0.2%	0.2%	0.0%
Able to maintain employment	0.8%	0.5%	0.5%	1.0%	0.6%
Offered financial support	0.3%	0.9%	0.9%	1.2%	1.9%
<b>Satisfaction</b>					
Intellectual Growth	87.4%	89.6%	90.4%	90.8%	78.3%
Personal growth	82.1%	85.1%	84.9%	86.5%	73.9%
Acquiring knowledge and skills applicable to a specific job or type of work	76.9%	79.5%	75.3%	76.9%	68.8%
Acquiring the background for further education in some professional, scientific, or scholarly field	84.1%	82.2%	84.4%	83.1%	71.3%
Gaining a broad general education about different fields of knowledge	81.6%	84.2%	82.4%	79.0%	74.5%
Gaining a range of information that may be relevant to a career	85.4%	88.1%	87.6%	87.7%	73.9%
Developing an understanding and enjoyment of art, music and drama	49.7%	56.8%	52.2%	48.7%	47.8%



	Spring 2009	Spring 2010	Spring 2011	Spring 2012	Spring 2013
Broadening acquaintance with and enjoyment of literature	54.4%	62.6%	54.7%	54.0%	54.8%
Writing clearly and effectively	83.5%	85.1%	80.5%	79.0%	74.5%
Learning to use computers	74.2%	72.5%	66.8%	63.1%	60.5%
Becoming aware of different philosophies, cultures and ways of life	73.9%	75.7%	74.1%	71.3%	68.8%
Instruction in chose major	87.4%	90.8%	87.9%	87.0%	77.7%
Faculty-student interaction	80.5%	87.6%	83.8%	82.9%	76.4%
Overall instruction	86.8%	88.3%	87.9%	86.0%	78.3%
Academic advising	74.2%	74.5%	75.3%	75.9%	68.8%
Career guidance and counseling	61.3%	64.9%	66.4%	64.8%	60.5%
Student services	69.5%	70.9%	71.9%	69.9%	64.3%
Food service on campus	45.6%	51.1%	49.4%	46.5%	45.9%
Financial aid services	70.1%	76.8%	73.2%	71.6%	66.9%
Academic support services (e/g. math, reading, and writing labs, tutorial support and remedial courses)	65.7%	69.6%	68.9%	67.5%	68.8%
Registration process	83.5%	86.5%	83.8%	81.9%	77.1%
Campus sponsored recreation activities	56.0%	62.6%	61.8%	58.3%	64.3%
Library services	73.9%	73.4%	74.6%	70.4%	75.2%
Present attitude toward Associate/Bachelor's Degree major	88.5%	90.1%	87.9%	89.9%	77.1%
Overall collegiate experience at Clayton State	83.2%	87.8%	88.3%	87.0%	73.2%



**Clayton State University**  
**2000 Clayton State Boulevard**  
**Morrow, Georgia 30260**

[www.clayton.edu](http://www.clayton.edu)