

# THE BENT TREE

NOVEMBER 27, 1991

CLAYTON STATE COLLEGE

MORROW, GEORGIA

VOLUME XXIII ISSUE 5

## Lakers Rip Soviets 85-82 In Home Opener

### Chappell Leads CSC With 23 Points

by Paul D. Mixon  
Staff Writer

The Clayton State College Lakers mens' basketball team rallied from an eleven point deficit with 6:42 remaining to shock the highly regarded "Team Uzstoy-mekhanizaciya" (Team U.) by an over-

time score of 85-82 on Monday, November 18.

Down 71-60 in the fourth quarter, the Lakers' answered the call with key steals by Dexter Brown, opening up the Lakers' fastbreak opportunities. During the last minutes of the ballgame, the Clayton State Lakers outscored "Team U." 16-4. This run led by key shots by Brown, Bobby Chappell, and Carlos Head, sent the game into overtime with a score of 75-75.

With 55 seconds left in overtime,

Head made a crucial layup which gave the Lakers an 83-82 lead. Barrett Hoard then sealed the victory by making a pair of free throws giving the Lakers a victory by a score of 85-82. "Team U.," who defeated Oglethorpe University 68-66 on November 17, has been on a month-long U.S. tour. The team represents the city of Tashkent, U.S.S.R., and includes team members up to 33 years of age.

A crowd of approximately 400 attended the game, which was the home opener for the Lakers men's basketball team. The program was opened by the CSC Choir's rendition of the "Star Spangled Banner". Members of the teams participated in a gift giving ceremony at mid-court. The Lakers presented their competition with Lakers t-shirts and "Team U." members gave native hats to the Lakers.

The Lakers dominated the first minutes of the game and broke out to a 31-18 lead. This was mainly due to the 23 free throw opportunities the Lakers received during the first half, which seem to result from the aggressive play of "Team U.". However, "Team U." settled down and put together a 19-8 run, to shrink the Lakers lead to 39-37 at half time. (See Home Opener on page 7)

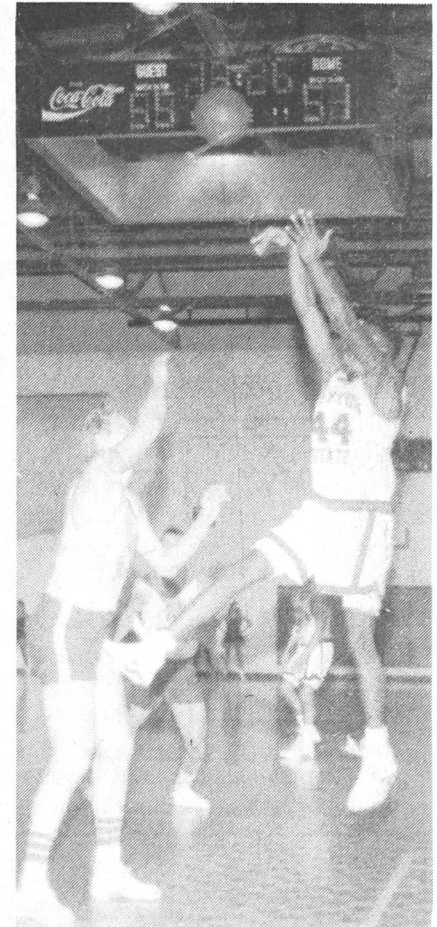


Photo by Donna Burchfield

The Lakers' Bobby Chappell takes aim for a 3-point attempt during the CSC-USSR game on November 18.

## Annual Holiday Ball Set For December 12

### Video Jockey Replaces Live Band This Year

by Allan Hodges  
Staff Writer

The 23rd annual Holiday Ball will be held at the Hyatt Airport Hotel. The Ball will be on Thursday, December 12 from 9:00 p.m. to 1:00 a.m. The hotel is located on Sullivan Road (off Riverdale Road) in College Park. This is the same location as last year.

There is no charge for Clayton State students to attend this event. The cost is covered by the Student Activities Fee. Tickets have been available since November 25 and can be picked up in D-217. They are available from 8:00 a.m. to 6:00 p.m. Monday and Tuesday, and from 8:00 a.m. to 5:00 p.m. Wednesday through Friday. Each ticket will admit a student and a guest. Last year over 600 students, faculty, staff and their guests attended the Holiday Ball, according to Robert J. Taylor, Director of Student Activities.

The entertainment for this year will be different than that of previous years. Instead of having a live band there will be a video dance show. The show is being put on by S & L Sounds of Sanford, North Carolina. The reason for the switch was that several students suggested it. If the video dance show goes over well it will be considered for future Holiday Balls.

S & L Sounds video dance system includes two ten-foot screens, an assortment of light features a multi-speaker sound system. Tim Thomas, of S & L Sounds, has been presenting video dances throughout the southeast for several years. S & L Sounds has put on programs for numerous colleges and universities.

The hotel bar will be open for all persons 21 years of age or older. Alcohol can not be brought in from outside. In the ballroom there will be hot and cold hors d'oeuvres as well as punch served.

The Holiday Ball will be held right after finals. So reward yourself, and let off some steam at the Holiday Ball.

## McElroy Selected As New Vice President For Academic Affairs

Dr. Elliott W. McElroy has been named Vice President for Academic Affairs at Clayton State College, according to Dr. Harry S. Downs, President.

"We are very pleased to have a person within our own academic community who meets the many expectations and requirements for this important position," Dr. Downs said.

"Dr. McElroy has been a strong force in the on-going development of this insti-

tution," the President continued. "In addition to performing his many administrative and teaching duties during the years, he has been a major force in the development and implementation of our unique assessment-based general education curriculum, and also served as chairman of the planning committee for the development and construction of Spivey Hall."

Dr. McElroy had been serving as Vice President on an interim basis since May.

Clayton State College students who transfer actually have very little difficulty with having their hours accepted. This conclusion was drawn from a recent study conducted by the Board of Regents of students who transfer from one University System of Georgia institution to another.

Transferring CSC students will be pleased to learn that of all the schools studied, Clayton State College leads in the percentage of students having all their credits accepted by the receiving institution.

The study was reviewed in a memo-

His appointment to the position on a permanent basis was approved by the Board of Regents of the University System of Georgia during their November 12-13 meeting.

A native of Covington, Georgia, Dr. McElroy came to Clayton State when it was a two-year institution in August, 1973, accepting the position as Chairman of the Division of Humanities. When Clayton (See Vice President on Page 4)

## CSC Students' Transfer Woes Are Unfounded

random written to University System Chancellor H. Dean Propst from Vice Chancellor for Student Services Thomas McDonald. The study related data collected from students transferring from Armstrong State, Augusta, Columbus, Clayton State and Kennesaw State Colleges.

The study results should at last ease the minds of CSC students who are unnecessarily concerned about the transferral of core curriculum credits.

### INSIDE THIS ISSUE

Letter To The Editor: Environmental Tobacco Smoke Issue	2
There's Wisdom In The LSC	3
Fall Quarter Finals Schedule	4
Brown Runs For President Again	4
Spivey Hall December Concerts	5
Budget Crunch Affects Library	6
Halloween Contest Results	6
CSC-USSR Game In Pictures	7
Lakers Beat Piedmont	8
Lady Lakers Beat Agnes Scott	8
Lakers Beat Central Wesleyan	8
Lady Lakers Lose Season Opener	8
Lady Lakers Lose Home Opener	8



## VIEWPOINT

## Letter To The Editor: Environmental Tobacco Smoke Hazards

Dear Editor:

As a student at Clayton State College, I am concerned about the hazards of environmental tobacco smoke at CSC. Last year, I suffered several exacerbations of asthma as a result of being exposed to smoke on campus. My sensitivity to Environmental Tobacco Smoke (ETS) is so severe that smoke which seeped into the classroom from the hall often initiated the asthmatic symptoms.

Because ETS is an immediate threat to my health, I wrote a research paper on the effects of ETS. While doing research for this paper, I learned that ETS has detrimental effects on everyone.

I believe that if students, faculty, and staff are aware of the effects of ETS, they will take a stronger stand against smoking at CSC. Therefore, I would like to share my research paper with the readers of *The Bent Tree* with the hope that they will share their views on ETS.

Thank you for consideration,  
Darlene Vazquez

Passive smoking is the exposure of nonsmokers to tobacco smoke in enclosed

environments. Environmental Tobacco Smoke (ETS) consists of mainstream smoke and sidestream smoke. Mainstream smoke is the smoke that is exhaled by the smoker. Sidestream smoke is smoke released directly into the environment from the lit end of the cigarette.

According to the Environmental Protection Agency (EPA), cigarette smoke contains at least 4,700 compounds, 43 of which are carcinogens (cancer causing). The EPA has recently released a report listing ETS as a Group A (very hazardous) carcinogen.

The effects of passive smoking are now being discovered; through research, experts are realizing the detrimental effects of passive smoke to the human body. Passive smoking has been found to be the third leading preventable cause of death, preceded by direct smoking and alcohol abuse.

Because of the increasing evidence of passive smoke causing harmful effects, many businesses have adopted strict smoking policies. It is time for Clayton State College to examine its smoking policy and update it to meet the needs of all on campus.

## PURPOSE

Second hand smoke is a health hazard to everyone who inhales it. The intent of this paper is to convince readers that the dangers of ETS are too serious to be ignored. The effects of second hand smoke can't be stopped by confining the smoking of cigarettes to the following areas: the upper lobby in the T Building, the north lobby and the south upstairs area in the G Building, half of the lobby in the C Building, the upstairs lobby in the D building, the telephone area in the library, the student lounge, and a reserved section in the cafeteria.<sup>1</sup>

## OBJECTIVE

The best solution is to completely eliminate smoking; however, a policy can be adopted that will protect the nonsmoker while still allowing the smoker to smoke. This policy should provide well ventilated smoking lounges, with doors that are kept shut, in each building where smoking is to be permitted. This policy will accommodate both smoker and nonsmoker.

## DISCUSSION

## CONTENTS OF ETS

Because mainstream smoke is inhaled, its particles are large and deposit in the large airways of the lung. Sidestream smoke comes from the combustion of the burning end of the tobacco product which contains small particles that reach deep into the lungs.

Approximately 85% of ETS is composed of sidestream smoke. Scientists believe sidestream smoke is dirtier than mainstream smoke because of incomplete combustion associated with the lower temperatures of a smoldering cigarette.<sup>2</sup> The particles found in tobacco smoke are made up of several hundred types of chemicals, many of which are toxic. Tar is the condensed form of these particles. Some chemicals in tar are carcinogenic. Other

chemicals in tar are carcinogens. Carcinogens can't cause cancer alone, they must combine with other chemicals to initiate the growth of cancer.

A few of the prominent chemicals found in tobacco smoke are nicotine, benzopyrene, and carbon monoxide. Nicotine is a psychoactive drug and is the chemical responsible for the craving associated with cigarette smoking. Benzopyrene is a carcinogen found in tobacco smoke. Phenols, also present in tar, mixes with benzopyrene to increase the potency of its carcinogenic properties. Carbon monoxide, a poisonous, odorless gas, is one of the main ingredients in tobacco smoke. "When inhaled, this [carbon monoxide] gas displaces oxygen from red blood cells and forms carboxyhemoglobin, a dangerous compound that seriously limits the body's ability to use oxygen."<sup>3</sup>

## EFFECTS OF ETS

The effects of passive smoking are alarming. Dr. Stanton A. Glantz of the University of California at San Francisco estimated that passive smoke killed 50,000 Americans a year, two-thirds of whom died of heart disease.<sup>4</sup>

## HEART DISEASE:

Passive smoke causes platelets, small fragments found in blood that cause clotting, to become stickier. When an artery is clogged with fat, platelets can form on plaques (deposits of fat, cholesterol, and other substances on the inner wall of the arteries) and cause a heart attack. These findings are the result of a study conducted on healthy nonsmokers who sat next to smokers in an open hospital corridor for 20 minutes.<sup>5</sup>

"Researchers have also shown from animal and human studies that chemicals in sidestream smoke may injure cells on See Letter To Editor on Page 3

**Still Wanted!**

Students to fill College committee positions. These include Lyceum, General Entertainment, Student Services and others. For more information, contact Cindy Jones, SGA President, in D-217.

Thanks to all members of the Clayton State community who are helping to make our recycling program a success!

## Earth Friends Environmental Awareness Corner

50% of the nation's paper, 75% of the glass, 40% of the aluminum, and 30% of the total plastics output are used solely to wrap and decorate consumer products.

Be Earth smart--buy in bulk!

**THE BENT TREE**

Staff

Allan Hodges

Paul Mixon

Advisors.....Patricia Armstrong and Rob Taylor

The views expressed in *The Bent Tree* are not necessarily the views of the student body, administration, and faculty of Clayton State College. Signed editorials represent the opinion of the writer and may or may not reflect the opinion of the staff. Unsigned editorials are presumed to reflect the opinion of the staff of *The Bent Tree*.

*The Bent Tree* welcomes opinion and commentary from members of the College community in the form of "Letters to the Editor" or "Freelance Submissions." These submissions should be sent to *The Bent Tree* by depositing them in *The Bent Tree* mailbox in C-57. All submissions should be typed, double-spaced, and are subject to standard editing based on space availability. All "Letters to the Editor" must be signed, but names may be withheld for valid reasons. Unsigned letters will not be published. All submissions should also include the social security number of the person writing the submission (for complete identification purposes). For further definition of "Letter to the Editor" or "Freelance Submission" see the Faculty Advisor of *The Bent Tree*.

*The Bent Tree* is published under the direction of the staff of *The Bent Tree*. *The Bent Tree* is published a minimum of four times per quarter during the fall, winter and spring quarters.



## CAMPUS NEWS

### Letter To Editor (continued from page 2)

the inside lining of the arteries and thus promote development of plaque and arteriosclerosis (an underlying cause of heart attacks).<sup>6</sup>

#### ETS AND CHILDREN:

Unborn babies and children exposed to parental smoke are extremely vulnerable to the adverse effects of ETS. A common effect of ETS is an increase in upper and lower respiratory problems, which sometimes require hospitalization. Furthermore, because the mother spends a lot of time at home with the children there is a greater increase in the number of respiratory illnesses if the mother smokes.

Fathers also contribute to the risks involving children and ETS. An article in *The Atlanta Journal and Constitution* reported that "fathers who smoke have an increased risk of having children with brain cancer and leukemia, suggesting that smoking might have damaged the father's sperm."<sup>7</sup>

In a separate study, researchers discovered the risks of leukemia and lymphoma were 30% higher in children whose mother smoked during pregnancy. The study also indicated unborn children exposed only to their father's had an increased risk of leukemia, lymphoma, and brain cancer.

An Environmental Protection Agency report has concluded that passive smoke is responsible for 3,800 lung cancer deaths per year.<sup>8</sup> Carcinogens in ETS are inhaled into the lungs, where they (carcinogens) begin the initiation or promotion stage of cancer.

There is a significant amount of the time between the initiation and promotion stages, and the actual time a tumor develops. This "latent" period can last as long as 30 years.<sup>9</sup> This latent period is responsible for the delay in the discovery of the effects of tobacco products.

#### OTHER TYPES OF CANCER:

"Researchers have linked cancer of the cervix to both mainstream and sidestream smoke."<sup>10</sup> The following cancers have been linked to mainstream smoke, but not to sidestream smoke: cancer of the mouth, throat, voice box, esophagus, urinary bladder, kidney, pancreas. Cancers of the brain, thyroid, and breast have been linked to sidestream smoke.<sup>11</sup>

Further research is needed to determine why these cancers are caused by sidestream or mainstream smoke and not by both types of ETS.

#### RESPIRATORY FUNCTION:

Chronic second hand exposure to cigarette smoke reduces small-airways function by a significant amount, estimated to be equivalent to that caused by smoking one to ten cigarettes per day.<sup>12</sup>

Exposure to tobacco smoke can cause and/or aggravate allergic attacks in people with respiratory allergies, which may in-

clude coughing, shortness of breath, and wheezing. For asthmatics, passive smoke can lead to serious problems:

Tobacco is basically a poison gas, which paralyzes the lining of the air tubes and prevents them from clearing out normal mucus and the debris that accumulates every day in the lungs. The uncleared mucus becomes extremely thick and may be infected after contact with tobacco smoke. The smoke contains carbon monoxide, which may cause significant pulmonary irritation and can even cause the lungs to collapse.<sup>13</sup>

Secondhand smoke has also been associated with an increased risk of pneumonia and bronchitis.

#### CONCLUSION

It is common knowledge that smoking causes lung cancer in smokers and that pregnant women who smoke have an increased risk of having low birth weight babies. However, because many of the harmful effects of ETS take several years to show up in the human body, the adverse effects of ETS are just now being uncovered. Research has proved ETS is responsible for at least 50,000 American deaths every year. Clayton State College should join the fight against the intrusive effects of passive smoke by adopting a smoking policy that will protect every student, faculty, and staff member against the effects of passive smoke.

#### FOOTNOTES

1 Dean Robert Bolander, Dean of Students, Clayton State College: March, 1991. (telephone interview)

2 Lawrence K. Altman, "The Evidence Mounts on Passive Smoking," *The New York Times* 29 May 1990: C8.

3 Paul M. Insel and Walton T. Roth, *Core Concepts in Health*, 5th ed., (Mountain View: Mayfield, 1988) 197, 206.

4 Ibid.

5 Ibid.

6 Ibid.

7 The Associated Press, "Cancers Tied to Children of Smokers," 24 January 1991: A3.

8 Geoffrey Cowley, "Second Hand Smoke: Some Grim News," *Newsweek* 11 June 1990: 59.

9 Insel, 421.

10 Ibid.

11 Lawrence K. Altman, "The Evidence Mounts on Passive Smoking," *The New York Times* 29 May 1990: C8.

12 J.R. White and H.F. Froeb, "Small-Airways Dysfunction in Nonsmokers Chronically Exposed to Tobacco Smoke," *New England Journal of Medicine* 302 (1980): 721.

13 M. Eric Gershwin, M.D., and E.L. Klingelhofer, Ph.D., *Asthma Stop Suffering, Start Living*, (Reading, Massachusetts: Addison-Wesley, 1986) 70.

## Graduating This June?

Not unless you have applied for graduation!  
Forms to apply for graduation are available in the  
Office of Admissions and Records.  
**LAST CHANCE TO APPLY IS 12/11/91**  
**DO IT NOW!**

## There's Wisdom In The Clayton State Learning Support Center

By David Abrams  
Learning Support Center

When a student comes to the Learning Support Center (LSC) for help in understanding math, one of the first things Don Wisdom does is put his pencil down, resisting the temptation to work the problem for the student.

As mathematics coordinator for the center, Wisdom (yes, that's his real name) sees his primary goal as helping students help themselves.

"If I'm holding the pencil and doing the work, I usually wind up doing the thinking as well, which doesn't help the student," Wisdom said. "The students think: 'this guy's great.' But when they get to the test, there's no one there to hold the pencil for them."

That philosophy permeates the entire Center. Located downstairs in Room L-131 of the Library, the Center's motto is "Learning to Learn." Here, Clayton State College students will find assistance in English, speech, study skills and, of course, math. The Center is open from 8:00 a.m. to 9:30 p.m., Monday through Thursday, and 8 a.m. to 5 p.m. on Friday. No appointment is necessary to use the Center.

A native of Memphis, Tenn., Wisdom came to the LSC in April 1990. He earned his B.S. degree in mathematics from Georgia State University.

He said math help at the Center includes videotapes, audiotapes and computer programs covering everything from basic math all the way through trigonometry and calculus. Assistance is also available in the form of Center personnel who refer to themselves as "facilitators" rather than "tutors."

"Most students think the LSC is a math lab with one-on-one tutoring," Wisdom said. "We do not have any tutors. Instead, we try to support the students while they're learning. Our main emphasis is to get the students to the point where they can learn on their own."

To do that requires a great deal of discipline, drive and determination on the student's part. It means supplementing

the class lectures and textbook assignments by working in the LSC.

"The days of the 'quick fix' are gone," Wisdom said. "Learning is sometimes a difficult thing to do. If it were easy, we'd all be Einsteins."

Wisdom strongly suggest that students come to the LSC for help as soon as they suspect they might be having a problem in their math class. Wisdom also encourages those students who find mathematics courses relatively smooth sailing to come to the Center to simply develop their math skills to a greater degree.

Regardless of the reason, those who do come to the Center are often pleasantly surprised by the wide variety of materials available for study.

The Center has 12 different video series in math, ranging from basic mathematics all the way through statistics and calculus.

"Students can use whatever mode of learning is most comfortable to them," Wisdom said. "When a student comes to me with a problem, I try to do what's in the best interest of the student -- whether that's watching a videotape or working with a computer program. Students should never think I'm trying to brush them off. We never let the student flounder and just work the problem on their own."

Students enrolled in Math 115 will especially want to use the LSC's resources, which include a videotape series and computer with the College Algebra Tutor program.

Those boxed problems in the textbook are on the College Algebra Tutor and students who work the exercises will find out immediately if their answer is correct. Students with incorrect answers are referred to a specific section or example in the textbook for further study.

So, whether you just want to brush up on word problems or are trying to figure out the difference between a logarithm and a log in the woods, the LSC is just the place for you.

To learn more about what the Center has to offer, call 961-3464 or stop by Room L-131 (Lower level of the Clayton State College Library).



## CAMPUS AND NATIONAL NEWS

### Fall Quarter Final Exam Schedule

Friday, December 6

8:00 a.m. - 10:00 a.m. All 7:30 a.m. F or MF or MTWTF; 7:55 a.m. MWF; 8:10 a.m. MWF; 8:50 a.m. TF; 9:45 a.m. F classes

10:30 a.m. - 12:30 p.m. All 12:05 p.m. MWF or MTWF; 12:20 p.m. MTWTF classes

Monday, December 9

8:00 a.m. - 10:00 a.m. All 8:30 a.m. M or MW or MWF or MTWT or MTWTF; 8:50 a.m. MT classes

10:30 a.m. - 12:30 p.m. All 11:00 a.m. W; 11:05 MTWF or M or MF or MW or MWF or MTWF or MTWTF; 11:20 a.m. MTWTF classes

1:00 p.m. - 3:00 p.m. All 1:20 p.m. W or MW classes

3:30 p.m. - 5:30 p.m. All 2:15 p.m. MTWT; 3:45 p.m. MW or Th or TT; 4:00 p.m. MW or W; 4:15 p.m. W; 5:00 p.m. TT or W or M or Th classes

6:00 p.m. - 8:00 p.m. All 6:00 p.m. MW or MTWTF; 6:05 p.m. MTWTF; 6:15 p.m. M or MW classes

Tuesday, December 10

8:00 a.m. - 10:00 a.m. All 7:30 a.m. MTWT or TT; 7:55 a.m. TT; 8:20 a.m. TT; 11:05 TT classes

10:30 a.m. - 12:30 p.m. All 9:45 a.m. TT or TTF; 10:45 Th classes

3:30 p.m. - 5:30 p.m. All 1:20 p.m. MTWT or TT or Tu classes

6:00 p.m. - 8:00 p.m. All 6:00 p.m. TT or T; 6:15 p.m. Th or TT classes

8:30 p.m. - 10:30 p.m. All 8:15 p.m. TT or Th or T classes

Wednesday, December 11

8:00 a.m. - 10:00 a.m. All 7:30 a.m. MW; 8:05 a.m. MW; 8:30 a.m. Th or TT; 9:00 a.m. W classes

10:30 a.m. - 12:30 p.m. All 9:30 a.m. MW or MWF; 9:45 a.m. MTWT or MW or MWF or MTWTF; 11:00 a.m. W classes

1:00 p.m. - 3:30 p.m. All 12:05 p.m. MW; 1:15 p.m. TT or M or MW classes

6:00 p.m. - 8:00 p.m. All 8:15 p.m. M or MW classes

### FOOD DRIVE FOR THE NEEDY

The Black Cultural Awareness Association of CSC is again sponsoring a food drive to benefit needy families in the metro area. Donations of canned and boxed food items are being solicited. Collection boxes are located in A, C, D, G and T buildings. Please bring your donations in by December 11.

### CSC Student Contributes To Book Cover

Recently, Bruce Crosby, a Clayton State College student and sometimes cartoonist for *The Bent Tree*, worked to develop a graphic design used on the cover for a novel. *A Story of Two Wars*, by Clarence T. Nolen, has been published by Blankenship and Walker Printing in Forest Park. Mr. Crosby was acknowledged in the forward of this novel. *The Bent Tree* congratulates Bruce Crosby on this accomplishment.

It's Not Too Late To Start Studying For  
**FINAL EXAMS**

### JOB PLACEMENT AND COOPERATIVE EDUCATION RECRUITMENT SCHEDULE FOR DECEMBER, 1991

December 3 MBNA Marketing Sign-Up in D-208 Telemarketing Representative I  
Services, Inc. (In Advance) \$6.25 Plus Bonus  
All Majors; Flex Hours

### Vice President (continued from page 1)

State converted to four-year status in 1986, he was named Head of the Department of General Studies within the School of Arts and Sciences.

As Vice President for Academic Affairs, Dr. McElroy is the chief academic officer at Clayton State. Among his duties are the evaluation and improvement of the College's general education program, which is focused on defined student learning outcomes and guided by systematic assessment of student performance.

As head of the academic administrative team, he oversees existing degree and certificate programs, as well as the development and evaluation of new baccalaureate and associate degree programs. He manages the academic affairs budget and is involved in recruiting, evaluating, and encouraging the development of faculty. Dr. McElroy holds a Bachelor of Arts degree from Davidson College and a Bachelor of Divinity degree from Columbia Theological Seminary. He received the Doctor of Philosophy degree from the University of Georgia in 1972.

Dr. McElroy and his wife Linda, a Special Education Teacher in the Clayton County School System, have two grown sons and make their home in Jonesboro.



## Brown Makes Another Run For Nation's Top Political Office

By Allan Hodges  
Staff Writer

Former Democratic Governor of California Jerry Brown was in Atlanta last month to promote his presidential campaign. This is Mr. Brown's third attempt at the nation's highest office. He also ran in 1976 and 1980. He spoke at Emory University in a "town meeting" style atmosphere on October 29.

Mr. Brown was governor of California from 1975-1983. According to Mr. Brown, his administration emphasized "innovative technology, protecting the environment, improving the quality of education and expanding the role of minorities and women in government."

Mr. Brown has often been derided as "Governor Moonbeam" for his "new age" attitudes. He spent time studying Zen Buddhism in Japan. He also worked with Mother Teresa in India.

In Mr. Brown's speech at Emory, he referred many times to his concern about PAC's and their influence on our political system. Mr. Brown has pledged not to

take any contributions over 100 dollars. He believes that the way campaigns are financed is at the root of the problem in our political system.

Brown, when quizzed about abortion, said "I don't believe the government and its policemen have any business telling a woman what to do with her body." That line earned him the biggest applause of the evening. He also stressed, however, that it was not an issue to be taken lightly. Mr. Brown was not playing favorites. He blamed his own party (Democrats) as well as the Republicans. He says that the government is run by what he calls the Incumbent party for the system's tendency to reelect incumbents. Mr. Brown blames this on PAC's and special interests.

Mr. Brown calls his campaign "We The People" and refers to his campaign as an insurgent one. One reporter questioned his sincerity about running for president since he couldn't change the system before being elected. Mr. Brown thinks he can get enough grass-roots support to make serious bid. Mr. Brown is bold, if nothing else.



## DECEMBER ATTRACTIONS AT SPIVEY HALL

### Renowned Early Music Group Opens Spivey Hall's Holiday Season

*Herod and The Innocents* will be presented by the Ensemble for Early Music on December 5. This Spivey Hall presentation will begin at 8:15 p.m.

A Spoleto Festival commission and smashing success at the 1988 Spoleto and San Antonio Festivals, *Herod and the Innocents* is a lavishly staged re-telling of

the timeless Christmas story including the Nativity, the journey to Bethlehem, the intrigue of Herod's court, the flight to Egypt and the slaughter of the innocents.

productions of *Herod and the Innocents* and *Daniel and the Lions*, New York's Ensemble for Early Music is firmly established as America's foremost interpreter of medieval music theater. Hailed for its vibrant and innovative style, the ensemble has performed its unique repertory to resounding critical praise on regular tours throughout the United States, Europe, the Orient and the Middle East including engagements at the prestigious Spoleto (Italy and the USA), Edinburgh, Israel, Cracow, Hong Kong and Caramoor Festivals.

For his pioneering work in this genre, Frederick Renz has reaped numerous accolades, including two Producers Grants from the National Endowment for the Arts and commissions from the Cathedral of St. John the Divine and the Spoleto Festival USA.

Ticket prices are \$15 for adults and \$4 for students and senior citizens. CSC students can claim up to two free tickets, if seats are still available. Check with the Spivey Hall ticket office at 961-3683 or by stopping by Spivey Hall in person.



As realized by Frederick Renz's 23-member Ensemble for Early Music, the manuscript from 12th-century France leaps to life as richly evocative musical theater, replete with pageantry, mystery and drama.

With its internationally-acclaimed

### Christmas Program To Be Performed By The Tara Choral Guild

The Tara Choral Guild will present Christmas excerpts from W.F. Handel's *Messiah* on Sunday, December 8. The performance will begin at 3:00 p.m. and will take place in Spivey Hall.

The Tara Choral Guild was founded in 1986. Its membership is comprised of residents from many metro Atlanta counties, particularly those in the Southern Crescent, and includes many

local music educators. Attempting to offer variety in its vocal programming, the Guild has in its repertoire compositions from many musical eras and a variety of musical genres. Under the directorship of Chris Fowler, the group will be presenting choral music of the holiday season.

Ticket prices are \$12 for adults and \$4 for students and senior citizens. CSC student tickets, if available, are free.

### December 10 Concert Features CSC Musicians

The Clayton State College Music Department will shine on December 10, 1991. Italian composer Ottorino Respighi's *Laud to the Nativity* will be presented by the CSC Choir, Camerata and chamber ensembles in an evening of Christmas music and familiar carols at Spivey Hall. The program will begin at 8:15 p.m.

This cantata was composed in the early part of this century and takes its text from a medieval Italian hymn. The

25-minute work features solo singers as the angel announcing the Nativity, a shepherd and the Virgin Mary, while the choir represents angels and shepherds. The singers are accompanied by a colorful ensemble of woodwinds, piano, and percussion.

Also on the program is traditional seasonal music ranging from Renaissance carols and hymns to familiar holiday songs.

Tickets for this performance are free, but reservations are required.

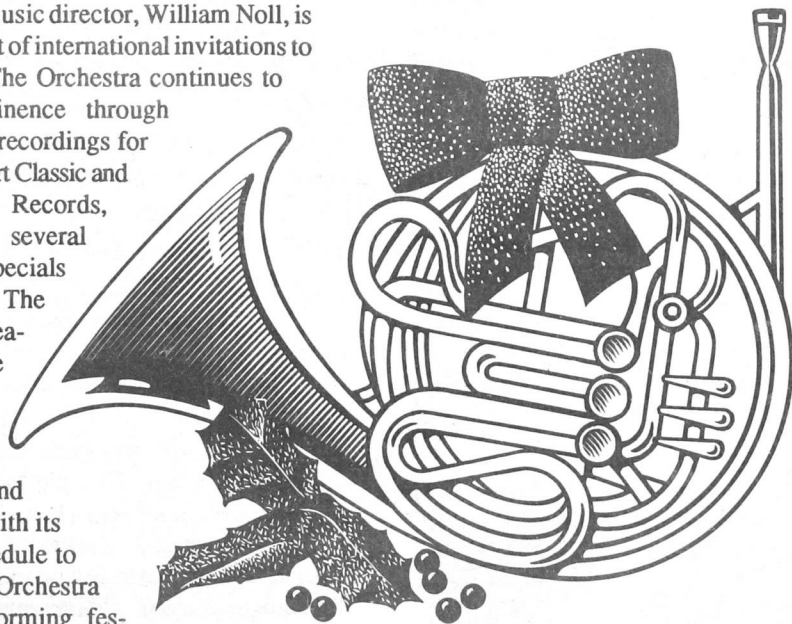
### Ritz-Carlton Orchestra Adds Additional Date

The Ritz-Carlton Orchestra's scheduled December 14 performance of "A Big Band Christmas" has proven to be popular. An additional performance, on December 13, has been added to the Spivey Hall holiday performance schedule. Both concerts will begin at 8:15 p.m.

The Ritz-Carlton Orchestra, conducted by music director, William Noll, is the recipient of international invitations to perform. The Orchestra continues to gain prominence through prestigious recordings for both Newport Classic and Time-Life Records, along with several television specials for PBS. The 1991-92 season has the Ritz-Carlton Orchestra performing and recording with its busiest schedule to date. The Orchestra will be performing fes-

sive music from a recently released recording for Time-Life Records, which was recorded at Spivey Hall in July, 1991. It is the first commercial recording made at Spivey Hall.

Ticket prices are \$12 for adults and \$4 for students and senior citizens.



## Toys For Tots Drive Is Underway

The Clayton State Students Supporting Other Students (SSOS) organization is working with the U.S. Marine Corp by collecting toys for children who

otherwise might have a

rather dismal Christmas. Gift-wrapped collection boxes are located in G-210, the CSC library (this box

is the only one available for night student donations) and outside D-217. Donations of new, unwrapped toys for children of all ages will be accepted until

December 12. Do your part in helping

to make Christmas this year a little bit more special for some very special kids in our area.

### Special Photography Exhibit In CSC Library

From December 2-20 there will be an exhibit of photographs taken by CSC Associate Professor of Art Tommy Daughtry. They may be viewed during normal library operating hours.



## CAMPUS NEWS



Photo by Provi Soto-Alicea

Pumpkin carving contest winner Mark Dean (l) poses with costume contest winner, Patrick "The Joker" Pierce. Pierce selected the pumpkin carved by Dean as his prize for winning the costume contest.

### Joker Wins Halloween Costume Contest

On October 31, the CSC Art Club held a Halloween Costume Contest and challenged other campus clubs to see who could come up with the best costume. More than two dozen students participated in the fun.

Winners were given their choice of jack-o-lanterns carved by other students in a separate pumpkin carving contest also sponsored by the Art Club.

The winners of the costume contest were first place, Patrick Pierce as The Joker; second place, Cheryl Hight as an emerald green mermaid and third place, Kim Carson as a Viking (in a uniquely creative metallic-clad outfit which she

fabricated herself).

Other participants in the contest were Preston Beam, Rafael Boada, Jason Bolton, Amy Brown, Sutton Chappel, Miranda Clark, Bill Durham, Dwain Eidson, Johnny Ferguson, Kim Goss, Allison Hall, Chris Hall and Jason Hellinger.

Additional contestants included Jay Henry, Barbara Hill, MaryJo Hill, Gloria Mallory, Tanya McDonald, Tony Mills, Suzanne Newman, Kristi Newton, Dawn Johnson-Perdue, Pat Peurifoy, Joy Primerano and Cherry Randolph.

The winner of the pumpkin carving contest was Mark Dean. He received an art sketch book for his efforts.



Photo by Provi Soto-Alicea

Pictured above are 24 of the contestants in the Art Club's Halloween Costume Contest. Balmy October weather made this a particularly pleasant outdoor activity.

## State Budget Crunch Has An Affect On CSC Library

by Debbie Meyer  
Head of Technical Services

I would like to take this opportunity to discuss the ways in which the State of Georgia's recent budget problems have affected the Clayton State College Library. First, the library's service hours will not be altered because of the lack of funds. The library will remain open Monday through Thursday from 7:15 a.m. - 10:30 p.m.; Friday from 7:15 a.m. - 5:00 p.m.; Saturday from 10:00 a.m. - 3:00 p.m.; and Sunday from noon - 5:00 p.m. Also, since no library positions have been eliminated, our customary high levels of service to students and faculty will continue.

However, the library has seen its materials budget cut by 63% during the 1991-92 fiscal year. Basically, this means that magazine, newspaper, and journal subscriptions will continue to be paid, as will bills for items previously encumbered through "standing order" services. Very few new books or audiovisual items will be ordered during the year.

New items requested by faculty and student alike will be held and purchased as soon as funds become available.

The Technical Services department of the library is seriously affected by these budget cuts, as our department orders, catalogs, and processes the new materials. Although the department currently has a cataloging backlog of approximately six months of materials, the paucity of new books ordered and received for the past several months has required shifting job responsibilities in several areas as well as initiating several large projects. The project that will have the greatest impact on students involves the conversion of cards currently in the card catalog to machine-readable form. This will allow all materials to be accessed by a computerized catalog; eventually, students will need to check only a computerized catalog to see whether or not the library owns an item.

We have every hope that the 1992-93 fiscal year will restore the library's customary level of funding. Until that time, we appreciate the continued patience and understanding of our students and faculty during Georgia's budget crisis.



### Food Drive For The Needy

From Now Through  
December 20, The CSC  
Library Will Accept Canned  
Goods And Other Non-  
Perishable Food Items In  
Lieu Of Fines. These Items  
Will Be Distributed To The  
Needy Prior To Christmas.  
One Can Or One Box Of  
Food Will Be Equivalent To  
\$1.00 In Accumulated  
Fines.

Please Clear Your Library  
Fines While Helping  
The Less Fortunate.  
You Can Also Donate Food  
Items Even  
If You Don't Owe A Fine.

Special Photo/CSC Public Information  
Patricia Rogers, a CSC sophomore majoring in physical education, was recently selected as Miss Clayton County. She will represent Clayton County in the Miss Georgia Pageant next summer. Ms. Rogers is currently a coach of the CSC Lakers Cheerleading Squad. She was co-captain of the inaugural squad. Congratulations.

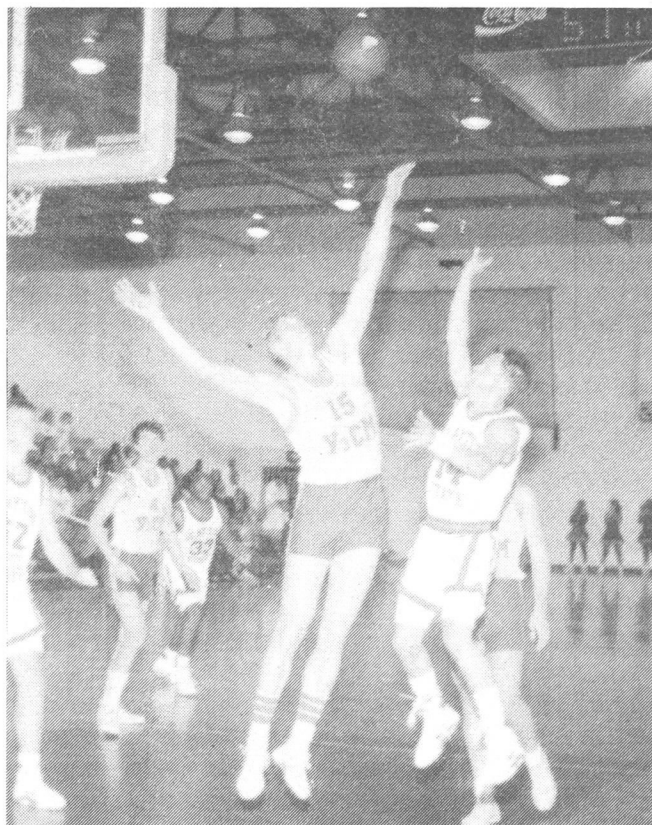


SPORTS

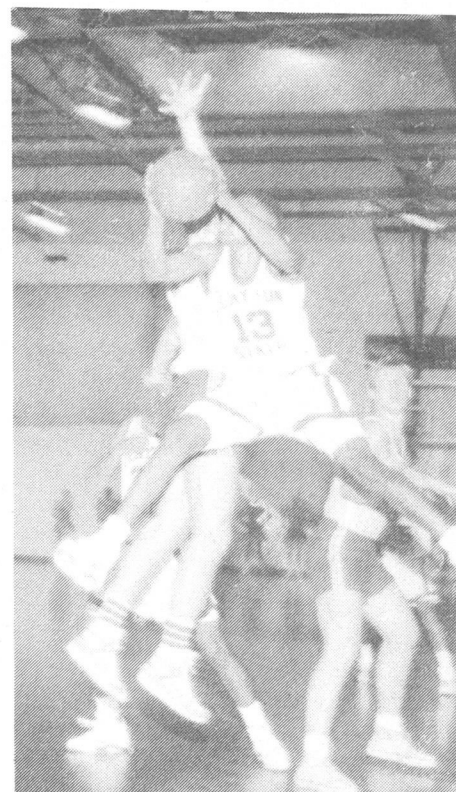
# The Lakers Opening Home Game In Pictures



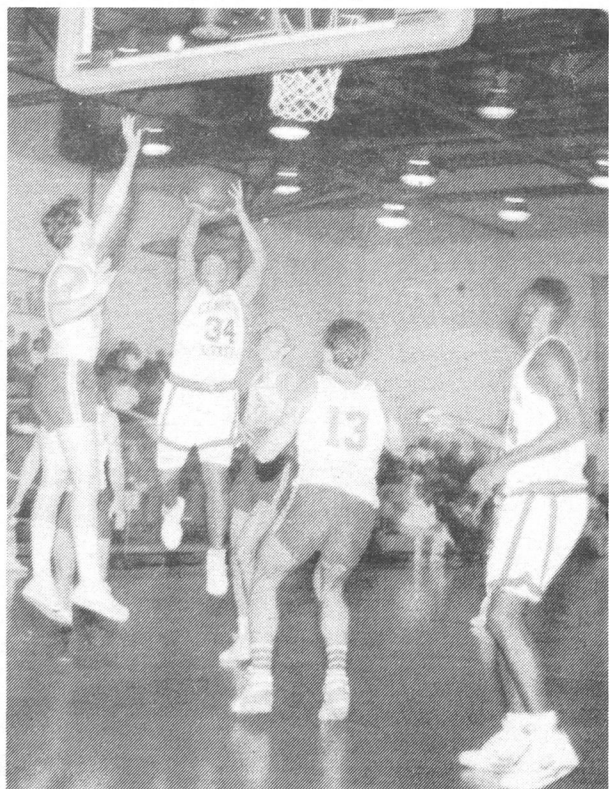
Dexter Brown (13) slams ones in for the Lakers.



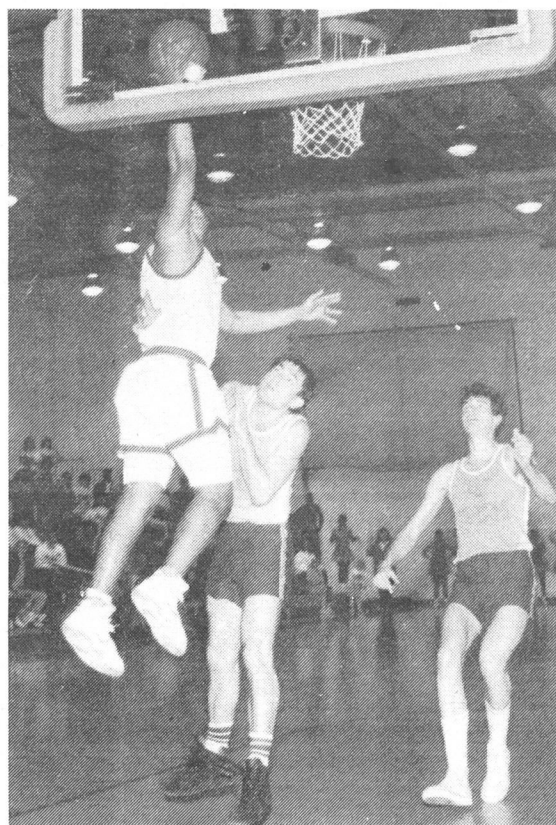
Matt Bowen (14) puts one out of the reach of 6'-7" Valeri Filyushkin (15) of Team U.



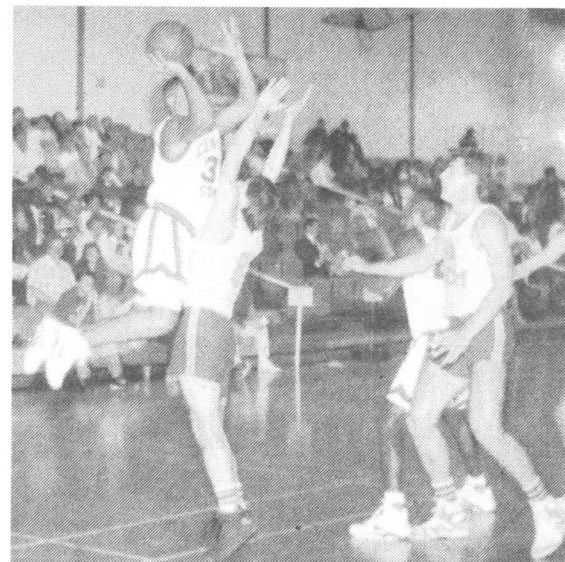
Dexter Brown (13) drives to the basket as a Soviet defender tries to block the shot.



The Lakers' Carlos Head (34) had to weave through three Soviet defenders for this shot.



Carlos Head (34) goes in for a lay-up against Oleg Levin of the Soviet Team U.



Laker guard Carlos Head (34) puts one up against the Soviet's leading scorer Oleg Levin (8). Head scored 13 points for the game.

## Home Opener (continued from page 1)

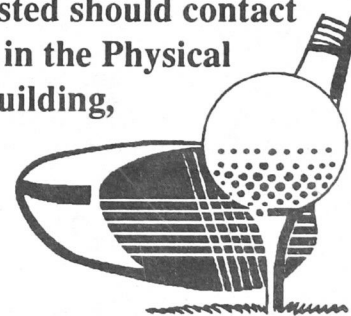
The Lakers were led by tremendous outings from Bobby Chappell (23 points, 8 rebounds, 2 steals) and Dexter Brown (22 points, 10 rebounds, 10 steals). Oleg Levin led "Team U." with 25 points, and was 7 of 11 from three-point range.

The game was videotaped and shown on Wometco-Clayton County cable TV. This was the first of what is hoped to be several games that will be shown on cable. Watch *The Bent Tree* and the bulletin boards for more information on this.

*All Photos  
On This  
Page Taken By  
Donna  
Burchfield*

### Clayton State College Intercollegiate Golf Spring 1992

Those interested should contact  
Jeff Ozment in the Physical  
Education Building,  
Room E-26,  
or call  
961-3669 or  
961-3465





## SPORTS

# Lakers Beat Piedmont College In Season Opener

Newcomer Bobby Chappell came off the bench to score a team-record 34 points to lead Clayton State College to a 93-87 season-opening victory over Piedmont College (1-4) in Demorest, Ga. Chappell, a sophomore forward who transferred from Polk Community College in Winter Haven, Fla., was 12 of 18 from the field and 10 of 13 from the line. He also pulled down 10 rebounds. His 34 topped the Norris Brantley's record of 33 against Central Wesleyan on Nov. 20, 1990.

Not only did Chappell have a record afternoon, the Lakers equalled or broke several team records set during their inaugural season last year. The Lakers' 93 points were the most scored, as were free throws attempted (39) and made (29) and steals (11). The team also equalled most

field goals made (32) and most points scored in the first half.

Despite a few rough, sluggish spots during the course of the game, the Lakers proved they had improved over last season. While the game was pretty even from the field, the Lakers dominated at the line shooting 74 percent (29 of 39) while Piedmont hit 55 percent (16 of 29). Clayton State did exhibit a bad trait from last season -- losing a lead.

The Lakers controlled the game from the opening tip, rolling to a 12-point 37-25 lead with five minutes to play in the half. But the Lakers allowed the Lions to get back into the game and tie it up at 41-41 just before the half. Piedmont came out in the second half to get its only lead of the game, 43-41.

The Lakers regained the ballgame's tempo and built a 15-point lead midway through the second half. Piedmont did pull within five, 90-85, with nine second left. But by that stage of the contest, the Lions were forced to put the Lakers on the line in order to get the ball and that decision proved costly.

Clayton State did not hit a field goal the final 3:33 of the game. However, the Lakers converted 10 of 14 free throws in the final three minutes to earn their first season opening victory in two tries. The Lakers also got a little revenge from last

season's 70-65 inaugural loss against Piedmont.

Besides Chappell's efforts, the Lakers got double-figures scoring from newcomers Keith Herring and Dexter Brown and veteran Carlos Head. Herring scored 20 points and grabbed 13 rebounds. Brown scored 16 points.

Head, a 6-1 sophomore forward who was the Lakers' leading scorer last season (17.4 ppg), came off the bench to score 11.

Piedmont was led by the duo of Richard York and Trent Fricks. York scored 25 points while Fricks had 24.

## Lady Lakers Lose Season Opener

by Mike Mead  
CSC Public Information Office

Clayton State College may learn that it isn't wise to schedule inaugural games against Piedmont College. Last season, the men's basketball team lost its inaugural game to the Lions. On Saturday afternoon, November 16, the Lady Lakers received a rude welcome with an 80-53 loss to the Lady Lions in Demorest, Ga. before a capacity homecoming crowd of 500.

Coach Lynn Jarrett's team couldn't match Piedmont's first half shooting as the Lady Lakers fell behind by 30 points, 52-22, in the first half and could not recover. Piedmont (2-1), led by Rhonda Blackwell's 20 points and 13 rebounds, shot 49 percent from the field in the first half while the Lady Lakers shot 33 percent. Clayton State also couldn't stop Dackri Davis' 3-point shooting. The Lady

Lions' guard hit four of seven treys and finished the game with 14 points.

Cookie Wise and Candi Wyatt led Clayton State with 12 and 10 points respectively. Wyatt made Lady Laker history by scoring the team's first basket at the 19:44 mark for the only CSC lead of the game. Natalie Taubert and Katrina Banks each added eight points.

While the first half was a blowout, the Lady Lakers held their hosts in check the second half by outscoring them 31-28. CSC finished the afternoon shooting 33 percent from the field and only 50 percent from the line while Piedmont shot 41 percent from the field and 83 percent from the line. Besides cold shooting, the Lady Lakers experienced the usual problems most teams suffer during the early going of a season. The squad committed its share of turnovers (24), had key people get into foul trouble and just plain tired out.

## Lady Lakers Downed In Home Opener

The CSC Lady Lakers, in their November 21 home opener, showed improvement over their season opening effort against Piedmont College. While losing to Central Wesleyan's Lady Warriors 74-56 the Lady Lakers cut the difference between them and the competition. They lost the first game by 27 points and the second game by 18 points. Total points scored was also up from 53 to 56.

Katrina Banks and Candi Wyatt led the Lady Lakers scoring with 13 points each. Banks also lead in the rebound department, pulling down ten during her 30 minutes of play. She was also the only Lady Laker to block a shot.

During the first half the Lady Lakers led by as much as nine points but the Lady Warriors came back strong, outscoring

the Lady Lakers 17-9 in the last 9:45 to lead 38-35 at the half.

While shooting .424 from the floor during the first half, the Lady Lakers dropped to .308 for the second half. One of the big differences in the game was that CSC took a total of 59 shots from the floor, while Central Wesleyan put the ball up 76 times. The Lady Lakers also seemed to tire near the end of the game. With just over three minutes left in the game CSC was down by only eight points. In the closing moments the Lady Warriors scored ten unanswered points to end the contest.

The Lady Lakers will play Central Wesleyan again on November 26 in South Carolina as the opening half of another double-header.

## Lady Lakers Stop Agnes Scott 86-43 Hamilton Scores 17 Points In Inaugural Victory

The CSC Lady Lakers, undaunted by two season-opening defeats, came on strong against the Agnes Scott College women's basketball team to down them by a final score of 86-43 in a game played last Saturday in Decatur.

Led by 17 points from forward Kim Hamilton, the Lakers led almost the entire game. At the half the score was 35-27 in favor of Clayton State. In the second half the Lady Lakers outscored the hapless Agnes Scott hoopsters 37-16 to seal their inaugural victory.

Stacy Spencer and Katrina Banks each added 14 points with all of Spencer's scoring coming in the second half. She scored all her points in just 19 minutes. Dawn Runion came off the bench to add

10 points for the Lady Lakers. Only one Agnes Scott player scored in double figures. The Lady Lakers made 28 of 69 field goal attempts and scored on 29 of 44 free throw attempts.

Defensively the CSC players outplayed the Agnes Scott team. CSC pulled down 52 total rebounds to Agnes Scott's 31. The also lead in the steals category 17-4, and allowed only 16 turnovers compared to 31 by Agnes Scott. The Lady Lakers were called for personal fouls 13 times, however Agnes Scott ran up 30 personal fouls on the game.

The next home game for the Lady Lakers is a solo contest set for Wednesday, December 4. The game, pitting CSC against the Emory University women's team, will begin at 7:30 p.m. in the CSC gymnasium.

## Lakers Still Remain Undefeated Balanced Scoring Helps To Beat Central Wesleyan

The Lakers men's basketball team, led by forward Keith Herring, defeated Central Wesleyan 76-69 on November 21 at the CSC gym. Herring, a sophomore transfer from Lewis-Clark College in Idaho, scored 23 to lead all scorers. He also pulled down 13 rebounds to lead both teams in that category.

The Lakers offense featured a balanced attack against the experienced Warriors defense. In addition to Herring, four other Lakers players scored in double figures. Dexter Brown led the rest of the pack with 19, including 3 free throws. Bobby Chappell and Carlos Head tied at 11 points each and Eric Boazman added 10 more.

The Lakers led by as many as seven in the first half but the Warriors scored four baskets in the last three minutes to knot the game 30-30 at halftime.

In the second half the lead swapped several times in the opening minutes but the Lakers took control after a little more

than six minutes into the half and never relinquished it. While scoring 30 during the first half, the Lakers scored 46 in the final 20 minutes compared to the Warriors 39.

The CSC team had a blocked shot (Chappell) and seven steals, lead by Keith Herring with three of the thefts. The Lakers were .500 in total field goal percentage (33 of 66), compared to .448 (30 of 67) for the Warriors

The Lakers, now 2-0 on the season (plus a home-opener exhibition win against a touring Soviet team) start the season just the opposite of last year. Last year the Central Wesleyan Warriors downed the Lakers 76-73 in Morrow and 103-86 on their home court in South Carolina. The two teams meet again in Central on November 26.

The Lakers next home game will be against Kennesaw State on Monday, January 8. This will be a double header and will begin with the Lady Lakers taking on the Lady Owls at 6:00 p.m. followed by the men's contest starting at 8:00 p.m.