

# Lakers Top GAC Standings (see Page 4 For Details)

Twenty-Fifth Anniversary Year

# THE BENT TREE

February 11, 1994

CLAYTON STATE COLLEGE

MORROW, GEORGIA

VOLUME XXV ISSUE 8

## Donuts And Dialogue With The Dean Deemed Excellent

by G. Alan Murphy, Jr.  
Staff Writer

Mark on your calendars and personal organizers that next week you have an appointment with the Dean of Students Robert C. Bolander.

No, you are not being sent to the principals office. On those days (unless they are changed) Dean Bolander will be sitting in the upper lobby of the Student Center talking to students about matters that the students feel are important.

The Donuts and Dialogue sessions take place over two days. The sessions are sponsored by the Student Government Association and run from 10:00 a.m. till noon and 7:30 till 8:30 p.m. The location was moved to the upper lobby of the Student Center.

On January 26-27, the first of two Donuts and Dialogue sequences, scheduled this quarter, took place. The special guest for the first session was the newly-appointed CSC President Dr. Richard Skinner. *The Bent Tree* was there.

Many concerns were voiced. Most of the questions and comments for the President and Dean Bolander centered around more four-year degree programs, athletics, and, of course, parking. President Skinner reiterated his main concern for the CSC campus. Safety.

One student observed that people go to school for four years and that if more four-year programs were instituted then enrollment would increase.

Another student noted that enrollment would increase as athletics did. Among the ideas for new team sports was volleyball, womens soccer, and lacrosse.

Questions about athletics touched off a discussion about money. Dean Bolander asked if the student body would mind having their activity-athletic fee increase from \$38 to \$48. \$58? \$68? The new athletic programs would call for more money.

The same goes for parking. One student asked if a parking deck could be constructed. Right now CSC students do not pay for parking. If a parking deck were constructed it would definitely require additional funds from the student body. But how much are the students willing to pay? \$20? \$50? How much are you willing to pay for better parking? The students who showed up for Donuts and Dialogue felt that \$30 was about the right price.

President Skinner remarked that there is plenty of parking but not all of it is in front of "C" building.

One student mentioned a desire to start a scuba diving club. Dean Bolander put out a challenge to this student when he



Special Photo/Rob Taylor

President Rick Skinner (right) speaks with an evening student during last month's first Donuts and Dialogue session. Dr. Skinner and Dean Bolander spoke with over 200 students during this two day/two night event sponsored by SGA.

said to start a new club get yourself five friends and an advisor.

For two hours the President and Dean of Students were asked dozens of questions pertaining to just about every subject imaginable. What can you do with an ID card? Why can staff and faculty park in student lots but not the vice-versa? Do "D's" transfer? What is the PE requirement? How does a TI-82 work?

The best way to hear about Donuts and Dialogue though, is to be there. It is scheduled to happen again next week. Watch the bulletin boards for more details as to time and date. Stop by the upper lobby of the Student Center if you are between classes from 10:00 a.m. until noon or from 7:30-8:30 p.m. Have some donuts and coffee. The food, like the conversation, is free.

## Clayton State Students Scarce At Spivey Hall

by Amy Hayes  
Staff Writer

When sitting in the lobby of Spivey Hall, it is not a rare occurrence to see government officials, wealthy business owners, and acclaimed artists stroll in and out. Nor is it odd to see local school children, student workers, an occasional usher, a public safety officer, or a piano tuner named Andy. There is, however, one event that has recently become more uncommon in the hall--the sighting of Clayton State students. Mrs. Sherryl Nelson, director of Spivey Hall, has been meeting with various people on campus in the hopes of encouraging more sightings of this endangered species.

Her efforts have evolved into a campaign to clear the misconceptions about the hall, its availability to the students,

and why student attendance is important. First of all, Mrs. Nelson wants CSC students to know that they are entitled to two free tickets to every concert at Spivey Hall with their validated student identification card. Many think that the student prices listed on concert advertisements apply to them, but those prices are for non-Clayton State students. In addition to the pair of free tickets, students are also entitled to purchase up to two half-price tickets for each concert. In a round-a-bout way, students can get four tickets for the price of one; this is quite a deal considering some concert admission prices are as high as \$25.00 a ticket. Any additional tickets purchased by students after the two free and the two half price tickets, will be bought at regular price.

The next item that Mrs. Nelson wants to stress to the students, is the value of the

hall itself; "This is one of the nation's most unique and remarkable facilities" she says. The new president of CSC describes the hall as one of the four best in the nation and one of the fifteen best in the world. Some people, "come from as far as Iowa to attend Spivey Hall concerts."

Spivey Hall was named for the late Emilie Parmalee Spivey and Dr. Walter Boone Spivey. Emilie was a talented organist and it was she who established the organization responsible for endowing the hall and its programs at Clayton State College-- The Walter and Emilie Spivey Foundation. Aside from financial support and the name, the Spiveys also provided the hall with original paintings and furnishings from their home. These items, along with the world famous Albert Schweitzer Memorial Or-



gan, give the hall its own distinct personality.

(See Students at Spivey on page 2)

VIEWPOINT

Students At Spivey (continued from page 1)

Of course Mrs. Nelson and fellow staff members know the hall is special, but when asked what others in the music and media professions think about it, Mrs. Nelson gave glowing reports. Out of the hundreds of artists who have graced its stage, many have said that Spivey Hall was the best place in which they have ever performed. Stephen Blier, the pianist for baritone singer William Sharp, confided in Mrs. Nelson that Spivey is not only the finest hall in Georgia, but is, in fact, the finest hall on the east coast.

This brings up another point that Mrs. Nelson wanted to make known to students--the quality of the entertainers. Each performer in Spivey Hall is selected from hundreds of professional artists. They are award-winning and well known for being the best at what they do. Mrs. Nelson is proud of the names that have been presented in Spivey auditorium and says, "If you were to go to New York and pick up the paper, you would see the same names."

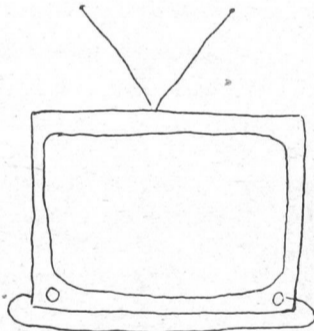
Perhaps the greatest hope Mrs. Nelson has for CSC students is the wish that they take advantage of the opportunity that is given to them. In her opinion, the hall is a necessary asset in teaching "cultural currency." This is to say that the

amount shared in these musical tributes, "transcends nationality and enables people to communicate without language barriers." She feels that this is most important and is something that many people of her generation have missed. Spivey Hall is a professional atmosphere, but it is not above anyone who wants to enjoy it; students from area middle and high schools walk the stairs of this prestigious hall every week.

So Mrs. Nelson says that it is important that CSC students feel just as at home as these pre-collegiate students regardless of their financial or social background. For those who think the music is "not for them," Mrs. Nelson hopes they will try a few concerts 'on for size.' If a concert 'does not fit,' she urges them to try another because each concert in Spivey Hall is different. Who knows, the next performance could be just what they are looking for. Besides, for the students, the tickets are already paid for through their activities fee. To not take advantage of this opportunity, would be like buying groceries and leaving them behind at the supermarket; only, in this case, students would have gone a great deal farther than the parking lot without remembering what is paid for and not received.

JOB PLACEMENT AND COOPERATIVE EDUCATION RECRUITMENT SCHEDULE FOR FEBRUARY-MARCH			
2/9	Atlanta Gas Light	D-208-Sign Up In Advance for Interview	P/T Dispatcher Weekends & Holidays \$9.49
2/9	Roadway Package Systems	C-Lobby 9:00 am - 2:00 pm	Package Handlers \$8.00 hr
2/10	Interviewing Techniques	D-223 12 noon	Presented by: Atlanta Gas Light
2/14	United Parcel Service	Cafeteria 8:30 am - 2:30 pm	Loaders/Unloaders \$8.00 hr
2/16	Roadway Package Systems	Cafeteria 9:00 am - 2:00 pm	Package Handlers \$8.00 hr
2/16	United Parcel Service	Cafeteria 8:30 am - 2:30 pm	Loaders/Unloaders \$8.00 hr
2/17	Organizing A Job Search	D-223 12 noon	Presented by: United Parcel Service
2/22	United Parcel Service	Cafeteria 8:30 am - 2:30 pm	Loaders/Unloaders \$8.00 hr

Rare Treasures of the 1990's by Amy Hayes



A wholesome television program



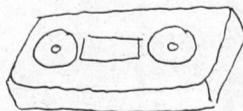
An honest politician



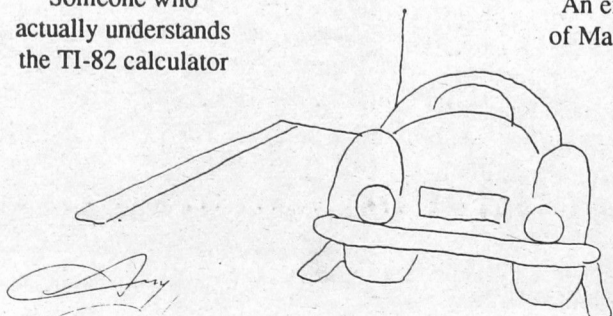
A life-long friend



Someone who actually understands the TI-82 calculator



An exclusive home video of Madonna in full clothing



An empty parking space at Clayton State

SPECIAL

\$.99

Sandwiches  
Limit 4



At the Student Center Food Court  
TUESDAY NIGHTS ONLY  
5-8 PM (This Special Ends on 2/22)

THE BENT TREE

STAFF

Co-Editors....Jenipher Klessig and Josh Pearson  
Photographer....Lance Foster  
Cartoonist....Amy Hayes

Brad Fairchild  
Zach McCarley

G. Alan Murphy, Jr.  
Candi Wyatt

Advisor.....Rob Taylor

The views expressed in *The Bent Tree* are not necessarily the views of the student body, administration, and faculty of Clayton State College. Signed editorials represent the opinion of the writer and may or may not reflect the opinion of the staff. Unsigned editorials are presumed to reflect the opinion of the staff of *The Bent Tree*.

*The Bent Tree* welcomes opinion and commentary from members of the College community in the form of "Letters to the Editor" or "Freelance Submissions." These submissions should be sent to *The Bent Tree* by depositing them in *The Bent Tree* mailbox in D-217. All submissions should be typed, double-spaced, and are subject to standard editing based on space availability. All "Letters to the Editor" must be signed, but names may be withheld for valid reasons. Unsigned letters will not be published. All submissions should also include the social security number of the person writing the submission (for complete identification purposes). For further definition of "Letter to the Editor" or "Freelance Submission" see the Faculty Advisor of *The Bent Tree*.

*The Bent Tree* is published under the direction of the staff of *The Bent Tree*. *The Bent Tree* is published a minimum of four times per quarter (fall, winter and spring).

## CAMPUS NEWS AND ENTERTAINMENT

## Jamaican Bobsledders Take Over G-132

by Zachary A. McCarley  
Staff Writer

All of Clayton State College will be shocked to find out that four Jamaicans will take over room G-132 on February 11. "Why are they going to be here?" one might ask. Others may also wonder why John Candy is with them. The answer to both of these questions is simple. The Clayton State Cinema movie of February is *Cool Runnings*.

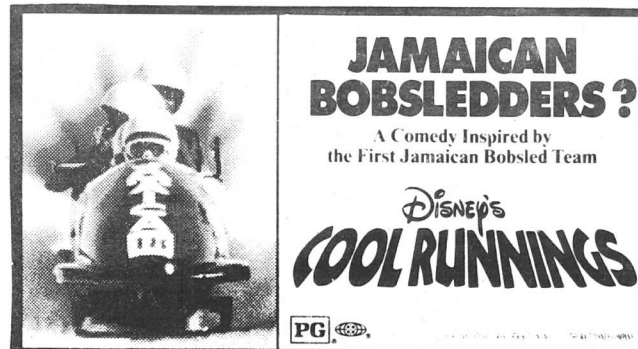
Disney's *Cool Runnings* is a comedy nearly based (Disney used the word inspired) on the true story of the 1988 Winter Olympics at which Jamaica competed for the first time in the bobsled competition. This story includes four Jamaicans, all having one thing in common. All of them had the common dream to compete in the Olympics. At least one of these would have seen this goal achieved as a sprinter had there not been an accident at the Olympic tryouts. This left these four athletes with little chance of achieving their dreams for at least another four years.

This is when one of these Jamaicans comes up with a ludicrous idea. He wants to get a bobsled team together for Jamaica. This is where the real problems start, though. Having only him and his

best friend for the team, this eager athlete has to find two more members to make a full bobsled team. He also has to find a coach who can teach four people who have never even seen snow to be world class bobsledders. After he gets a team and a coach, played by John Candy, this unlikely group must first learn the sport. Then they must raise enough money to get to Canada, where the Olympics are to take place.

Although the story in itself is more than worth the time, there is more incorporated in this movie. Weaved into *Cool Runnings* is a message about not quitting despite however much resistance there is against one completing a goal. This movie also reminds people of the often forgotten purpose of the Olympics which is that one may represent his country in competition. This is many times lost in personal glory and sometimes results in cheating. *Cool Runnings* is an overall "feelgood" movie. Do not be "afraid of what's different" as said in the movie.

Go and welcome this popular movie. *Cool Runnings* will be playing on February 11, at 1:15, 8:30, and 10:15 p.m. in room G-132. There will also be a 7:30 p.m. showing of this PG movie in the Dining Hall following the Family Night Dinner. Do not resist these Jamaicans. They are taking over G-132 for our entertainment.



FRIDAY, FEBRUARY 11, 1994

1:15, 8:30 and 10:15 PM G-132

7:30 PM Showing in the Dining Hall

following the 6:30 PM Family Night Dinner

## So... What About Black Womyn

by Jenipher Klessig  
Co-Editor

If one is to believe the message of James Chapman's drama, "What About Black Womyn?," black womyn are complex, angry, reflective, confused, upbeat, funny, supportive, and resourceful. Lyeceum presented this production in late January in G-132.

In his two act play, Chapman forced the audience to deal with AIDS face to face. There was nowhere to hide from the pain of the characters. They reached out to you, they brought you into their world of sorrow, they made you care, they forced you to understand them despite your protests.

The true magic of the play laid within the abilities of the fine actresses who portrayed these womyn on stage. Ruth, a 22 year old naive prostitute, was played to perfection by Ms. Shandra Staples. Ms. Staples is a theater major at Texas Southern University. Naomi, a 40 year old widow who was trying desperately to hold the women, and herself, together, was portrayed by Ms. Nicole Johnson. Ms. Johnson is also a theater major at Texas Southern University. Billie, the trash-talking transvestite, shocked the

audience with her frankness and moved them with her vulnerabilities. She was played by Nadine Calloway. Ms. Calloway is an eighteen year old high school student who will be studying theater and law at the University of Kentucky next fall.

The play was extremely powerful and exceptionally effective. After seeing the play, one feels a tremendous sadness for the losses of these womyn. Yet, Chapman does not allow one to feel completely defeated. There was a message of hope, even when dealing with AIDS. These womyn were fighters. They had been dealt a losing hand by fate (and many times through their own choices). But, they managed to survive, at least for a while, for the audience, for themselves, and for understanding.

Chapman has written a socially relevant play which touched emotions in all that were present. There was scarcely a dry eye as the audience left the theater. Chapman was able to bring a distinctly human touch to a sensitive subject. It is through education, whether it is in a book, a television program, or a play, that society will learn to deal with the prejudices, fear, and hatred that often accompany the subject of AIDS.

**A Call for Talent!**  
Magicians Jugglers Mentalists  
Clowns Ventriloquists  
Prestidigitators

If you dabble in any of the Magical Arts and would like to participate in the Clayton State College 13th Just-About-Annual Spring Magical Extravaganza (and what self-respecting magician wouldn't) - contact Dr. Jim Braun, G-110-S, 961-3665 for details.

The deadline for the next issue of *The Bent Tree* is February 10, 1994. If you wish to submit a freelance article or a letter to the editors, please drop it by the Office of Student Activities (D-217) by 1:00 p.m. that day. All submissions should include your name and social security number.

\$\$ **The Financial Aid** \$\$  
**Forms For The 1994-95  
Academic Year Are Now  
Available In The Financial  
Aid Office (Room D-217)**

## SPORTS

# Lakers Are On The Rise

by Candi Wyatt  
Staff Writer

The Clayton State Lakers continue to prove their ability to win the Georgia Athletic Conference (GAC) title this season with a 8-2 record (through February 5). Their record ties them with Georgia Southwestern for first place in the conference. Their overall record is an amazing 17-4 and they have not lost a home game this season.

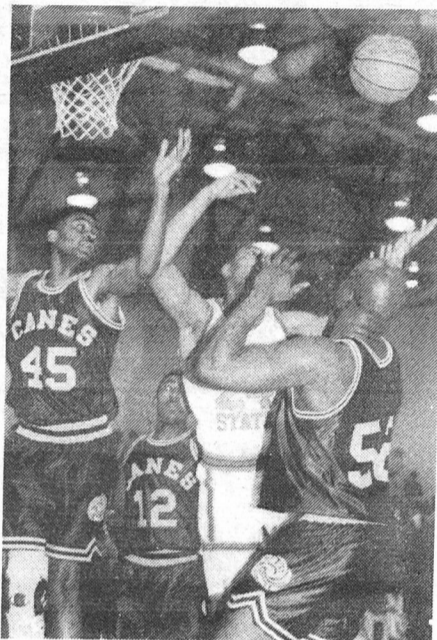
On January 22, the Lakers played Berry College in Rome. The game was fairly close throughout but CSC managed to keep the lead until late in the second half. Berry began to make their move and the Lakers lost their tempo. The underdogs came up with an 84-76 victory over CSC. Carlos Head and Josh Kammerer each scored 17 points and Keith Herring chipped in 15 points. Kammerer also had a game high of 12 rebounds.

On January 24, the Fighting Owls of Kennesaw State College came to town. The Lakers were once again faced with a team that they hadn't been successful with in the past. The CSC players were ready for their competition and were eager to get the action started. The Lakers never gave up their lead and went on to win 88-65. Head scored 20 points and Herring had 15. Herring and Todd Holts pulled down 8 rebounds each.

The Southern Tech game, rescheduled because of bad weather, was played here on January 29. This was an important GAC game for the Lakers and they knew that they had to win the game in order to increase their ranking. Herring led CSC to a 66-51 victory by scoring 16 points and 6 rebounds. Brian Harmon had 12 points and joined David Viti with 7 assists each.

Conference play continued on January 31 with Georgia Southwestern. The game was played here and the CSC players were hungry for victory since they lost to their opponents at their visit to Americus. The teams exchanged leads throughout the game and with 6 seconds remain-

ing the game was tied. Herring sparked the game by scoring 16 points in the second half and 2 of those came at the end from the free throw line to give CSC the



Staff Photo /Lance Foster

lead for good. The Lakers won the game 75-72. Herring ended up with 23 points. Head and David Curry scored 15 each.

On February 2, the Lakers traveled to Mount Vernon to play GAC rivals Brewton-Parker College. This road contest ended with the Lakers winning an exciting game in overtime. The final score was 72-71.

Yet another conference game was played on February 5, as the Lakers took on LaGrange College, ranked highly in the GAC. LaGrange College led by seven at the half, but the tide turned in the second half as the Lakers slowly chipped away at the lead. With a little over ten minutes left in the game the Lakers took a two point lead with a layup from David Curry. The Lakers went on to win 97-84. Carlos Head led the team with 26 points and Herring had 21.

The next home game is on Monday, February 14. The Lakers will face the Berry College Vikings at 8:00 p.m.



## Remaining 1993-94 Men's & Women's Basketball Schedule

DATE	OPPONENT	LOCATION	TIME
Feb. 12	Life College (Men)	Marietta	7:30 PM
Feb. 14	*Berry College (DH)	Morrow	6 & 8 PM
Feb. 16	*Shorter College (DH)	Morrow	6 & 8 PM
Feb. 19	Morris Brown College (Women)	Morrow	3 PM
Feb. 19	*Southern Tech (Men)	Marietta	7:30 PM
Feb. 23	*Georgia Southwestern College (Women)	Americus	6 PM
Feb. 23	*LaGrange College (Men)	LaGrange	7:30 PM
Feb. 26	*#Piedmont College (DH)	Morrow	6 & 8 PM
Mar. 2-7	Georgia Athletic Conference Playoffs (Men)	TBA	TBA
Mar. 2-8	Georgia Athletic Conference Playoffs (Womens)	TBA	TBA
Mar. 15-21	NAIA Division I Tournament (Men)	Tulsa, Oklahoma	TBA
Mar. 16-22	NAIA Division I Tournament (Womens)	Jackson, Tennessee	TBA

\* Indicates NAIA/GAC Opponent #LakerFest IV '94

## Lady Lakers Becoming Streaky

by Josh Pearson  
Co-Editor

The Lady Lakers can not seem to stay consistent as the season goes into its final month before the playoffs. After losing three in a row for the second time this season, they rebound with three impressive wins over Central Wesleyan College, Georgia Southwestern College and a "squeaker" over Brewton-Parker before losing again to Lee College.

After falling to Georgia Athletic Conference (GAC) opponent Shorter College, the Lady Lakers fell to another GAC opponent Berry College, 79-67, in Rome. They then lost at home to Ken-

lead the team with 18 points. They then took on GAC opponent Georgia Southwestern at home to try to improve their record in the GAC.

Georgia Southwestern led for much of the first half but never got over a seven point lead before the Lady Lakers came back to lead at the half by four. The second half saw the lead change several times early in the half until the Lady Lakers took the lead for good with over eleven minutes left to play. The Ladies won 76-67 with Ruth Idahosa leading the team with 24 points.

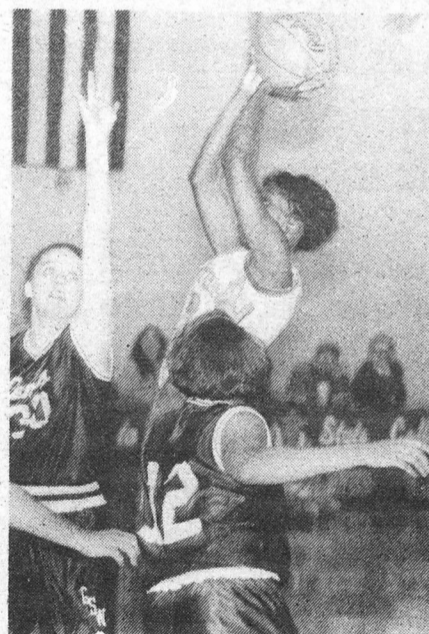
On February 2, the Lady Lakers won their first road game of the season on a non-neutral site by beating Brewton-Parker at Mt. Vernon. The Ladies 67-65 edging of GAC opponent Brewton-Parker brought their win streak to three games, just one win shy of matching their season-high four game win streak.

Their road woes continued, though, as Lee College nipped them 54-53 in Cleveland, Tennessee. The Lady Lakers were in position to win with eight seconds left on the clock but could not convert a basket.

The Lady Lakers now stand at 11-10 on the season and they are 3-4 in the GAC. As of February 2, the Lady Lakers were tied for third in the GAC. Their home record is still impressive at 7-2.

Finally, on January 26, in the game against Central Wesleyan, Ruth Idahosa joined Candi Wyatt as the only two Lady Lakers to have 500 career points.

The next home game for the Lady Lakers will be against the Berry College Lady Vikings on February 14 at 6:00 p.m.



Staff Photo /Lance Foster

nesaw State College, 74-55, marking only their second home loss in nine games. In this game, however, Dorian Ransby scored a career high 24 points.

The Lady Lakers rebounded impressively, though, with a 73-49 home victory over Central Wesleyan in which Ransby



GIVE  
BLOOD

+

American  
Red Cross

February 22

9:00 a.m.- 1:00 p.m.

C-Lobby

Support The  
CSC Lakers