



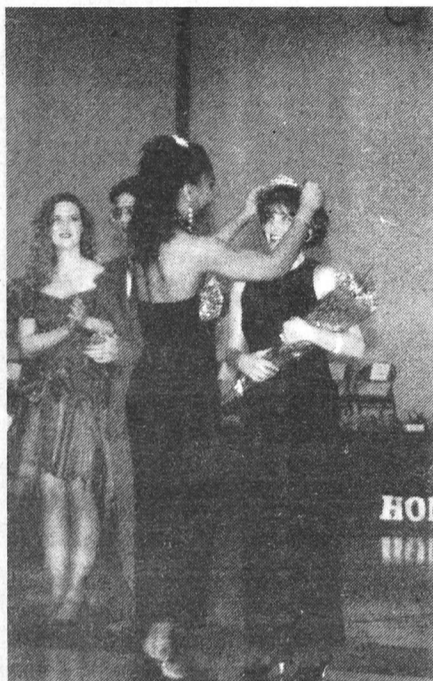
The Bent Tree

February 8, 1995

Clayton State College

Volume 26 Issue 8

King and Queen Crowning



Special Photo /Rich Mason

by Alan Murphy
editor in chief

During the halftime of what would become a perfect homecoming two CSC students were crowned as LakerFest King and Queen.

David C. Gilliland IV, the SGA candidate, and Kari Calvo, the candidate from the Teacher Education club won the election.

Over 300 students voted. While Calvo won with 59 votes, Beverly Burns, *The Bent Tree* candidate, was runner-up with 42 votes. Gilliland edged out Steve Copeland of the Teacher Education club by five votes with 70.

"It was a success," said SGA President Natalie Hynson, "I think that we had more interested clubs." In terms of the events at this year's LakerFest, Hynson was asked about which one was her favorite: "I enjoyed the cookout, there were many nontraditional students there. It was probably the best event of them all."

Last year's LakerFest Queen, Candi Wyatt, places the LakerFest crown on the head of Kari Calvo from the Teacher Education Club.



Special Photo /Rich Mason

Loch the Lucky Laker is reluctant to hand over the LakerFest scepter to David C. Gililand IV, the candidate from the Student Government Association.

In This Issue:

Evelyn Glennie Review
p.2

Parking Problem?
p.3

The Bent Vent
p. 3

The Warped Twig
p. 3

Sports Predictions
p. 4

Laker Updates
p.4

**Go Lakers!
and
Lady Lakers!**

SNOW

JAM!!

by Cynthia Watkins
Staff Writer



Special Photo /Rich Mason

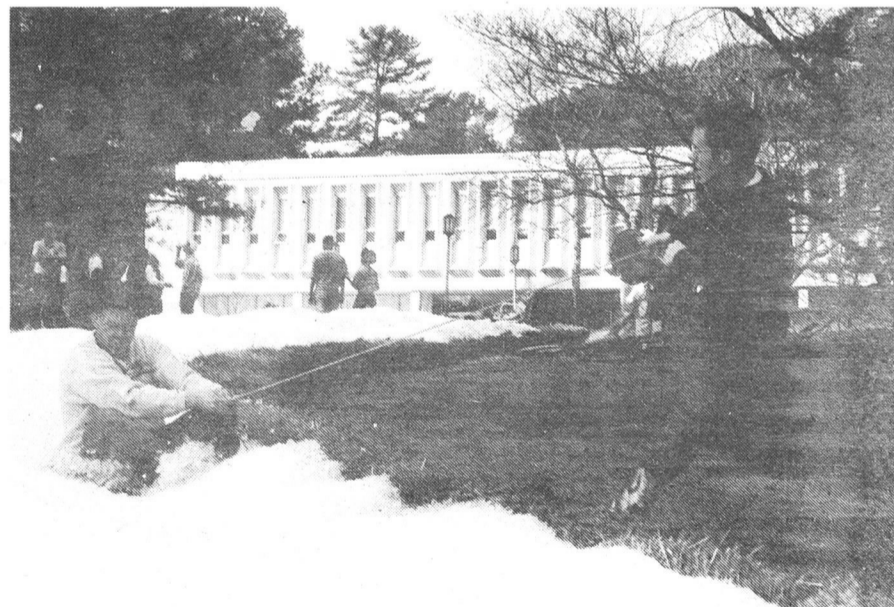
Florence Weston laughs with delight after enjoying a slide down the slopes at Snow Jam '95.

Lakerfest activities continued here at CSC on Feb. 3 with "Snow Jam '95." SGA organized the event, and considered it a success despite a setback early on.

The 32 tons, yes, tons, of ice that SGA used to make the "slope" was delivered Feb. 2. Unfortunately, the machine that should have chipped and packed the ice broke down. This resulted in the Snow Jam organizers having to pack ice until 10:30 p.m.

While the early morning proved slow, lunch hour brought a steady crowd to check out the slopes. By 8 p.m., more than 400 people had come for the sledding and family hour entertainment.

From 6 p.m. until 7 p.m. focus was directed on the family. SGA hired clowns to come out and entertain the kids. One



Special Photo /Rich Mason

SGA AT WORK: Clay Vaughn pulls David Gilliland, both Student Government members, up to speed at the snow sledding on Friday, Feb. 3.

clown did balloon sculptures. Another did face painting. One even brought along her pot bellied pig.

Family hour also consisted of a cookout from 6 p.m. until 8 p.m. CSC provided free hot dogs, chips, lemonade, and hot chocolate for the sledders and

onlookers.

Several in attendance at Snow Jam '95 replied that they'd had a great time, whether sledding or just watching the kids. Snow Jam '95 was a success, and despite the few daredevils who came out, no injuries were reported.

Percussion Performance is Perfection

by Amy Hayes
Illustrator

There is nothing more stirring than a great performance, and no more impressing upon an audience is the sense of emotion that a performer can portray. Evelyn Glennie, percussionist, is an incredible example of such mastery and art. Her performance on Thursday, January 26, was by far an important adventure for our beloved Spivey Hall.

Evelyn Glennie is one of the very few percussionists ever to perform in Spivey. She is also one of the only full-

time solo percussionists in the world, having performed with several major orchestras including the London Symphony and the Los Angeles Philharmonic. In addition to solo recitals, chamber music performances, acclaimed recordings, and master classes, she has also made world-wide television and radio broadcasts. As a student at the Royal Academy in London, Glennie was awarded the highest honor a student could receive there—the Queen's Commendation Prize. With tours spanning across nearly every continent, Evelyn Glennie is truly an accomplished musician.

The performance at Spivey Hall was unassailably striking! Glennie began with the pounding energy of James Basta's *Concerto for Marimba* which she later described to the breathless audience as merely "a little warm-up." She continued with a purring snare drum solo, *Prim*, by Askeel Masson, and a piece which she composed for a friend who was killed in a climbing accident. Witnessing this angelic marimba solo, entitled *Giles*, I was inspired by the absolute passion with which she had carved the work.

With pianist Philip Smith, Ms. Glennie then performed a unique display of sound and motion in John McLeod's *Song of Dionysius* and a very ritualistic interpretation of John Psathas's *Matre's Dance*. The vast range of instrumentation Glennie used was most impressive. Of course, her solo performance of *Michi*, written by the extremely talented Keiko Abe, poured out the sensitivity of her own gifts even more.

The percussion standard, *Concertino for Marimba* by Paul

Creston, was to be the last number for Ms. Glennie, but an unrelenting round of applause led her to perform what I recognized to be another Abe piece. When she completed the song, she ended the concert with the high-speed *Flight of the Bumblebee*.

Wade Bailey, a student in the audience, proclaimed the concert to be the "best performance since I saw *Phantom* in London." For many, it was almost impossible to believe that Evelyn Glennie, having such an intense understanding of sound, is almost totally deaf! The Scottish-born musician showed hardly any sign of her challenge other than performing barefoot to feel the vibration of the piano accompaniment. After meeting her in the reception room, I could hear whispers from fans saying "you would never know." It is because of her overwhelming desire to perform that she has cleared this obstacle, for she is a living display of the human will. What an honor to have had her on our campus! And, of course, what an honor to hear her say "it's a beautiful hall...I love it."

Winter 1995 Recruitment Schedule
CSC Job Placement & Cooperative Education Room D-208 (404)
961-3518

Feb. 23	Olsten Staffing	Cafeteria 10 AM - 1 PM	Clerical Industrial
Mar. 7	Kroger Career Day	CE-Building	Grocery Positions

Scholarship!!!

Philippine Charity Foundation of Georgia, Inc.

The Philippine Charity Foundation of Georgia, Inc. has established a one year, three quarter special scholarship for a Filipino student. Students must have a minimum grade point average of 3.0 (high school or college) and must submit an application, two letters of recommendation and a one page essay on the topic "Why I feel I deserve this scholarship."

**Scholarship applications are available in the office of the Dean of Students.
(Room D-223)**

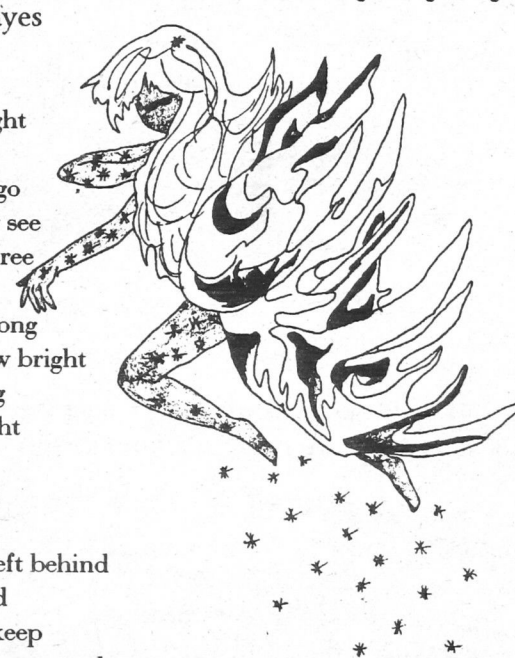
The Dew Fairies
by Amy Hayes

Illustration by Amy Hayes

Shimmering wings take flight
In the early dawn before the light
Nimble limbs sway to and fro
Tending to traditions of long ago
The sleeping world could never see
Them slipping silent from the tree

With careful steps they glide along
The sparkle in their wands glow bright
Glistening voices join their song
And vanish slowly with the night

The silvery dew upon their feet
Is left behind in quick retreat
And that wonderous gift they left behind
The sun will all too quickly find
Then gather it up for years to keep
While the dew fairies go back home to sleep



The Bent Tree

<p><u>Editor in Chief</u> Alan Murphy</p> <p><u>News Editor</u> Beverly Burns</p> <p><u>Entertainment Editor</u> Aimee Ford</p> <p><u>Illustrators</u> Amy Hayes Thomas Stafford</p>	<p>is:</p>	<p><u>Staff Writers</u> Tahlata Hasan Charlotte Locklear Conan McCollum Monique Mueller Cynthia Watkins James E. Williams</p> <p><u>Distribution Manager</u> Melissa R. Mayo</p>
<p><u>Faculty Advisers</u> Nancy Green Richard Mason</p>		

The views expressed in *The Bent Tree* are not necessarily the views of the student body, administration, and faculty of Clayton State College. Signed editorials represent the opinion of the writer and may or may not reflect the opinion of the staff. Unsigned editorials are presumed to reflect the opinion of the staff of *The Bent Tree*.

The *Bent Tree* welcomes opinion and commentary from members of the College community in the form of "Letters to the Editor" or "Free-lance Submissions." These submissions should be sent to *The Bent Tree* by depositing them in *The Bent Tree* mailbox in D-223 or given to any member of *The Bent Tree*.

All submissions should be typed, double-spaced, and are subject to standard editing based on space availability. All "Letters to the Editor" must be signed, but names may be withheld for valid reasons. Unsigned letters will not be published. All submissions should also include the social security number of the person writing the submission (for complete identification purposes). For further definition of "Letter to the Editor" or "Free-lance Submission" see any staff member of *The Bent Tree*.

The *Bent Tree* is published under the direction of the staff of *The Bent Tree*. The *Bent Tree* is published a minimum of four times per quarter during the fall, winter and spring quarters.

Letter From The Chief

by Alan Murphy
editor in chief

Oh my, there is a lot to talk about. Whatever should I write about?

First I would like to thank those students who have joined us on the InterNet. At last count there were close to 400 students listed on the s1/server. But that is still less than 10 percent of the total student body. Sign up, please! You are missing everything.

Are you having trouble parking? Well, I can tell that there are, at *any* given moment, more spaces than cars on campus. Unfortunately, they are all across the lake. Fortunately, Tahlata Hasan, one of our staff writers, will be telling you about a company that wants to shuttle students in from other park-

ing lots around town. Look for her articles in upcoming issues of *The Bent Tree*.

Do you like Loch? Do you know who Loch is? Loch is the mascot here at CSC and he, er... she... *it* has been appearing on campus recently. Don't be frightened, it is harmless. Especially at basketball games.

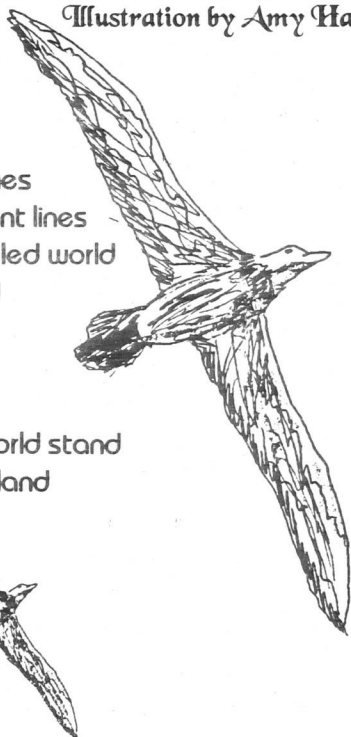
The student activity hour has been a source of contention lately partially because there isn't one. In the past the activity hour has fluctuated between the times of 10 a.m. to 1:30 p.m. It was only this year that it was eliminated completely. This has left several clubs and organizations out in the cold since there is no time that everyone is free.

Stay tuned to this newspaper, folks. You will be pleased.

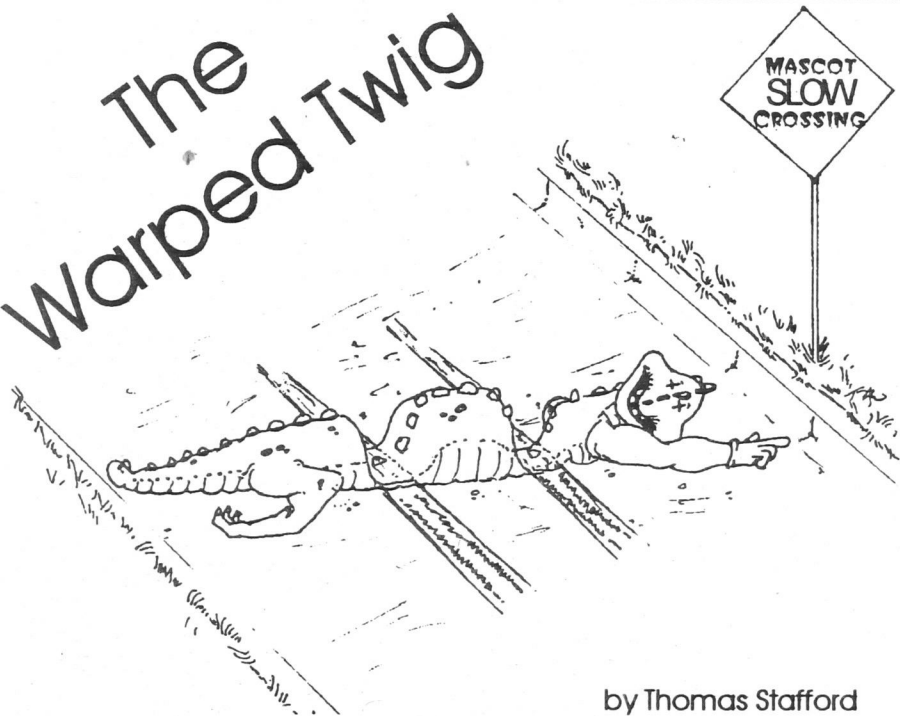
No Hope by Dayron Dougherty

Vast holes are filled with troubled times
Emotions are covered over with violent lines
There is no room for hate in this troubled world
Truth is distorted, twisted, and curled
A cry for peace is never heard
The Albatros is dead
The sacred bird
What more torment can this raped world stand
Poisoning the seas and polluting the land
When this world goes
It will go with a bang
So many innocent lives lost
And all that is said is
"Oh what a shame"

Illustration by Amy Hayes



The Warped Twig



by Thomas Stafford

The Bent Vent

TELL IT LIKE IT IS

"Why isn't there a student hour anymore?"
"Have the computer labs been ignoring *The Bent Tree*? We still can't get into cyberspace programs."
"Why can't I spell check on WordPerfect 6.0 in the computer labs?"
"Why can't we print out WordPerfect 6.0 documents?"
"Why are the only students at the basketball games playing in them?"
"What's a Laker? Our mascot looks like a dilapidated Barney."
"Kill the ducks! I am not going to slow down anymore."

The *Bent Vent* is an opinion-based column that expresses the candid views of the student body at large. No names are ever used. If you have something that you would like to "Vent" then please drop it in the *Bent Tree* mailbox (D-223) or slide it under *The Bent Tree* office door. You must be an enrolled CSC student. All submissions are verified by social security number.

CSC Accounting Club

presents:

VOLUNTEER INCOME TAX ASSISTANCE

Sponsored by the Internal Revenue Service

Free tax information and preparation!

Federal and state forms, booklets, schedules, and advice.

Month of February

Wednesdays 10:00AM-12:00PM/ 5:00PM-7:00PM

C-Building Lobby

Saturdays 10:00AM-12:00PM

L-Library Room (L-102)

For more information contact:

Professor Harold Joseph (Director) 961-3452

Trina Barton (Assistant Director) 957-7071

WHAT SHOULD BE THE TITLE OF THIS CARTOON?

CSC mascot search continues.

The Loch you save might be your own.

Public Safety response times getting quicker.

Loch ain't so lucky no more.

[bump-bump] "What was that?!?..."

Some people still don't believe.

"Did you see the size of that squirrel?!"

Under mysterious circumstances, Kristin Fowler becomes SGA President.

Just a reminder: 15mph.

Tragedy strikes campus... new item on CSC lunch menu.

OR

E-MAIL US YOUR OWN IDEA AT

"benttree"

The Eye-Ball Sees All: Sports predictions true or not.

by James E. Williams
Staff Writer

The Super Bowl is not a championship game; it is merely an exhibition. It is a yearly clinic performed by the dominant NFC team. The AFC has become the red haired step child of professional sports; a phoria of the athletic community. They have lost 11 straight championship games by a combined score of 181-426.

This years classic was not a exception to the rule. The San Francisco 49ers blew out the San Diego Short Circuits 49-26 in a game that wasn't even as close as the 23 point victory might suggest.

"The real Super Bowl was played last week against Dallas. It truly was," said our old friend Deion Sanders.

Las Vegas has already installed next seasons NFC champion (i.e. Dallas or San Francisco) as a 12 point favorite over the sacrificial lamb that will represent the AFC. My prediction; Goliath 86, David 13.

The Falcons might make a decent AFC team; maybe even ascend to the status of sacrificial lamb one day. These are lofty aspirations for Atlanta fans, such as myself, who would be

glad to trade places with the Buffalos and Denvers of the world to have the privilege of being trounced to death in a championship game.

Alas, we are doomed, locked in the same division as the mighty 49ers. I have been an Atlanta fan all my life and I am loyal to the bone, yet I know deep in my heart that the Falcons will never reach the Super Bowl as long as they remain in the NFC. League realignment is our only hope of rescue from the endless persecution that we have endured.

The Falcons are a perfect fit in the AFC. They use gimmicks on both sides of the ball. They can't run the ball or use the clock effectively and they don't play defense. These are the classic features of an AFC conference champion.

Team owners are scheduled to meet next week to discuss the possibility of geographic realignment that would place the Falcons in the AFC eastern division. This move would be totally logical considering Atlanta is in the east, which is exactly why it probably won't happen. My prediction is that Atlanta stays right where it is now and always has been; somewhere between mediocrity and hopelessness.

Food For Thought

Do you have questions and concerns about your eating habits? Would you welcome the opportunity to talk with others like you? Come join us and explore your relationship with food and eating.

Contact: Mendee Rock or Catharine McClarin

Office of Counseling and Career Planning
961-3515

SGA Office Hours

Monday
8AM-9AM
5:30PM-7:30PM

Tuesday
8:15AM-9:50AM
1PM-3:30PM
6PM-8PM

Wednesday
8AM-9:50AM
4PM-6PM

Thursday
8:15AM-9:50AM
1:30PM-3:30PM

Upcoming Laker Home Games

Men:
vs. Lee College
Feb. 9
7:30 PM

vs. Southern Tech
Feb. 18
3:00 PM

Women:
vs. Ga. Southwestern
Feb. 22
6:00 PM

Laker Basketball Update

*Sports Information Courtesy of
Public Information*

The Clayton State men's and women's basketball teams picked up huge victories over LakerFest week-end. The Lakers (13-12) snapped a four-game losing streak and moved one game over .500 with an 84-61 victory over LaGrange, while the Lady Lakers (14-7) earned one of the biggest wins in their four-history with a 76-69 win over Emmanuel.

The Lady Lions opened their season with an 89-73 win over Clayton State. And this time they came to Morrow with a 17-3 record and votes for a top 25 national ranking. But Candi Wyatt and Lisa Williams fueled the Lady Lakers' upset with a combined 36 points on 15-23 field goal shooting. The win continues the Lady Lakers' most successful season ever.

CSC never trailed in the first period, but Emmanuel tied the score six times and trailed by just two points at halftime. A 15-3 run midway through the second period gave the Lady Lakers a 57-43 lead, but the Lady Lions stormed back with 13 straight points.

CSC padded its lead to seven points with four minutes left, but Emmanuel rallied again to close to 72-68 with 54 seconds remaining. The Lady Lakers struggled early from the free throw line, but Traci Tankersley and Williams each hit two charity shots in the final 25 seconds to seal the win.

The CSC men's team needed a big victory like the one it earned over hapless LaGrange. Aside from losing four straight games, the Lakers hadn't

won by more than six points since an 84-70 win over North Georgia 11 games ago.

Helped by Jason Scott's 11 first period points, the Lakers ran up a comfortable margin early in the game and cruised to victory. CSC never trailed in the contest and ran up its biggest lead of 63-36 at 11:40 of the second half. The Panthers could get no closer than 13 points the rest of the game.

Shooting guard Josh Kammerer started in place of injured Ryan Amestoy and led the Lakers with 19 points on 5-8 three-point shooting. Scott finished with 17 points while Kevin O'Brien scored 15.

The CSC men's team plays at home on Thursday, Feb. 9, when it hosts Lee College at 7:30 p.m. The women's team plays five road games before returning to Morrow for a game Feb. 22 against Georgia Southwestern.

**SGA
MEETINGS**

**12:30 PM
D-108**

Fridays