

The Bent Tree

The Student Newspaper of Clayton State College

Week of May 16, 1995

Volume
XXVI



Issue
XIV

CSC Newest Member of NCAA

by Zamzam Syed
Staff Writer

The winds of change are sweeping through all aspects of CSC. The area recently struck by a tornado? The sports department. The major changes include: the move from NAIA to NCAA division II; the addition of five intercollegiate sports; the announcement of six coaches to meet the needs of the growing athletic program.

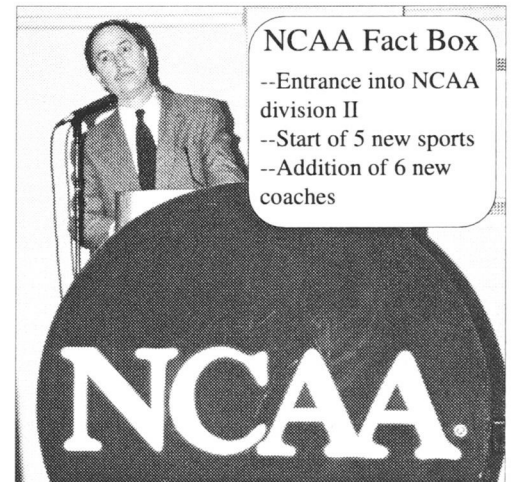
According to President Richard A. Skinner the purpose behind the growth of the program is to "recruit outstanding student athletes, help them be competitive, and acquire student athletes who will graduate from the school. The move to NCAA will provide the students with greater opportunity, financial backing and will enable the Lakers to have a higher

profile among college athletes."

Among the additional sports are: men's and women's cross country, men's golf, women's soccer, and women's tennis. The new coaches include Jimmy Hebron, who has been an assistant coach to Bobby Cremins at Georgia Tech since 1981. He will coach men's basketball. He is very excited about CSC and said he chose the school because it provided him with an opportunity to have his own program. Coach Hebron emphasized the word "student" in the phrase "student athlete" because "for most people, the degree they earn in college will take them farther than basketball." Hebron said he will insist upon academics as much as sports training. He also asserted the need for recruiting area high school students to CSC and to the new athletic programs.

The other coaches include; Mike Mitchell, who will head men's and women's soccer. Mike Mead and Hugh

See NCAA continued on page 6



NCAA Fact Box

- Entrance into NCAA division II
- Start of 5 new sports
- Addition of 6 new coaches

President Skinner speaks on CSC's NCAA plans. Staff Photo

Bolander's Career Switches Gears

by Alan Murphy
Editor in chief

The sudden reassignment of Robert Bolander, which ended his 24 year association with CSC and 23 years as its Dean of Students, has left the college faculty shaken, but not stirred.

Bolander, who joined the college in 1970 as an Assistant Professor of History and Director of Student Activities was appointed Dean of Students in June of 1971. He has



Former Dean of Students,
Robert C. Bolander

See Bolander continued on page 2

Admission Standards Going Up

by James Taylor
Staff Writer

In the past, it has been relatively easy to become a freshman at CSC. Now, CSC will demand more from the incoming freshmen in order to ensure the college's own success.

The main reason given for the raising of admissions standards is the fact that CSC has one of the worst retention rates throughout all of the institutions in Georgia. For instance, the range in first year retention rates at the same institution is from 51% at CSC in 1992-93 to over 86% at Georgia Tech in both 1990-91 and 1992-93 . . . From Fall 1985 through Fall 1993, same institution student retention rates for the entering class of 1984 declined by as little as from one-fifth (i.e., from 83.7% to 68.1%) at Georgia Tech to more that three-fourths (i.e., from 55.9% to 16.8%) at CSC.

The reason for our 51% retention rate plainly evident in our old admissions standards, which are as follows:

High School Graduates:

See Standards on page 3

Campus News

recently been relieved of his Dean of Student duties and reassigned to work with the Atlanta Project

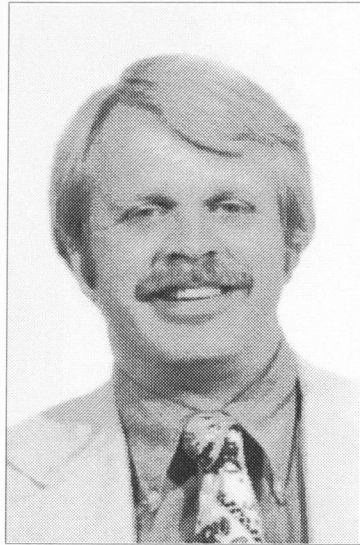
On April 28, the Enrollment Management Working Group, chaired by Robert Bolander, submitted a recommendation to President Skinner concerning--from the memo sent to the president-- "Not simply the function of Enrollment Services, Student Services and Student Life, but the responsibility of faculty and staff as a collaborative effort it instruct, recruit and advise." This memo outlined a new configuration which would combine the Student Services, Enrollment Services and Student Life areas into one large entity.

"We can no longer afford to keep student services and enrollment services apart," said President Richard Skinner about the reasons for the combination. "I think that we are looking for an administrative position and organization of structure that allows us to bring the services to students that they need."

This is the heart of the matter. CSC is on a mission to actively recruit students from area high schools to attend. Therefore, the services to the students and the enrollment of the students must be under one roof.

However, under simple scrutiny of that new orientation the position of Dean of Students is not there. There simply is no place to put a Dean of Students.

"In that arrangement you are talking about someone to coordinate all



Photographer wishes to remain anonymous
Dean Bolander in 1970

of [the Student enrollment and services] functions. That position is, for lack of a better term, the Vice-President/Dean of Students and Enrollment Services," said Robert Bolander. "Therefore [the Dean of Students position] is gone when you make that shift," he continued. "Of course, the question is 'what happens to the person in that position?'" Bolander mused.

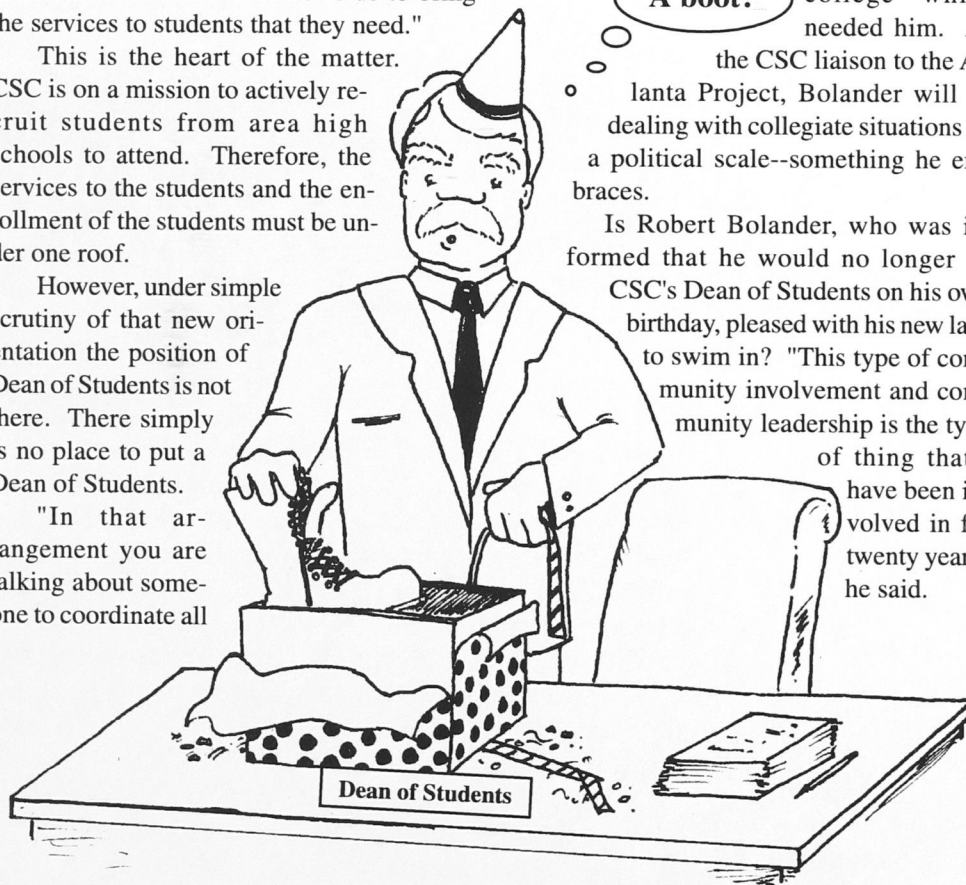
So President Skinner, after sending a letter which relieved Bolander of his duties as Dean of Students, approached the former Dean of Students with another position

with the college. Bolander explained his new position with CSC: "It is going into a position as Assistant to the President responsible for liaison with the Atlanta Project."

So Robert Bolander was assigned to another area of the college which needed him. As the CSC liaison to the Atlanta Project, Bolander will be dealing with collegiate situations on a political scale--something he embraces.

Is Robert Bolander, who was informed that he would no longer be CSC's Dean of Students on his own birthday, pleased with his new lake to swim in? "This type of community involvement and community leadership is the type of thing that I have been involved in for twenty years" he said.

A boot?



Happy Birthday!!!

The Bent Tree is:

- | | |
|--|---|
| Editor in chief
Alan Murphy | Staff Writers
Kim Jones
Zamzam Syed
James Taylor
Cynthia Watkins
James E. Williams
Robert Young |
| Assistant Editors
Beverly Burns &
Aimee Ford | |
| Distribution
Manager
Melissa R. Mayo | Creative Director
Thomas Stafford |
| Faculty Advisers
Nancy Green
Richard Mason | |

The views expressed in *The Bent Tree* are not necessarily the views of the student body, administration, and faculty of CSC. Signed editorials represent the opinion of the writer and may or may not reflect the opinion of the staff. Unsigned editorials are presumed to reflect the opinion of the staff of *The Bent Tree*.

The Bent Tree welcomes opinion and commentary from members of the College community in the form of "Letters to the Editor" or "Free-lance Submissions." These submissions should be sent to *The Bent Tree* by depositing them in *The Bent Tree* mailbox in D-223 or given to any member of *The Bent Tree*.

All submissions should be typed, single-spaced, and placed on computer disk under format Word Perfect 5.0. Submissions are subject to standard editing based on space availability. All "Letters to the Editor" must be signed, but names may be withheld for valid reasons. Unsigned letters will not be published. All submissions should also include the social security number of the person writing the submission (for complete identification purposes). For further definition of "Letter to the Editor" or "Free-lance Submission" see any staff member of *The Bent Tree*.

The Bent Tree is published under the direction of the staff of *The Bent Tree*. *The Bent Tree* is published a minimum of four times per quarter during the fall, winter and spring quarters.

Campus News

CSC Music Professor Arranges Movie Scores

Courtesy of Public Information

The sound track for the MGM movie "Rob Roy" includes two songs furnished by CSC professor Lyle Nordstrom. Nordstrom, head of CSC's Department of Music, arranged the Elizabethan pieces "Nuttmigs and Ginger" and "Green garters" which accompany the swashbuckling movie's two most climactic scenes.

Producers of the movie, which stars Liam Neeson and Jessica Lange, approached Nordstrom during filming and requested permission to use the pieces which were recorded by his chamber ensemble "The Musicians of Swanne Alley." Nordstrom performs with and co-directs the six-member group.

In the songs Nordstrom plays the lute

and the pandora, a 14-string guitar of which he is a recognized authority. His wife also a member of the ensemble and a professional musician, accompanies the arrangements on songs are period the movie, some they chosen to distinguish those scenes with a type of music that had a more 'period' flavor than the rest of the sound track," Nordstrom said.

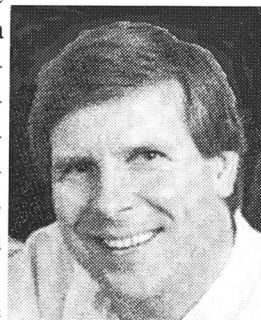


Photo by Irene Young

**CSC Faculty
Member Lyle
Nordstrom**

Nordstrom arranged "Nuttmigs and Ginger" from sections of an anonymous 16th century manuscript of Elizabethan folk tunes. Because parts of the book were missing, he wrote and reconstructed the absent passages so the song could be performed by The Musicians of Swanne Alley. "Green garters" was originally composed by John Johnson (d. ca. 1595), who also wrote "Greensleeves." Both pieces can be heard on two of the group's CD's, "Popular Elizabethan Music" and "In the Streets and Theatres of London." The Musicians of Swanne Alley will appear in Spivey Hall on the CSC campus during the 1995-96 season, performing these pieces as well as other Scottish music.



Standards continued from page 1

- a. Verbal SAT score of 250 or higher or ACT english score of 13 or higher
- b. Mathematical SAT score of 280 or higher or ACT mathematical score of 14 or higher
- c. High School Average (on academic courses only) or 1.80 or higher on a 4.00 scale.

From looking at the above criteria, you can clearly perceive just how undemanding we were of incoming freshmen. It really pains me to see how naive CSC was to even ask why the retention rate was so poor, especially when we have one of the most demanding and rigorous programs in the state. Go figure.

CSC has decided to boost its admissions standards in hopes of gradually solving this dilemma. Keep in mind that this decision was intended to aid in improving the retention of our students and NOT to decrease enrollment. The new policy is as follows:

High School Graduates

- a. SAT I score of 330 verbal or ACT english score of 13 or higher
- b. SAT I score of 310 math or ACT

mathematical score of 14 or higher

- c. High School Average (on academic courses only) or 2.0.

Basically the new policy insists that you to meet ALL of the criteria, whereas the old policy required you to meet only one of the three. The SAT scores are higher only due to the change of its format; they are essentially the same. CSC also requires you to now have a GPA of 2.0, whereas before only a GPA of 1.8. And according to Dr. Bradley R. Rice, "it has been statistically proven that students with a GPA of less than 2.0 are not very likely to succeed in college level courses. This is further reinforced by a study by the University System of Georgia where it states that . . . institutions that admit freshmen with higher average SAT scores and high school GPA's generally retain a higher proportion of those students."

And as with any new policy, there will always be exceptions. Students who, for whatever reason, have a GPA of less than 2.0 and score exceptionally well on the SAT I can still be admitted under special circumstances. Which are as follows:

High School Graduates (with GPA < 2.0)

- must have SAT I scores of 530 verbal and 480 math
- will be admitted on academic probation
- must take the Georgia Collegiate Placement Examination and be required to take Learning Support courses as indicated
- must take SARS 099 regardless of CPE score.

(students who are on probation are subject to immediate dismissal if they cannot obtain a "good academic standing" status during the probationary period, whereas students who are currently in good standing have the luxury of going through the probationary period, and then being dismissed.)

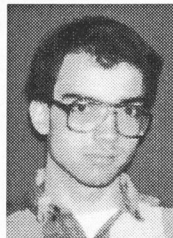
Whether or not the new admissions standards will prove to have a positive impact remains to be seen. But, according to Richard A. Skinner, "I remain convinced that higher admissions standards will assist us in improving the retention of students by providing them and us greater assurance of their readiness for college level academics."



O p i n i o n

Too Good For The Average Student???

by
**Robert
Young**
Staff
Writer



It seems one cannot spend a day at CSC without hearing of yet another fee increase or plans to raise the admissions standards. From the athletic fee being doubled to \$48.00 to 2.5 GPA minimums, it is getting increasingly more difficult for students to get an education here.

The other day I heard transfer students from Georgia State University saying that CSC was harder than GSU and the University of Georgia, and that they planned to go back from whence they came.

The prevailing logic among the establishment is that CSC does not get the respect it deserves and that increasing the admissions standards, making it more expensive to go here and abolishing developmental studies courses will weed out "ordinary" students, leaving a remnant of the professional and intellectual elite. This supposedly would enhance CSC's reputation amongst the establishment. However, in trying to shed its "community college" image, CSC threatens to lock out the very students it was designed to serve.

CSC was founded to serve the needs of south metropolitan Atlanta, the suburbs in particular. For people who had to work, could not afford to go to a major university, or just didn't like the mean streets of the big city, CSC, originally Clayton Junior College, filled a need that was not being met. The upgrading of CJC to CSC further helped by providing bachelors degree opportunities in business and nursing. The technology department provides two-year degrees in such fields as avionics.

CSC continues to expand to meet the

need of its students. This helps to explain the rise in enrollment in the late '80's, from 2,900 in 1987-1988 to 4,045 average in 1991-1992.

However, enrollment has been dropping lately. One only has to listen to students around campus to see why. Not only is CSC tougher than GSU or UGA (statistics from transfer students' GPA's show they have better GPA's at the other places than here), but a degree from CSC carries less weight than one from a long-established university. Some people have chosen CSC anyway because it is cheaper; however, the price gap is being narrowed by people all too eager to see CSC tuition and fees "in line" (that is, as high as the others) with larger colleges and universities.

At the same time, plans are in the works to raise GPA admissions standards from 2.0 to 2.5, after having just raised them from 1.8. It seems one raise is enough. Sometimes people think that if something works once it will work again. Overreaching for power has doomed many a dictator.

Plans to raise SAT minimums are less of a problem, being as they are currently very low. But the rumored cutting back or doing away with developmental studies shows that CSC's commitment to the "common people" may be ending.

Why do we really need a drastic raise in the admissions standards anyway? Do borderline students really hurt CSC? Unruly behavior is not tolerated here, so that cannot be a reason to raise the standards. People who would pay all that money for an education must be serious about what they are doing, so that can't be it.

The real reason they want to raise the standards is to help CSC's image problem. Those who would make this, and not the students, their primary concern are snobs

too busy sticking their nose in the air to realize they could be shutting out real people from an opportunity to make it in this world.

With the gap between the rich and poor in this country growing tremendously since 1989, and with many blue-collar jobs disappearing, many people are struggling to make the transition to the world of high-tech and computers. Some are succeeding, with the result that college degrees are becoming common. Attempts to change this trend (by making college degrees harder to get) by those already on the highway of success are merely elitist attempts to shut out the masses. Only when we realize that everyone deserves an equal chance to succeed, an idea emulated in Horatio Alger novels, will this country truly prosper as the land of the free.

Why not let the process of natural selection--grades earned while in college--determine who has a right to go here. Many students who do not do well in high school were immature at the time and often find their real calling later. If someone does not belong it will not take them long to find out. Besides, it would be better to have more students so college costs can be lower for each individual.

Ironically, a similar article to the one I am writing came out in the Athens Daily News (UGA: Elitist or Accessible University?) by Lee Shearer. The same debate going on here is also taking place there. The only difference is that the UGA President, Charles Knapp, is dealing with the issue openly and candidly, and getting input from the community. At CSC decisions are usually made secretly and then announced. This institution would do well to follow President Knapp's example and stop treating this place as a country club for the Good 'Ole Boys.



Letters to the editor may be submitted to The Bent Tree via electronic mail at the address *benttree*.

Local Girl Rises To Top Of Percussion Field

by
**Aimee
Ford**
Assistant
Editor



One of CSC's own has left Atlanta, travelled to the bay area of California, and is now a part of a world championship organization.

Amy Hayes, who has been playing various percussion instruments for the past eight years, left Georgia on May 13 spend the next three months getting up at 5 am and sleeping on tour buses in Concord, California. Actually there is another important reason for Amy's trip to the west coast.

A former section leader for Southwind Drum and Bugle Corps, Amy is now a member of The Blue Devils. The Blue Devils were the world champions for Drum and Bugle Corps placed previous year. Now our very student has them.



**Local percussionist
Amy Hayes**

Corps touring states almost non-stop for the next few months and will be competing with some of the most skilled corps in the world. In

addition to the responsibilities that go hand in hand with performances, the members of the corps spend countless hours traveling from city to city, setting up for performances, and practicing.

Amy is one of the talented musicians playing in the pit. The instruments she plays are those that would be seen at the sidelines of a football field at half-time because they are too large to march with. Instruments in the pit include small snare drums, xylophones, mallet percussions, and a wide range of other instruments.

According to Amy, despite the hard work and long hours, she enjoys the tour very much because of the "thrill of being a Blue Devil...the performance, the uniform, the audience."

The next three months will be memorable for Amy and we wish her and the rest of the Blue Devil Corps the best of luck.



Dr. Richard Skinner (right) accepts a scholarship contribution from Natalie Hynson, SGA President. The check is for \$211, which was raised by students operating a dunking booth at last fall's Southern Crescent Celebration. The money will go into the scholarship fund of the CSC Foundation. Since the Southern Crescent Celebration, more money has been raised by SGA due to the annual Spring Fling.

Photo courtesy of public information

Entertainment

CSC Student Plots His Future

by
**Beverly
Burns**

**Assistant
Editor**



ATTENTION!! ATTENTION!! We have here on our small and diverse campus a man that is not just any man--he is Brad Fairchild. Who is Brad Fairchild? What?! Do you not see any posters on the walls or read your e-mail? Brad is a student here at CSC, and he has written a most phenomenal play . . . "What Rough Beast Slouches." This play will be performed by students from our very own college at 14th Street Playhouse in Atlanta, and will be benefiting the AID Atlanta project. This is quite a notable experience for someone that has never before written a play!

What is the play about? Being the wonderful person that I am, I will give you a brief description: This play is set in pre-World War I Germany. The Kaiser is on his throne and all is well with the world--or is it?! Is the Kaiser really in love with a man, or does he love his wife? And what is the big deal about all this anyway? Is the reason that W. W. I was started really because one man was violently opposed to the Kaiser's supposed homosexuality? Well, the only way for you to have found out is to have gone to the play. Maybe you could wait for the movie? Personally, I believe that you need to go to the play, you



Brad Fairchild and Dr. Larry Corse talk about Fairchild's play.

never know if you will get the true vision of it at the movies!!!

Brad decided to write this play because he had read a story based on the life of the Kaiser, and thought it seemed quite interesting, and, as he said, it read like a "drama." So, we have the plot. Brad went to CSC's own drama teacher, Dr. Larry Corse, for help in writing this play, and Dr. Corse tells him that he needs to enroll in the Drama class that he would be teaching in that upcoming quarter. Brad, therefore does that, and finds that he is not learning to write plays. He eventually gets the help that he needs, and writes a play that has

captured the thoughts of many of our country's renown authors, and playwrights.

Now, AID Atlanta has been brought into this whole menagerie of activity, and the show's proceeds will be benefiting that project

Brad never expected anything like this to come from his desire to write this play, and he still feels nothing of the possible fame that he might achieve. Brad is still one of the nicest, most soft spoken, and intelligent people that this campus knows. I truly believe that even when the ultimate fame of this play is reached that Brad Fairchild will still be a calm, helpful, friendly man.

He is working right along with the actors and the crew in getting this play to the stage. What Rough Beast Slouches has already received quite a lot of rave reviews and Fairchild is definitely on his way up in the world of playwrights.

NCAA from page 1

Toro will coach cross country. Jolyn Smith will coach women's tennis and also be an assistant to women's basketball. Robert Pendergraft will work with men's golf.

Finally, Mason Barfield addressed the of college athletics on the whole" Barfield said and continued to say that "this is important because even if one does not

benefit from the program at this college some time in the future, their children or someone they are close to may want to be involved in college sports." This, the CSC sports information director and future cross country coach said, is the importance of supporting the institution of college sports.

Interested in joining our staff?
Contact Alan Murphy at jmur401

Computer News

Electronic Mail: Do You Know Your Options?

by
**Aimee
Ford**

**Assistant
Editor**



In the last issue of *The Bent Tree*, I told you about checking, reading, and deleting your e-mail. There are, however, literally dozens of other options you should be aware of.

First of all, if you check your e-mail and you find something you think someone else would enjoy, you can send that special someone a copy of the message without retyping the entire thing. After reading the message, press ESC to go back to your folder of messages. Then you need to press the letter "F" for forwarding a message. A green box will appear. The

box first asks who to send the message to. You should type in their e-mail address and press ENTER.

The next question is if you'd like to edit the message before sending it. If you want to send it as is type "N". If you'd like to add your own emotional, meaningful, or humorous message type "Y". Then it asks accept/continue and you press ENTER.

The computer can also do something for you that the mailbox on your curb at home never dreamed of doing. It can throw away mail before you even look at it.

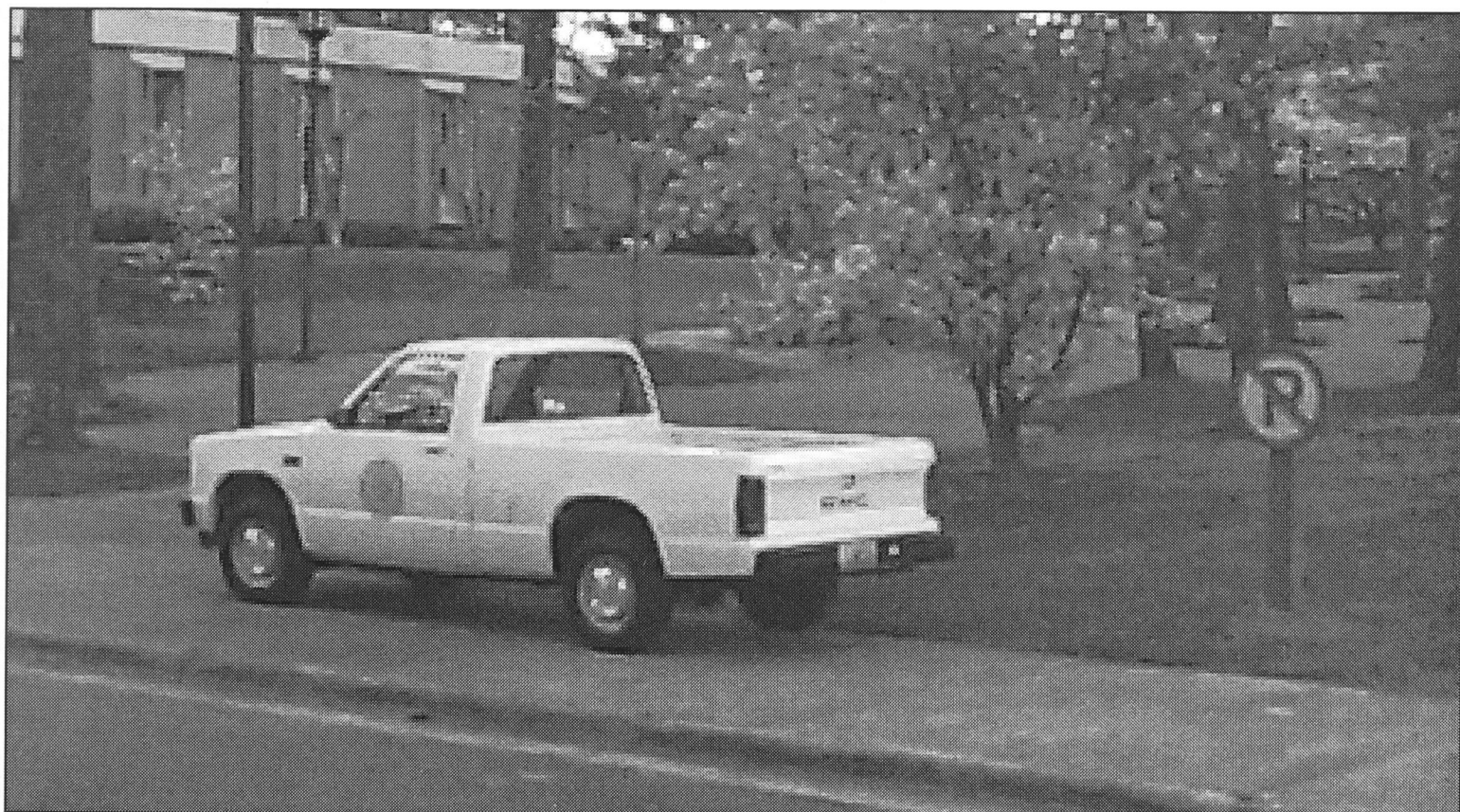
Are you constantly getting mail from someone you wish had never gotten your address? Here's how you can solve that minor annoyance... Go back to your main Pegasus E-Mail menu where it asks you to check new mail, browse messages, and that sort of thing. Go to preferences. Under preferences, you need to go to new mail filtering rules. When that magical green box appears (don't you just love green?)

press INSERT.

Next, with the wonder of color, a blue box appears. It asks what field. You should press ENTER. A black dialogue box then offers such options as FROM, CC, TO, etc. You need to choose FROM, press the space bar, and press ENTER. Next to the question "Contains", type the name of the person you do not want mail from and press ENTER. Then the computer wants to know exactly what you want it to do with the messages. Again, press ENTER to get another black box of Actions. Go to DELETE and press ENTER. Accept and continue? Yes, absolutely.

Now see, you have got your own personal watchdog ready to nip at the ankles of your computer "postman" before he drops off any annoying messages. Isn't that great?!

Oh, look at the time. That's it for this issue. Look forward to upcoming issues.



Someone explain the sign on the right to Cecil Smith.

by
 Thomas
 Stafford
 Creative
 Director

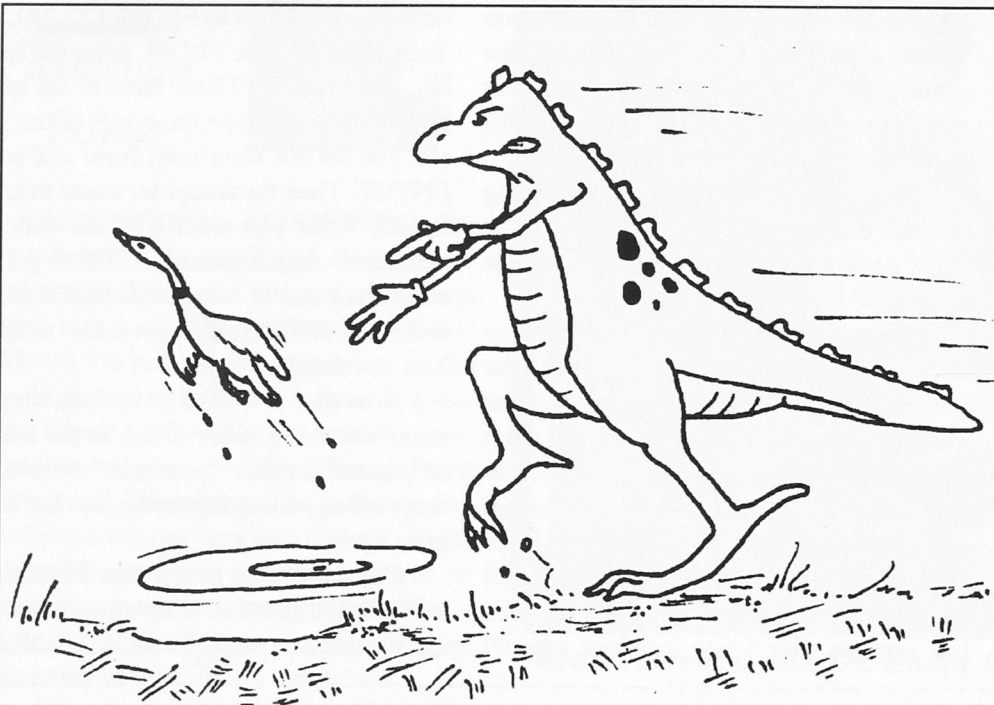


If you have anything that you would like to "vent" or simply offer to the humor page, PLEASE e-mail it to us at benttree.

Top 10 List...

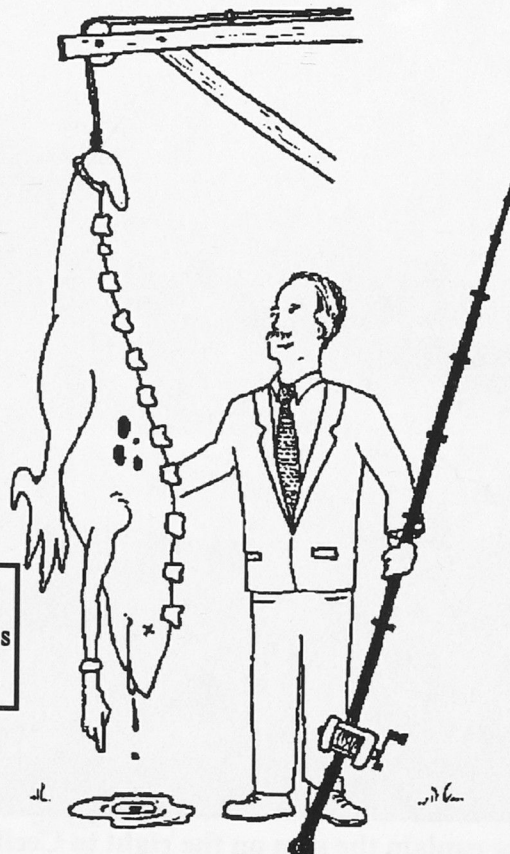
...of things that suck at CSC.

10. Computer lag
9. Kids in the computer labs
8. Loud babies in Spivey Hall
7. Tenured professors
6. Slow ducks
5. Fast ducks
4. Books that cost more than classes
3. That mascot thing
2. Lab assistants
1. 7:30 a.m. classes



After complaints from the local bird community, President Skinner takes matters into his own hands.

Fishing
 and Mascots
 Prohibited



The Bent Vent

TELL IT LIKE IT IS.

- Why are there no sidewalks to the surrounding apartment complexes?
- There is no support for the Macintosh computers or Media Services.
- I was behind the college the other day--what is the razor wire for?
- Campus trucks--get them out of the walkways please

We at The Bent Tree would like to congratulate Ray Boyd! We heard that he had a date!!!