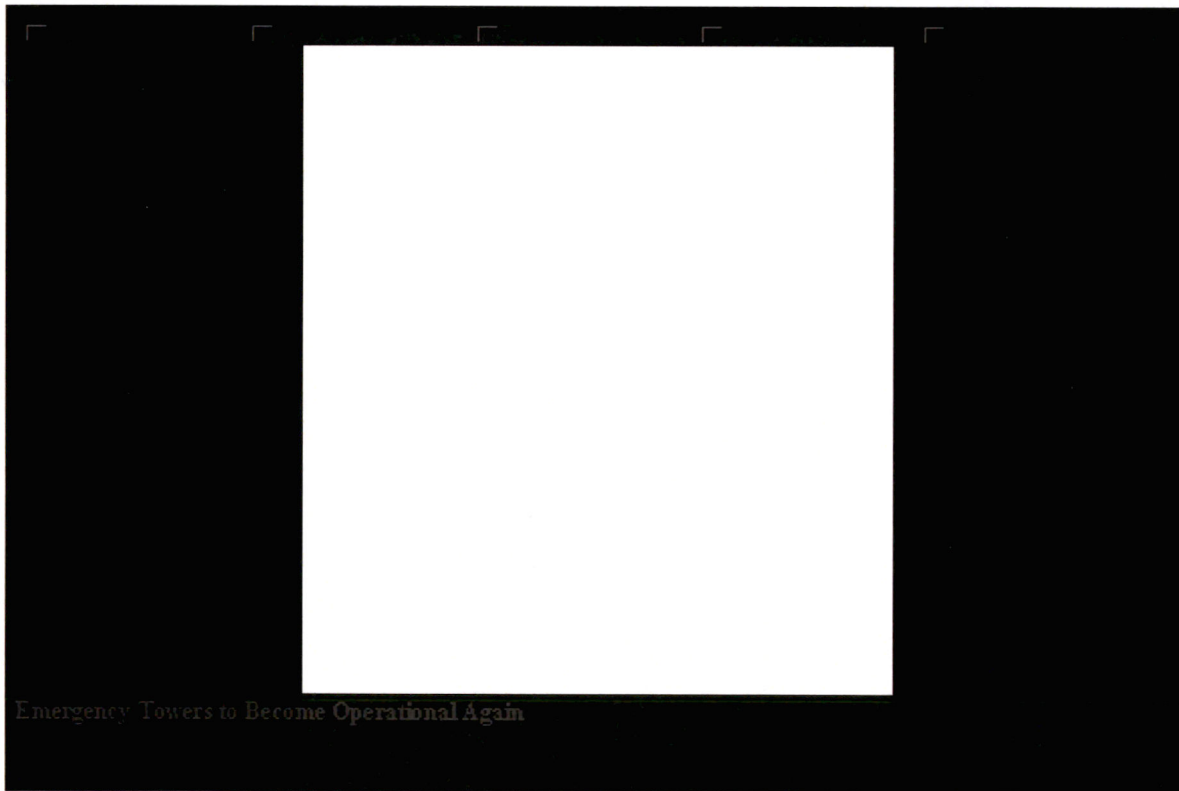


The Bent Tree

Clayton State University's student newspaper

- [About](#)
- [Staff](#)
- [Follow us on Twitter!](#)

- [Home](#)
- [Features](#)
- [Greek](#)
- [News](#)
- [Opinion»](#)
- [Photos & Videos](#)
- [Sports»](#)



News



[Emergency Towers to Become Operational Again](#)

All of the 16 emergency towers situated throughout campus will soon be working ... [\[Read More...\]](#)



[SB 308 Changes Gun Restrictions on Campus](#)

Signed by Gov. Sonny Perdue this summer, SB 308 allows licensed gun carriers ... [\[Read More...\]](#)



[Student Part-Time Job Fair](#)

Astari Johnson, right, talks with FedEx representatives Tuesday during the student ... [\[Read More...\]](#)

Opinion



[Hate Long Lines @ the Hub? Try LANDesk](#)

The beginning of another school year is upon us. That means there will be a ... [\[Read More...\]](#)



[Welcome to Your New Bent Tree](#)

Staff reports We've made a few changes to your newspaper, including a redesign ... [\[Read More...\]](#)

Sports



[CSU Soccer Scrimmages](#)

Both the Clayton State men's and women's soccer teams scrimmaged at home on ... [\[Read More...\]](#)



[With the Help of New Recruits, Soccer Squad Looks Solid](#)

The CSU men's and women's 2010-11 soccer teams are gearing up for this season. By ... [\[Read More...\]](#)



[Cross Country Teams Looking Good This Season](#)

The 2010 women's and men's cross country track teams are expecting an exciting ... [\[Read More...\]](#)

Features



[Ms. Candy: Meet the Lady Behind the Ladle](#)

Ms. Candy, who works in Lakeside Cafe in the University Center, wants students ... [\[Read More...\]](#)

Photos & Videos



[Greek Life: Letters and Colors](#)

Members of the Fraternity and Sorority Council speak during the "All I See Are Letters and Colors: What Does It All Mean?" ... [\[Read More...\]](#)



[Student Involvement Fair](#)

The Student Involvement Fair, held Thursday outside the Student Activities Center, allowed students the opportunity to learn ... [\[Read More...\]](#)



[Perusing Posters](#)

Students look through posters for sale in the University Center Wednesday. Representatives from the store Beyond the Wall ... [\[Read More...\]](#)



[Studying Under the Sun](#)

Avery Crow, a home schooler who is dual-enrolled as a nursing major, studies Tuesday while soaking up some rays by Swan Lake. ... [\[Read More...\]](#)



[First Day Back](#)

As classes started for fall term Monday, CSU was full of activity. (Photos by Kevin Liles/The Bent Tree) ... [\[Read More...\]](#)

Search bentreenews.org

Search this website...

Search

Weekly Poll

How much do you study each day?

- less than 1 hour
- 1-2 hours
- 2-3 hours
- more than 3 hours
- none

pollcode.com [free polls](#)

Welcome to The Bent Tree

We hope you like The Bent Tree's new website! We've been really busy over the summer working on this site and are looking forward to keeping you informed and entertained about everything Clayton State. Feel free to email us with suggestions or news tips: editor@benttreenews.org

stay in the know!

Subscribe to our Feedburner and get instant updates and news!

Enter your email address

Categories

Select Category

Archive

August 2010

M T W T F S S
 1
 2 [3](#) 4 5 6 7 8
 9 10 11 12 [13](#) [14](#) [15](#)
[16](#) [17](#) [18](#) 19 [20](#) [21](#) [22](#)
 23 [24](#) 25 26 27 28 29
 30 31
[« Jul](#)

Links

- [Clayton State University](#)
- [Clayton State Athletics](#)
- [Clayton State Radio](#)
- [Clayton State TV](#)
- [WordPress login](#)
- [Staff email](#)

Find us on Facebook



The Bent Tree

Like

The Bent Tree "Temporarily Out of Service" signs soon to come off all the emergency call towers on campus: <http://bit.ly/bqUgfG>



Emergency Towers to Become Operational Again — The Bent Tree

bit.ly

All of the 16 emergency towers situated throughout campus will soon be working again. (Photo by Kevin Liles/The Bent Tree)

Tuesday at 4:53pm

The Bent Tree Check out photos from the men's and women's soccer scrimmages on Saturday: <http://bit.ly/bSfzw9>

CSU Soccer Scrimmage — The Bent Tree

bit.ly

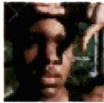
30 people like The Bent Tree



Kevin



Wendy



Kamau



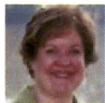
Linda



Sarah



Virginia



Susan M.



LMichelle



Carrie



Shelley



Facebook social plugin

[Return to top of page](#)

Copyright © 2010 · [Church Theme](#) on [Genesis Theme Framework](#) · [WordPress](#) · [Log in](#)

The Bent Tree

About

The Bent Tree is the news source for Clayton State University, located in Morrow, Georgia. In addition to our news website, The Bent Tree publishes a print edition the first week of the month September through May. We are a student-run organization under the arm of CSU's Department of Campus Life.

Staff

Editors

Editor-in-Chief: Kevin Liles ([email Kevin](#))

Managing Editor: John Zinko ([email John](#))

Assignments Editor: Brittany Webb ([email Brittany](#))

Writers

Photographers

Advisors

Faculty Advisor: Dr. Randy Clark, *assistant professor of communication and media studies* ([email Dr. Clark](#))

Student Media Advisor: L. Michelle Hayes ([email Ms. Hayes](#))

Welcome to Your New Bent Tree

August 15, 2010 By benttreenews.org

Staff reports

We've made a few changes to your newspaper, including a redesign of the print edition and the launching of a website, www.benttreenews.org

We call it your newspaper because that's exactly what it is. The Bent Tree is here to serve the entire student body of Clayton State University. We want to entertain, educate and inform — but mostly importantly — we want to engage you in the news-gathering process.

We are excited to bring you these changes, because we feel that you deserve it. We want to be the news source for CSU. We've opted for the smaller, more feature-oriented style for the print edition, in the hopes that it will engage more readers. We know that reading newspapers is not something many young people do, but we hope this is one that you will look forward to each month.

In addition to the changes to the print and electronic versions of the paper, we have some new members on staff.

Brittany Webb, a junior communications and media studies (CMS) major, is the The Bent Tree's assignments editor. She worked as a reporter for the newspaper last semester, covering a range of assignments. For this edition, she wrote about CSU's golf team, the men and women's soccer teams, and the men and women's cross country teams.

Brittany worked as an intern for the U.S. Forest Service this past summer in their Public Affairs Office.

"I am so glad to be a part of The Bent Tree," Brittany said. "I've always loved writing and the newsgathering process, and now I can take it to the next level."

John Zinko is the new managing editor for the paper. John has also previously worked for The Bent Tree, writing restaurant reviews, as well as other topics. John is a senior CMS major who plans to graduate in the spring. This summer, he worked as an intern for Proect 9-6-1 radio station.

"I feel lucky to be able to bring a new direction to an organization like The Bent Tree," John said. "I look forward to this opportunity."

Serving as the new editor-in-chief is Kevin Liles. Kevin worked as co-editor-in-chief alongside Jennifer Sawyer during spring semester. Kevin, a senior CMS major, works a freelance photographer and assistant for Sports Illustrated magazine.

"I am honored to serve the Clayton State campus," he said. "I hope the new changes we've implemented for The Bent Tree over the summer help us to better communicate news to the student body."

We hope to cover all the topics and events that are important to CSU.

The Bent Tree is a student-run organization under the umbrella of Campus Life. It is paid for by student activity fees. All CSU students and faculty members can contribute to the newspaper. And as our masthead states on page two, we encourage letters to the editor. If there's something you feel strongly about, including our coverage or lack of coverage, please let us know in a letter.

Also, please let us know what you think of the changes we've made to the paper. Feel free to drop us a line at editor@benttreeneews.org or give us a call: 678-466-5436.

Emergency Towers to Become Operational Again

August 24, 2010 By benttreenews.org



All of the 16 emergency towers situated throughout campus will soon be working again. (Photo by Kevin Liles/The Bent Tree)

By Kevin Liles
Editor-in-Chief
kliles@benttreenews.org

Eight of the 16 emergency call towers on campus are now operational, and CSU Public Safety Director Bobby Hamil said the others will soon follow.

“This has been a peeve of mine,” Hamil said in a recent interview, referring to the towers not being functional.

The 16 solar-powered towers were installed about three years ago to give students a direct line to public safety in an emergency. So far, they have only been used a couple of times when students had car trouble. The towers started showing signs of trouble about six months ago.

“They would work fine during the day, but some of them would not work at night,” Hamil said. “The batteries would not hold a charge through the night.”

All the batteries were replaced, but the problems persisted. Hamil found a vendor in Texas that came out to work on the units.

“They told me that the cells were bad in the towers, so I told them to replace eight of them,” Hamil said. “I wanted to make sure this was the problem before going through the expense of replacing all of them.”

So far, those are working fine and have had the “temporarily out of service” signs removed.

Though the towers have not been used in an emergency situation, Hamil said he believes they are a great deterrent for crime on campus. However, he said using a mobile phone to contact public safety is quicker than using the towers.

“During orientation, I tell all of the students to put our phone number on speed dial on their phones,” he said. “The only problem with that is if you couldn’t speak, we wouldn’t know where you were on campus,” he said.

Some campuses in Georgia have taken emergency towers down because they were not being used, though Hamil did not indicate whether that is an option for CSU.

The phone number for CSU Public Safety is 678-466-4050.

SB 308 Changes Gun Restrictions on Campus

August 21, 2010 By benttreenews.org



Signed by Gov. Sonny Perdue this summer, SB 308 allows licensed gun carriers to bring in their cars. (Photo courtesy of www.publicdomainpictures.net / <http://bit.ly/alsTQu>)

By Kevin Liles
Editor-in-Chief
kliles@benttreenews.org

A new law that went into effect this summer loosens some restrictions concerning handguns on campus.

Georgia Senate Bill 308, otherwise known as the Lawful Carry Act and sponsored by Sen. Mitch Seabaugh (R-Sharpsburg), was signed into law by Gov. Sonny Perdue on June 8. Among other things, the law allows those who are legally licensed to carry handguns in Georgia to bring them on campus, as long as the gun is secured in a vehicle. The law also eliminated a buffer that made it illegal to bring a firearm within 1,000 feet of a college campus.

In an interview, CSU Public Safety Director Bobby Hamil said he was not particularly worried about the changes.

“I don’t have any concerns with the law as it stands,” he said. “All this law does is more narrowly define the locations where can carry a gun with a license.”

To obtain a permit to carry a handgun in Georgia, one must be 21 years old and not be a convicted felon. There are about 300,000 people licensed to do so in Georgia.

The University System of Georgia's Board of Regents was opposed to the passage of the law. Twenty-six of the 37 presidents of universities that make up the University System of Georgia, including CSU President Dr. Tim Hynes, signed a letter urging lawmakers to keep the law as it stood. The new legislation would prohibit guns to be carried in classroom, dormitories, research facilities and athletic events.

Another change in the law is how licensed gun carriers would be charged if they were to bring the gun outside of their car, such as in a building. Previously, such an act (by a licensed gun carrier) would be a felony: Now, it is a misdemeanor. However, if someone who is not licensed to carry a handgun is caught bringing one on campus, that charge remains a felony.

Hamil said there has not been a weapons-related arrest since he came to CSU more than two years ago. The last incident that may have involved a weapon was in January of last year.

A student reported seeing someone walking into the University Center with what appeared to be a handgun. Hamil dispatched many officers throughout campus, but no person with a weapon was found.

You can view the bill in its entirety here: http://www.legis.ga.gov/legis/2009_10/fulltext/sb308.htm

Student Part-Time Job Fair

August 17, 2010 By benttrenews.org



Astari Johnson, right, talks with FedEx representatives Tuesday during the student part-time job fair in the University Center (Photo by Kevin Liles/The Bent Tree)

By John Zinko
Managing Editor
jzinko@benttrenews.org

Today, students were greeted with an opportunity to make a little money while in school. The part-time job fair allows businesses to come to CSU and potentially hire students for work while they continue or begin their college career.

Some students filled out applications at the vendor tables while others came prepared in business attire and resume in hand. “This is like having an impromptu job interview,” said Matt Shelnutt, a senior majoring in biology. Hundreds of students showed up during the activity period to fill out applications for jobs at FedEx, Wal-Mart, Kaplan, and Pampered Chef, as well as other vendors.

Shelnutt was also at the job fair representing Clayton State’s peer-tutoring services along with Sophie Keeton, a junior majoring in English.

Hate Long Lines @ the Hub? Try LANDesk

August 15, 2010 By benttreeneews.org

The beginning of another school year is upon us. That means there will be a mad dash to clean off those nasty summer viruses, install software, and receive general assistance at The HUB. This means long lines.



By Chris Baldwin

The beginning of another school year is upon us. That means there will be a mad dash to clean off those nasty summer viruses, install software, and receive general assistance at The HUB. This means long lines.

As a HUB employee, it's a very trying time. Early mornings, late nights, and unbelievably long lines of frustrated students all wear me out. I don't want you to get the wrong idea, I love my job, but that's a lot of stress. I'm supposed to be there. I get paid for it. You, on the other hand, don't. So I'd imagine it's no fiesta for any of you, which leads us to ...

Good news everyone! The HUB has started rolling out a new era of service. This is all thanks to a program called LANDesk. LANDesk helps you manage your computer and your time in various ways. It allows you to keep your computer malware and virus free.

You can install Office from anywhere on campus, and remote service saves trips to The HUB, as long as you have an internet connection. You can find out more about LANDesk here:
<http://thehub.clayton.edu/landesk>.

The HUB has replaced F-secure with LANDesk Antivirus as the official antivirus of CSU. It's based on Kaspersky's Lab's corporate product. It's lighter and faster than our previous antivirus. That's great news for any student who noticed their computer slowing down as a result of using F-Secure.

It has a record of better virus detection and removal. Clean student computers make our network admins happy, and trust me, you don't want those folks upset.

Now, lets say you're interested in getting the ever-so-stylish Office suite to write that paper your professor wants. You are more than welcome to come into The HUB to have it installed. I should warn you, though, that all the cool kids are using LANDesk to install Office — even when The HUB is closed.

These stylish whippersnappers don't let hours of operation slow them down. They use LANDesk while

on campus to install software at their leisure. Don't you want to be hip too?

The absolute best feature in LANDesk is the ability to use remote service while on the phone with The HUB. You can show them what's wrong even if you don't speak the 'computerese' gibberish required to convey the problem.

I totally understand how awkward and embarrassing it can be to try to explain over the phone how that "doomerjabber" isn't moving on the screen.

Through remote assistance, HUB staff can see what's happening on your screen and instruct you how to fix the problem. What makes this even better is the respect of your privacy.

Some users may be worried about The HUB seeing personal information. The remote service option will only function after you have authorized it from your computer. Also, if you feel uncomfortable with the service, you have the ability to end the session at any point.

LANDesk will become more robust as The HUB integrates more features. Expect our service capabilities to expand to meet your needs on your schedule.

These new services will also help us use our time more effectively. I suspect more and more people will enjoy using LANDesk as an alternative to waiting in line late in the evenings. As much as I like seeing you all come into the HUB, I like seeing my new daughter more. That said, log into the SWAN and click on The HUB's tab to get started with LANDesk!

Chris is a contributing writer for The Bent Tree and a technical support specialist at The HUB. He can be reached at chrisbaldwin@mail.clayton.edu

With the Help of New Recruits, Soccer Squad Looks Solid

August 15, 2010 By benttreenews.org

The CSU men's and women's 2010-11 soccer teams are gearing up for this season.

By Brittany Webb

Assignments Editor

bwebb@benttreenews.org

The CSU men's and women's 2010-11 soccer teams are gearing up for this season.

"We have a small squad but a lot of experience," said Pete Petersen, head coach of the men's team. He has added nine new players to the roster this year.

The team now has new two forwards, four mid-fielders, one defender, and two goal keepers. New player Denni Lulic, a senior, will move to forward this year with returners Ryan Pugh and Leighton Fredericks, both juniors. Although Lulic was recruited last season, he was redshirted. Lulic comes from Tyler, Tex., where he attended Tyler Junior College, where he was named an NJCAA All-American.

Two other key players to watch this season are Leighton Fredericks and Egor Lukic. Before becoming a Clayton State Laker, Fredericks attended Westville High School in South Africa. He is the second student from Clayton State to earn the Peach Belt Conference "Freshman of the Year," award along with becoming the Peach Belt conference select and Division II All-Southeast region. His average for last season was one assist and 13 goals, helping the Lakers to 27 points.

Lukic is a defender is from Sabac, Serbia, and attended school at Mid-Continent University in Mayfield, Kentucky. While playing for Mid-Continent, Lukic was a two-starter on the defense and a NCAA All-American select last season. The Lakers are definitely looking forward to having Lukic on their team this year.

The guys have their work cut out for them this season. After a rough season last year, the guys will be doing their pre-season training in a unique way this year. The boys will be toughing it out in "Spartan" style in the mountains this year.

Coach Petersen said as he discussed what the team can do differently to improve their season this year. The ladies soccer team are expecting an exciting season this year. The women have welcomed eight new players onto their squad this season. The goal for Head Coach T.O. Totty was to reinforce the team by recruiting enough players to cover positions if needed.

This season, soccer fans should look out for returners Cherie Sayon, a sophomore forward from Monrovia, Liberia; Jennifer Dreasler, a junior midfielder and defender from Quincy, Illinois; Caitlin Clark, senior defender and midfielder from Martinez, Ga.; and team captain Natalia Valentine, a sophomore forward from Boksburg, South Africa.

Sayon is the only student from Clayton State University to be selected as first team All-PBC. Second in the PBC, she has scored 14 goals and 29 points. "I expect more from her this year" Coach Totty said

about Sayon.

The ladies have a solid team that is planning to improve this season from last season.

“There has definitely been some improvement, but I want the girls to do much better from last year,” Totty said. “We want to go to the conference championship and NCAA tournament.”

[The Bent Tree](#)

Clayton State University's student newspaper

- [About](#)
- [Staff](#)
- [Follow us on Twitter!](#)

- [Home](#)
- [Features](#)
- [Greek](#)
- [News](#)
- [Opinion»](#)
- [Photos & Videos](#)
- [Sports»](#)

You are here: [Home](#) / [Sports](#) / CSU Soccer Scrimmages

CSU Soccer Scrimmages

August 22, 2010 By benttrenews.org



Cross Country Teams Looking Good This Season

August 14, 2010 By benttreenews.org

The 2010 women's and men's cross country track teams are expecting an exciting season this year.

By Brittany Webb

Assignments Editor

bwebb@benttreenews.org

The 2010 women's and men's cross country track teams are expecting an exciting season this year. Both teams have made a few changes to their lineup, giving them a good mixture of experience. Head Coach Mike Mead leads both teams.

The women are making great headway as they plan to finish where they left off last season, hoping to bring home the Peach Belt Conference Title. They placed fourth in that championship last year.

Runners to watch this season are senior Chelsea Ellis from Port St. Lucie, Fla., and junior Kourtney Aylor of Burnet, Tex. Ellis came in third with the teams first All-Peach Belt Conference Championship, giving the ladies a fourth place finish overall. In 2008, she had three top-five finishes, all in a row. Ellis also received All-Region honors in the NCAA Division II South Regional meet. In that meet, she finished 10th, giving the team a ninth-place finish.

Assisting Ellis in earning the All-Peach Belt Conference third-place finish was Aylor. Aylor finished fifth in that meet, landing her in the top five overall. She previously ran for Midwestern State University. While there, she led her team to success in the Lone Star Conference, earning a title for the team. She also placed 15th in the NCAA championship meet held in Slippery Rock, Pa.

Three new runners will take their place alongside Aylor and Ellis this season: Samantha Walling, a freshman from Galt, Calif., Monique Belmudes, a fresman from Temecula, Calif., and Brandi Luongo, a junior from Jonesboro who is returning from the U.S. Naval Academy.

"The women will definitely be battling for a higher spot this year" said Mead, adding that the women's team hopes to have more front runners this season. "The women put in the most mileage as a team during summer training."

As for the men's team, they will be working hard to advance in regionals this year. Key runners on the guys cross country team are senior Jarrid Casimir and junior Fidelis Mutiso. Casimir, an Auburn, Ga., native, is a graduate of Dacula High School. In 2008, he set his career best time with a 28:25 as he ran the 5k at the Anderson Invitational, giving the Lakers the title.

Mutiso comes from Nairobi, Kenya, where he attended Jomo Kenyetta University. He was named the Peach Belt Conference co-"Runner of the Year," by winning the team its first All-Peach Belt Conference honors by finishing fourth and putting the team in second. Mutiso also earned the All-Region honors at the NCAA D-II Southeast Regional, beating the 10k time set by the team with a seventh-place finish. His overall best time is 32:22 running the 10K in the NCAA-D II Southeast Regional's.

This year's newest members are freshmen Russell Lawless of Richmond Hills, Ga., and Charles Anderson from Pittsburgh, Pa.

Ms. Candy: Meet the Lady Behind the Ladle

August 15, 2010 By benttreenews.org



Ms. Candy, who works in Lakeside Cafe in the University Center, wants students to feel right at home. "I love the students," she said. "They all know I'm here if they need someone to talk to." (Photo by Kevin Liles/The Bent Tree)

By Kevin Liles
Editor-in-Chief
kliles@benttreenews.org

Some call her Mama. Others call her Ms. Candy. Some just smile as they pass through her line. The one thing they all have in common? They walk away feeling a little better than when they came in Lakeside Cafe.

Her name is Candy Marie McDonald, and though her job is to serve CSU students whatever is on the menu, she considers it much more than that.

"I love the students," she said. "I love being able to talk to them. They all know I'm here if they need someone to talk to."

Ms. Candy has worked at Lakeside for the past two years. And ever since she started, everyone knew there was something special about her. "She's so wonderful," said 78-year-old Thelma Williams, who works in the kitchen at Lakeside Cafe. "She's such a joy to be around."

Ms. Candy is one of 23 children, all girls. Yes, 23 children. But Ms. Candy loved every minute of it. “It was a thrill to be at home,” she said. “I’ve had a cheerful life.”

And she plans to share that cheer with as many people as possible.

“Everytime I come in, she’s always saying, ‘Hey baby, how are you doing?’” said Matt Shellnutt, a CSU senior. “She’s really sweet.”

Because Ms. Candy’s father was in the Army, her family moved around a lot. She’s lived in many places, but most of her childhood was spent in New Orleans. She has been a Georgia resident for about 30 years.

Ms. Candy takes special care to remember many of her customers’ likes and dislikes, as well as their allergies. She makes each person feel important.

“Some of them can’t have certain foods and some of them just don’t like some things,” she said. “I’m like their mother. I make sure they get what they need ... and that they eat their vegetables.”

Ms. Candy works five days a week at Lakeside, and also volunteers her time with terminally ill patients. That work comes natural to her — she worked as a nurse’s assistant in hospice care for many years before coming to work in the food service industry.

“That’s all I’ve done my whole life,” she said, referring to caring for people. “A lot of people depend on me. I just ask Jesus to give me the strength to be here for them.

“I want them to wake up and think ‘Candy is coming today,’” she said of the patients she works with now.

As for her customers in Lakeside, she wants them to have the best. She carefully scoops out each serving as if she were preparing it for herself. Each plate is a small work of art for her.

She separates out the darker plates from the lighter ones because she says it’s more pleasing.

“The food just looks better when it’s on a lighter background,” she says.

Ms. Candy has no children of her own, but adopted six boys. Now, she has adopted an entire campus.

“These are my students,” she said.

Convocation: President Welcomes New Students

August 13, 2010 By benttreenews.org



*Clayton State held its fifth annual freshman Convocation on Friday to welcome all new students.
(Photos by Brian Roberts/The Bent Tree)*

By John Zinko
Managing Editor
jzinko@benttreenews.org

This year marks the fifth annual freshman convocation at Clayton State University. Convocation is designed to make the upcoming freshman class aware of the transition between high school and the freedom of college life.

The keynote speaker, Clayton State University President Dr. Tim Hynes, gave a lively presentation of the Top 10 Things to Do in College, touching on points like studying early and not partying during the week.

Dr. Brian Haynes, vice-president of Student Affairs, also spoke, mainly about what to expect at Clayton State. And Rico Lee, vice-president of CSU's Student Government Association, welcomed students to the beginning of their most memorable age.

Four monologues were given by upper classmen to help establish bearings for the upcoming feelings and obstacles new students would be facing in college. One of those was given by Brody McNeal who created the acronym "Fly, Rocking, Ensembles, Succeeding, Highly, Marvelously, Annihilating,

Negativity” spelling the word “FRESHMAN.”

The last part of the acronym “marvelously annihilating negativity” became the theme for the graduating class of 2014.

Filed Under: [News](#)

Move-in Day at Laker Hall

August 13, 2010 By [benttrenews.org](#)



On Aug. 12, new and returning residents moved into Laker Hall, the 451-bed, 178,000 square-foot dormitory at CSU. Students received help from Campus Life volunteers, as well as from members of the Greek community. (Photos by Brian Roberts/The Bent Tree)

Filed Under: [Photos & Videos](#)

Name a Swan — Only \$650

August 13, 2010 By [benttrenews.org](#)



Paul Bailey carries Elizabeth, one of two new swans that recently arrived at Clayton State. (Photos courtesy of Paul Bailey)

By John Zinko
Managing Editor
jzinko@benttrenews.org

Thanks to Paul Bailey, director of Clayton State's Media and Printing Services, Swan Lake has two new residents — Elizabeth and an unnamed swan that you have the opportunity to purchase the naming rights for.

Elizabeth Taylor of the School of Graduate Studies, has paid for one of the two new swans. As is traditionally the case in situations like this, Taylor receives the naming rights to her swan hence, "Elizabeth."

In early 1995, Dr. Barbara G. King, an assistant professor of Reading, donated two mute swans to Clayton State. They were named Scarlet and Rhett after characters from "Gone With the Wind."

Almost from the beginning, Bailey has been the swan's primary caregiver, having previously purchased several generations of swans by means of the special Swan Fund set up through the Clayton State University Foundation.

In 1997, Rhett and Scarlet built a nest near the president's office and mated, Bailey said, though the honeymoon was short-lived: Rhett was killed by a wild dog that had wondered on campus and threatened the nest.

"When I saw what happened to Rhett, it knocked the wind from me," Bailey said. "I was on the phone

the next day looking for another male swan. Scarlet was swimming in the lake, and when the new swan (arrived), they caught one another's attention and made a B-line (for one other) and when they met, their necks made a heart. You couldn't have scripted it better in a movie!"

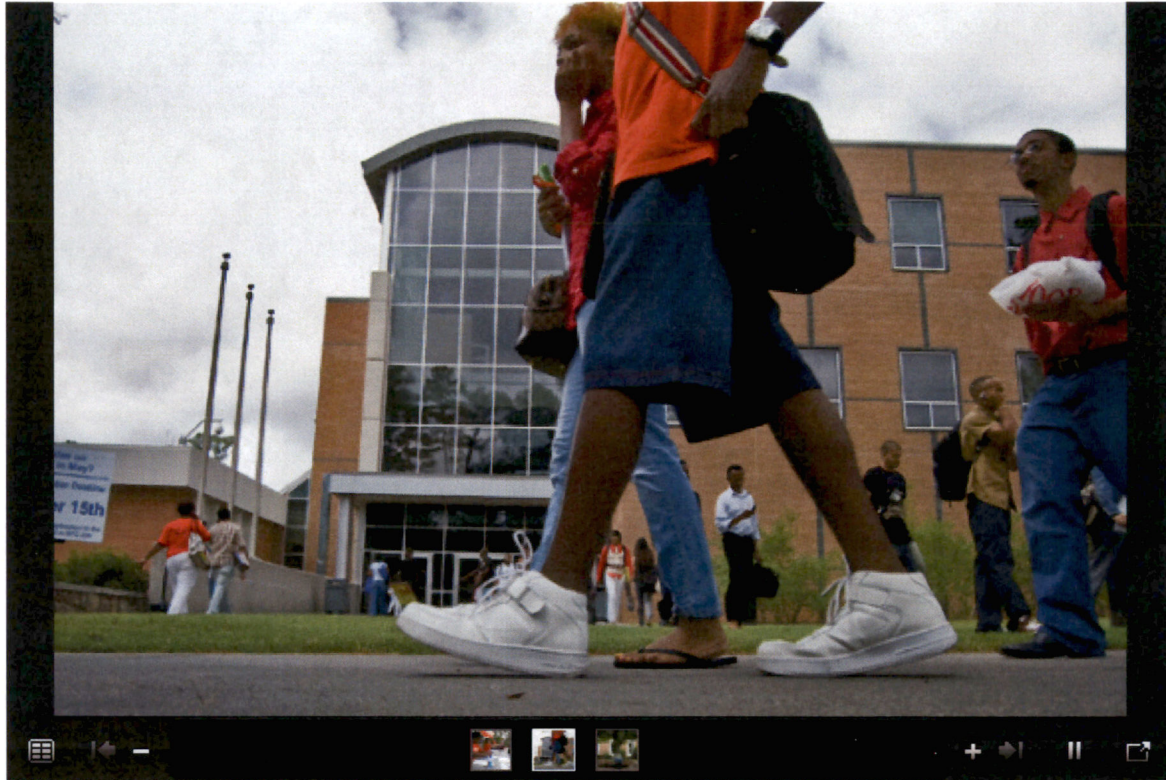
The new swan would be named Ashley. Both he and Scarlet would both die after ingesting a fisherman's lead sinker. Scarlet was replaced with another female swan, Melanie, who died soon after her arrival. Belle, another female swan, replaced Melanie. Belle, a Polish mute swan, still lives here at CSU.

Rhett II was acquired to replace Ashley in 2000. He lived on campus until June, when he was found dead, Bailey said. The cause of death is unknown. Bailey then contacted a breeder in Indiana and arranged for the purchase of two new female swans, who arrived on July 13.

The new swan will be named on a first come, first serve basis. Subsequent sponsors after the initial respondent will have the opportunity to name any future swans. If you would like to purchase the naming rights to the second swan, contact Bailey at 678-466-4380. The cost is \$650.

First Day Back

August 16, 2010 By benttrenews.org



As classes started for fall term Monday, CSU was full of activity. (Photos by Kevin Liles/The Bent Tree)

Studying Under the Sun

August 17, 2010 By benttreenews.org



Avery Crow, a home schooler who is dual-enrolled as a nursing major, studies Tuesday while soaking up some rays by Swan Lake. (Photo by John Zinko/The Bent Tree)

Perusing Posters

August 18, 2010 By benttrenews.org



Students look through posters for sale in the University Center Wednesday. Representatives from the store Beyond the Wall were selling posters, as well as other memorabilia. (Photo by Brian Roberts/The Bent Tree)

Student Involvement Fair

August 20, 2010 By benttreeneews.org



The Student Involvement Fair, held Thursday outside the Student Activities Center, allowed students the opportunity to learn more about organizations on campus (and get free SWAG). It also gave organizations a chance to explain their purpose and recruit new members. (Photo by Brian Roberts/The Bent Tree)

Greek Life: Letters and Colors

August 21, 2010 By benttreenews.org



Members of the Fraternity and Sorority Council speak during the “All I See Are Letters and Colors: What Does It All Mean?” event on Aug. 17 at Student Activities Center. Pictured, from right, are Mario Feliz, Robin Andrews, Christa Phillips, Didier Rieger, William Hagan, and Jasmie Chinnery. (Photo by Jamal El-Amin/The Bent Tree)

RESET Workshop

July 29, 2010 By benttreenews.org



Atawanna Royal, campus activities coordinator for the Department of Campus Life, leads an exercise among participants during Thursday's RESET workshop in the Student Activities Center. The workshop was held to inform student organizations on budgetary concerns, how to take advantage of on-campus services, as well as how to be effective leaders. (Photo by: Kevin Liles/The Bent Tree)

Filed Under: [Photos & Videos](#)

Studying

July 21, 2010 By benttreenews.org



Sean Lowe, a senior CMS major, studies Spanish in the coffee shop on campus. (Photo by Kevin Liles/The Bent Tree)

Filed Under: [Photos & Videos](#)